

## Big Boo

3



### Creature — Spirit

Flying, trample

Big Boo can't attack or block as long as an opponent controls an untapped creature.

1: Target creature attacks this turn if able.

5/5

095/360 U  
MAR • EN CROTDWAG ON DEVIANTART

By SethBling [Not For Sale]

## Angry Sun

1



### Creature — Elemental

Flying

Angry Sun attacks each combat if able.

*It was once commonly believed that the sun was thousands of miles wide and millions of miles away.*

2/2

158/360 U  
MAR • EN GARYSTORKAMP ON DEVIANTART

By SethBling [Not For Sale]

## Tuxie

\*



### Creature — Bird

: Another target creature gains lifelink until end of turn.

*"Egad! My baby!! Have you seen my baby???"*

—Mother Penguin

1/2

043/360 C  
MAR • EN LOLLERGATOR ON DEVIANTART

By SethBling [Not For Sale]

## Feather Power

\*



### Enchantment — Aura

Enchant creature

Enchanted creature gets +1/+1 and has flying.

*No feeling compares to the power in your step and the wind in your cape.*

008/360 C  
MAR • EN LEODIAMONDBLOG

By SethBling [Not For Sale]

## Rotate

2



### Instant

Simultaneously untap all tapped permanents and tap all untapped permanents.

Draw a card.

*It's a matter of perspective.*

084/360 U  
MAR • EN NINTENDO

By SethBling [Not For Sale]

## Flower Power

2



### Enchantment — Aura

Enchant creature

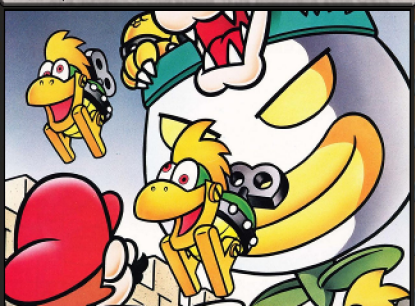
Enchanted creature has "2, : This creature deals 2 damage divided as you choose among one or two targets."

161/360 U  
MAR • EN WUZTAJYZA

By SethBling [Not For Sale]

## Koopa Clown Car

3



### Artifact — Vehicle

Flying

Whenever Koopa Clown Car attacks, you lose 2 life and create two tapped 1/1 black Minion creature tokens.

Crew 2 (Tap any number of creatures you control with total power 2 or greater: This Vehicle becomes an artifact creature until end of turn.)

2/3

117/360 U  
MAR • EN NINTENDO

By SethBling [Not For Sale]

## Lakitu

1



### Creature — Koopa Minion

Flying

At the beginning of your upkeep, you lose 1 life and create a 1/1 black Minion creature token.

*The princess's umbrella is far from a mere fashion accessory.*

1/1

118/360 R  
MAR • EN NESLUG ON DEVIANTART

By SethBling [Not For Sale]

## Kidnap

1



### Sorcery

Gain control of target creature until end of turn. Tap it.

*Bowser really ought to find a new occupation.*

166/360 U  
MAR • EN ESTIVADOR ON DEVIANTART

By SethBling [Not For Sale]



# Princess Rosalina

3\*\*



## Legendary Planeswalker — Rosalina

- +1** : Up to one target creature gains flying, vigilance, lifelink and indestructible until end of turn.
- 2** : Exile target creature until Princess Rosalina leaves the battlefield.
- 7** : You get an emblem with "Elementals you control have indestructible." Create seven 1/1 white Elemental creature tokens with flying.

5

024/360 M  
MAR • EN • SIRTIEFLING ON DEVIANART

By SethBling [Not For Sale]

# Blooper

2



## Creature — Squid

### Flash

When Blooper enters the battlefield, creatures your opponents control get -2/-0 until end of turn.

*"Stinkin' inkin's stopped my blinkin'!"*  
—Wario the Sightless

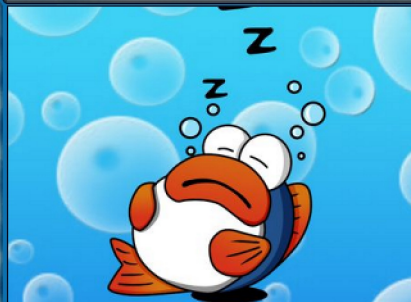
2/2

048/360 U  
MAR • EN • NEOCYANIA ON DEVIANART

By SethBling [Not For Sale]

# Rip Van Fish

1



## Creature — Fish

Rip Van Fish enters the battlefield tapped and doesn't untap during your untap step.

Whenever an opponent casts a spell, untap Rip Van Fish.

*The sleeper must awaken.*

2/2

082/360 U  
MAR • EN • ATMA94 ON DEVIANART

By SethBling [Not For Sale]

# Dr. Mario

3\*\*



## Legendary Creature — Human Cleric

At the beginning of your upkeep, you may exile three cards that share a color from a single graveyard. When you do, destroy target creature or enchantment.

Super (When this creature dies, if it was enchanted, return it to the battlefield under its owner's control.)

5/5

005/360 R  
MAR • EN • EARTHB-KUN ON DEVIANART

By SethBling [Not For Sale]

# Tanooki Suit

1\*



## Enchantment — Aura

### Enchant creature

Enchanted creature gets +1/+1 and has flying.

Enchanted creature has "2: This creature gains indestructible until end of turn. Tap it and remove it from combat."

037/360 C  
MAR • EN • NINTENDO POWER

By SethBling [Not For Sale]

# Hammer Suit

3



## Enchantment — Aura

### Enchant creature

Whenever enchanted creature attacks, it deals 2 damage to any target.

*No one knows who threw the first hammer, but I intend to throw the last.*

163/360 U  
MAR • EN • MRMIREZ ON DEVIANART

By SethBling [Not For Sale]

# Dry Bones

1



## Creature — Skeleton Minion

At the beginning of your upkeep, you may pay 2 life. If you do, return Dry Bones from your graveyard to your hand.

*These bones don't know the meaning of the word "quit." Or any other words.*

2/1

107/360 U  
MAR • EN • RIBERA ON DEVIANART

By SethBling [Not For Sale]

# Dry Bowser

3



## Legendary Creature — Skeleton Koopa

1 : Dry Bowser gets +2/+0 until end of turn.

At the beginning of your upkeep, you may pay 2 life. If you do, return Dry Bowser from your graveyard to your hand.

4/2

108/360 U  
MAR • EN • COKSH ON DEVIANART

By SethBling [Not For Sale]

# Undodog

3



## Creature — Dog Wizard

When Undodog enters the battlefield, return target instant or sorcery card from your graveyard to your hand.

*There's no mistake so big it can't be undone by Undodog!*

1/3

091/360 U  
MAR • EN • KITTYNINIAFISH ON DEVIANART

By SethBling [Not For Sale]



# Boohemoth

3



## Creature — Spirit

Indestructible

Boohemoth attacks each combat if able.

Boohemoth gets -1/-0 for each untapped creature an opponent controls.

5/5

101/360 U  
MAR • EN • HOOKSNFANGS

By SethBling [Not For Sale]

# POW Block

1



## Sorcery

POW Block deals 2 damage to each creature without flying.

*"Flips shell enemies and inflicts 2 damage points on all enemies."*  
—Paper Mario

173/360 U  
MAR • EN • NINTENDO

By SethBling [Not For Sale]

# Counterspook

1



## Instant

Counter target spell.

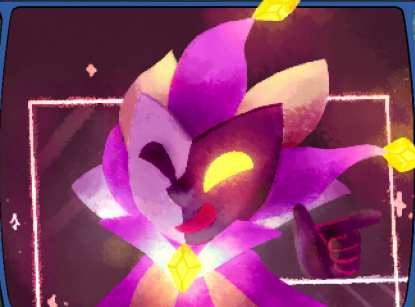
Spook 1 (You may cast this card face down as a 2/2 creature for 3. When it dies while face-down, exile it. You may cast it later from exile for its spook cost.)

056/360 C  
MAR • EN • TURASSICAZAR ON DEVIANART

By SethBling [Not For Sale]

# Dimentio, Charming Magician

3



## Legendary Planeswalker — Dimentio

- +1** : Tap target permanent, then untap another target permanent.
- 4** : Gain control of target creature with toughness less than or equal to the number of cards in your hand.
- 7** : For each creature on the battlefield, you create a token that's a copy of that creature.

4

058/360 M  
MAR • EN • FINAMUSICA ON DEVIANART

By SethBling [Not For Sale]

# Chargin' Chuck

2



## Creature — Koopa Minion

3 Hits (This creature enters the battlefield with three +1/+1 counters on it. If damage would be dealt to it while it has a +1/+1 counter on it, remove one instead.)

Chargin' Chuck attacks each combat if able.

0/0

150/360 C  
MAR • EN • THAT-ONE-GUY-AGAIN ON DEVIANART

By SethBling [Not For Sale]

# Bonus Game



## Sorcery

For each card type, if you control at least three permanents of that type, draw a card.

*"It's just like tic-tac-toe!"*  
—Super Mario World manual

050/360 C  
MAR • EN • NINTENDO

By SethBling [Not For Sale]

# Cappy

2



## Legendary Artifact — Equipment

Equipped creature has "2, , , Unattach Cappy: Gain control of target creature until end of turn. Untap that creature. It gains haste until end of turn. Activate only as a sorcery."

Equip 2

148/360 R  
MAR • EN • LC-HOLY ON DEVIANART

By SethBling [Not For Sale]

# Kamek, Arch-Magikoopa

3



## Legendary Creature — Koopa Wizard

Flying

When Kamek enters the battlefield, destroy up to one target nonland permanent. Its controller mills cards until they mill a nonland permanent card, then puts it onto the battlefield.

4/3

071/360 R  
MAR • EN • GEOPYROLOHAI ON DEVIANART

By SethBling [Not For Sale]

# Thwimp

2



## Artifact Creature — Golem Minion

Defender, indestructible

*"Thwimps and Thwomps;  
Whimps and Whomps;  
Grindels and Spindels and Grrrols"*  
—Song of Invincible Crushers

1/1

039/360 U  
MAR • EN • AARON CLARK

By SethBling [Not For Sale]



## Troll Level



(As this Saga enters and after your draw step, add a lore counter. Sacrifice after IV.)

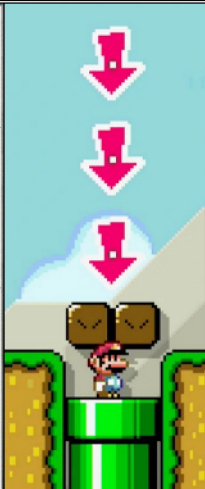
Exile target creature until Troll Level leaves the battlefield.

I

II

III

IV



Enchantment — Saga

040/360 C  
MAR • EN NINTENDO

By SethBling [Not For Sale]

## Donkey Kong



Legendary Creature — Ape Berserker

2, Sacrifice an artifact or Minion: Donkey Kong deals 2 damage to any target.

Spawn (1, Exile this card from your hand: Create a 1/1 black Minion creature token. You may cast this card later from exile. Spawn only as a sorcery.)

3/1

156/360 R  
MAR • EN SEBASTIANVONBUCHWALD ON DA

By SethBling [Not For Sale]

## Boo Buddies



Creature — Spirit

♠: Turn Boo Buddies face down.

Spook (You may cast this card face down as a 2/2 creature for 3. When this creature dies while face-down, exile it. You may cast it later from exile for its spook cost.)

2/1

100/360 U  
MAR • EN NINTENDO

By SethBling [Not For Sale]

## Ghost Ride



Artifact — Vehicle

When Ghost Ride enters the battlefield, put a card from your hand or the top card of your library onto the battlefield face down. (It's a 2/2 creature)

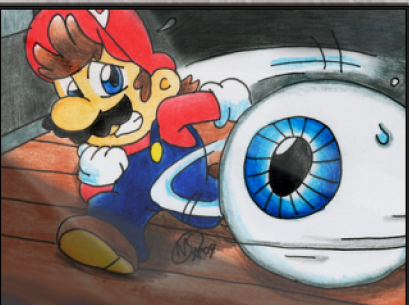
Crew 2 (Tap any number of creatures you control with total power 2 or greater: This Vehicle becomes an artifact creature until end of turn.)

3/3

112/360 C  
MAR • EN NINTENDO

By SethBling [Not For Sale]

## Mr. I



Creature — Eye

Whenever Mr. I becomes tapped, scry 1.

I just wants some perspective.

2/2

122/360 C  
MAR • EN NATSILVA ON DEVIANTART

By SethBling [Not For Sale]

## Backwards Long Jump



(As this Saga enters and after your draw step, add a lore counter. Sacrifice after III.)

Enchant creature

I

Enchanted creature doesn't untap during its controller's next untap step.

II

Enchanted creature gains flying until end of turn.

III

Enchanted creature can't be blocked this turn. Whenever it deals damage to an opponent this turn, draw three cards.

Enchantment — Aura Saga

046/360 U  
MAR • EN NINTENDO

By SethBling [Not For Sale]

## F.L.U.D.D.



Enchantment — Aura

Enchant creature

♠: Enchanted creature gains flying until end of turn.

Whenever enchanted creature attacks, you may pay 3. When you do, return target nonland permanent with mana value X to its owner's hand.

061/360 U  
MAR • EN HAPPYDOODLE ON DEVIANTART

By SethBling [Not For Sale]

## Right Behind You



Instant

Look at the top five cards of your library. Put one of them onto the battlefield face down, and the rest on the bottom of your library in a random order. (It's a 2/2 creature.)

"Aren't boos just the worst?!"

081/360 C  
MAR • EN BIDDOFGOO ON DEVIANTART

By SethBling [Not For Sale]

## Ghost Story



Sorcery

As an additional cost to cast this spell, sacrifice a creature.

Search your library for a card, put it onto the battlefield face down, then shuffle. (It's a 2/2 creature.)

113/360 R  
MAR • EN TOASTDOODS ON TUMBLR

By SethBling [Not For Sale]



# Moo Moo

2



## Creature — Ox

Protection from Vehicles (*This creature can't be blocked, targeted, or dealt damage by Vehicles. It can still crew Vehicles.*)

*Don't be fooled by their placid smiles. We've lost too many good drivers to their kind.*

3/3

017/360 C  
MAR • EN NINTENDO

By SethBling [Not For Sale]

# Rex

2



## Creature — Dinosaur Minion

2 Hits (*This creature enters the battlefield with two +1/+1 counters on it. If damage would be dealt to it while it has a +1/+1 counter on it, remove one instead.*)

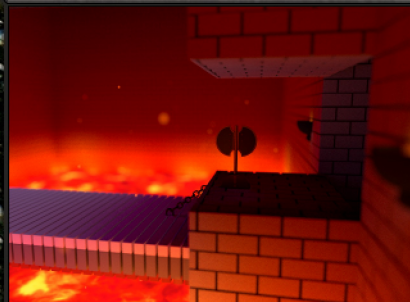
2/0

177/360 C  
MAR • EN TOP\_DOG ON FURAFFINITY.NET

By SethBling [Not For Sale]

# Precarious Footing

1



## Enchantment — Aura Curse

Enchant player

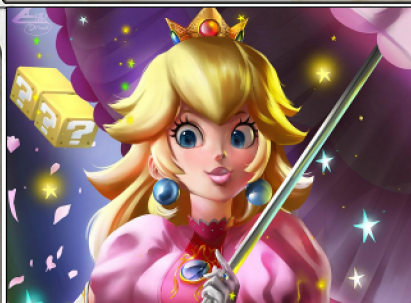
Whenever a creature you control deals damage to enchanted player, sacrifice Precarious Footing. When you do, destroy target creature without flying that player controls.

126/360 U  
MAR • EN LANCEBERYL ON DEVIANTART

By SethBling [Not For Sale]

# Princess Peach

1



## Legendary Creature — Human Noble

As long as Princess Peach is enchanted, she gets +1/+1 and has lifelink.

Super (*When this creature dies, if it was enchanted, return it to the battlefield under its owner's control.*)

1/1

023/360 U  
MAR • EN IZHARDRAWS ON DEVIANTART

By SethBling [Not For Sale]

# Magma Spray

2



## Instant

Magma Spray deals 2 damage to target creature. If that creature would die this turn, exile it instead.

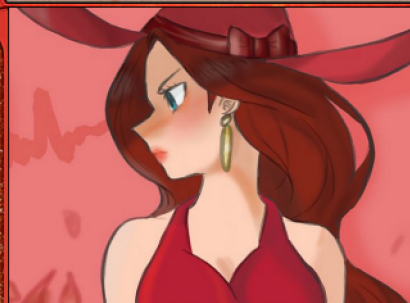
*Mario's one true weakness: lava.*

170/360 C  
MAR • EN SOLMATTER ON DEVIANTART

By SethBling [Not For Sale]

# Mayor Pauline

2



## Legendary Creature — Human Noble

As long as Mayor Pauline is enchanted, she gets +1/+1 and has menace.

Super (*When this creature dies, if it was enchanted, return it to the battlefield under its owner's control.*)

1/1

171/360 U  
MAR • EN SILVERNA ON DEVIANTART

By SethBling [Not For Sale]

# Pipe Frame

2



## Artifact — Vehicle

Whenever Pipe Frame attacks or blocks, other Vehicles you control get +2/+2 until end of turn.

Crew 1 (*Tap any number of creatures you control with total power 1 or greater: This Vehicle becomes an artifact creature until end of turn.*)

3/4

020/360 U  
MAR • EN CASSIO YOSHIYAKI SHIBUKAWA

By SethBling [Not For Sale]

# Boo Pipes

1



## Artifact — Vehicle

Whenever Boo Pipes deals combat damage to a player, exile target permanent you control, then return it to the battlefield under its owner's control.

Crew 2 (*Tap any number of creatures you control with total power 2 or greater: This Vehicle becomes an artifact creature until end of turn.*)

2/5

051/360 U  
MAR • EN NINTENDO

By SethBling [Not For Sale]

# Return Volley

1



## Instant

Return target spell to its owner's hand.

Draw a card.

*"Try-a gain!"*

080/360 U  
MAR • EN HRRRRRRRRR ON DEVIANTART

By SethBling [Not For Sale]



# Baby Form

1



## Enchantment — Aura

Enchant face-up creature

Enchanted creature loses all abilities and has base power and toughness 1/1.

045/360 C  
MAR • EN PALEONA ON DEVIANART

By SethBling [Not For Sale]

# Three Balloons

3



## Enchantment — Aura

Enchant creature or Vehicle

When Three Balloons enters the battlefield, put three +1/+1 counters on enchanted permanent.

Enchanted permanent has extra hits. (If damage would be dealt to it while it has a +1/+1 counter on it, remove one instead.)

038/360 U  
MAR • EN NINTENDO

By SethBling [Not For Sale]

# Captain Toad, Treasure Tracker

3



## Legendary Creature — Fungus Scout

When Captain Toad enters the battlefield, if you cast him, choose one —

- Create a Treasure token.
- Return target Aura card from your graveyard to your hand.

Super (When this creature dies, if it was enchanted, return it to the battlefield under its owner's control.)

3/3

003/360 U  
MAR • EN AZONIS ON DEVIANART

By SethBling [Not For Sale]

# Slammer

1



## Creature — Spirit

Whenever you cast this spell from exile or you cast another spell from exile, Slammer deals 2 damage to target opponent.

Spook 1 (You may cast this card face down as a 2/2 creature for 3. When this creature dies while face-down, exile it. You may cast it later from exile for its spook cost.)

2/1

179/360 U  
MAR • EN JAMESMANTHEREGOLD ON DA

By SethBling [Not For Sale]

# Spirited Away

1



## Sorcery

Destroy target non-Spirit creature.

Spook 1 (You may cast this card face down as a 2/2 creature for 3. When it dies while face-down, exile it. You may cast it later from exile for its spook cost.)

132/360 C  
MAR • EN SPICYAVOGATO ON DEVIANART

By SethBling [Not For Sale]

# Should've Stayed Home

1



## Instant

Destroy up to two target creatures that were dealt damage this turn.

Spook (You may cast this card face down as a 2/2 creature for 3. When it dies while face-down, exile it. You may cast it later from exile for its spook cost.)

130/360 U  
MAR • EN NINTENDO

By SethBling [Not For Sale]

# Shy Boo

1



## Creature — Spirit

Flying

Shy Boo can't attack as long as an opponent controls an untapped creature.

Spook (You may cast this card face down as a 2/2 creature for 3. When this creature dies while face-down, exile it. You may cast it later from exile for its spook cost.)

2/1

087/360 C  
MAR • EN FIRGOF ON DERPIBOORU

By SethBling [Not For Sale]

# Vanish Cap

1



## Enchantment — Aura

Enchant creature

Enchanted creature has shroud and can't be blocked or deal damage.

1 : Return Vanish Cap to its owner's hand.

092/360 C  
MAR • EN NINTENDO

By SethBling [Not For Sale]

# Gobblegut

3



## Creature — Dragon

Flying

When Gobblegut enters the battlefield, you may sacrifice a land. When you do, Gobblegut fights another target creature.

3/3

162/360 U  
MAR • EN NINTENDO

By SethBling [Not For Sale]



# King Kaliente

4



Legendary Creature — Octopus Noble

1 ♣, Sacrifice another creature: King Kaliente deals 2 damage to target player or planeswalker.

Spawn (1, Exile this card from your hand: Create a 1/1 black Minion creature token. You may cast this card later from exile. Spawn only as a sorcery.)

2/6

167/360 R MAR • EN SHOGUCHIME ON DEVIANART

By SethBling [Not For Sale]

# Rocky Wrench

1



Creature — Mole Minion

First strike

If you can dodge a wrench, you can dodge a fireball.

2/1

178/360 C MAR • EN DIC ENTERTAINMENT CORPORATION By SethBling [Not For Sale]

# Matching Game

2



Enchantment

When Matching Game enters the battlefield, exile the top six cards of your library face down.

At the beginning of your upkeep, look at a card exiled with Matching Game, then look at another. If the two cards are both colorless or share a color, you may reveal them and put them into your hand.

077/360 R MAR • EN NINTENDO

By SethBling [Not For Sale]

# Blue Yoshi

2



Enchantment Creature — Dinosaur

Bestow 4 ♠ (If you cast this card for its bestow cost, it's an Aura spell with enchant creature. It becomes a creature again if it's not attached to a creature.)

Flying

Enchanted creature gets +2/+2 and has flying.

2/2

049/360 C MAR • EN Z-GRAVES ON DEVIANART

By SethBling [Not For Sale]

# White Yoshi

2



Enchantment Creature — Dinosaur

Bestow 4 ♠ (If you cast this card for its bestow cost, it's an Aura spell with enchant creature. It becomes a creature again if it's not attached to a creature.)

First strike

Enchanted creature gets +2/+2 and has first strike.

2/2

044/360 C MAR • EN THOMAKAZE ON GAMEBANANA

By SethBling [Not For Sale]

# Red Yoshi

2



Enchantment Creature — Dinosaur

Bestow 4 ♠ (If you cast this card for its bestow cost, it's an Aura spell with enchant creature. It becomes a creature again if it's not attached to a creature.)

1 ♣: Red Yoshi gets +2/+0 until end of turn. If it's an Aura, enchanted creature gets +2/+0 until end of turn instead.

Enchanted creature gets +2/+2.

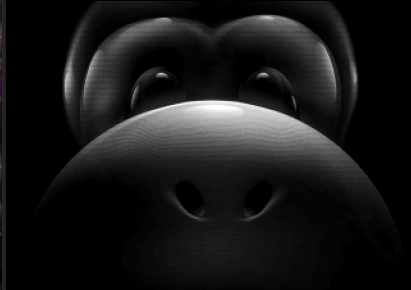
2/2

176/360 C MAR • EN PARIAXEXILEWRATH ON DEVIANART

By SethBling [Not For Sale]

# Black Yoshi

2



Enchantment Creature — Dinosaur

Bestow 4 ♠ (If you cast this card for its bestow cost, it's an Aura spell with enchant creature. It becomes a creature again if it's not attached to a creature.)

♣, Sacrifice a creature: Black Yoshi gets +2/+2 until end of turn. If it's an Aura, enchanted creature gets +2/+2 until end of turn instead.

Enchanted creature gets +2/+2.

2/2

096/360 C MAR • EN PHILIPPE VALLET

By SethBling [Not For Sale]

# Hammer Time

1



Instant

Until end of turn, target creature gets +3/+0 and gains trample and "Whenever this creature deals combat damage to a player, destroy target artifact that player controls."

If all you have is a hammer, there isn't a problem you can't smash!

164/360 C MAR • EN @SAMFILSTRUP

By SethBling [Not For Sale]

# Fling

1



Instant

As an additional cost to cast this spell, sacrifice a creature.

Fling deals damage equal to the sacrificed creature's power to any target.

160/360 C MAR • EN IOEADOK ON DEVIANART

By SethBling [Not For Sale]



## Search the Grounds

1



### Enchantment

At the beginning of your upkeep, scry 1.

*As Luigi crept down each corridor, he couldn't decide which he would be more horrified to find around the next corner: a swarm of greedy and ghoulish ghosts, or the missing brother who had overshadowed him for his entire life.*

085/360 C  
MAR • EN • BUTTERFLYTETO ON DEVIANART

By SethBling [Not For Sale]

## Boomerang Bro

2



### Creature — Koopa Minion

First strike

Whenever Boomerang Bro becomes untapped, it deals 1 damage to target opponent.

*At least a hammer only hits you once.*

1/1

146/360 C  
MAR • EN • NINTENDO

By SethBling [Not For Sale]

## Kamek's Broomstick

1



### Artifact — Vehicle

Flying

Whenever you cast an instant or sorcery spell, you may have Kamek's Broomstick become an artifact creature until end of turn.

Crew 2 (Tap any number of creatures you control with total power 2 or greater: This Vehicle becomes an artifact creature until end of turn.)

3/3

072/360 C  
MAR • EN • TAYCONOWO ON DEVIANART

By SethBling [Not For Sale]

## Fire Bar Roast

2



### Enchantment

At the beginning of each player's upkeep, Fire Bar Roast deals 2 damage to that player.

*Round and round it goes!*

158/360 U  
MAR • EN • LOUVI ON DEVIANART

By SethBling [Not For Sale]

## Spiny

2



### Creature — Koopa Minion

Whenever a creature deals damage to Spiny, Spiny deals that much damage to that creature's controller.

*Through years and years of evolution, nature has produced the absolute pinnacle of things-not-to-step-on.*

1/2

180/360 C  
MAR • EN • MORTALSHINOBI ON DEVIANART

By SethBling [Not For Sale]

## Red Koopa

1



### Creature — Koopa Minion

As long as you control another Minion, Red Koopa gets +1/+0 and has haste.

*Known capabilities:*

- Walking in one direction.
- Walking in the other direction.

2/2

175/360 C  
MAR • EN • NINTENDO

By SethBling [Not For Sale]

## Item Box

1



### Sorcery

Look at the top two cards of your library. Put one of them into your hand and the rest on the bottom of your library in a random order.

If you're in pursuit, look at the top four cards of your library instead of two. (You're in pursuit if an opponent controls more creatures than you.)

070/360 C  
MAR • EN • NINTENDO

By SethBling [Not For Sale]

## Fake Item Box

1



### Sorcery

Target player reveals their hand. You choose two nonland cards from among them. That player discards one of the chosen cards.

If you're in pursuit, you choose one card from among them instead of two. (You're in pursuit if an opponent controls more creatures than you.)

110/360 U  
MAR • EN • NINTENDO

By SethBling [Not For Sale]

## Mouser

1



### Creature — Mouse Minion

2, Sacrifice another permanent: Mouser deals 2 damage to each player.

2, : Create a Treasure token. (It's an artifact with "C", Sacrifice this artifact: Add one mana of any color.)

1/1

121/360 U  
MAR • EN • THEMROCK ON DEVIANART

By SethBling [Not For Sale]



# Ulcerate

1



## Instant

Target creature gets -3/-3 until end of turn. You lose 3 life.

*"Becoming giant and looming over your foes is pretty great, yeah? Well, that won't happen if you get this mushroom." —Super Smash Bros.*

137/360 C  
MAR • EN • MIMILUBUG ON DEVIANART

By SethBling [Not For Sale]

# Soft Lock

2



## Enchantment — Aura

Flash

Enchant creature or Vehicle

Enchanted creature can't attack or block.

032/360 C  
MAR • EN • NINTENDO

By SethBling [Not For Sale]

# Banzai Bill

1



## Artifact Creature — Construct Minion

Trample, haste

At the beginning of the end step, sacrifice Banzai Bill.

*Built single-use for a single purpose.*

4/4

140/360 C  
MAR • EN • WARITSALA ON DEVIANART

By SethBling [Not For Sale]

# Death Stare

2



## Sorcery

Target player discards two cards.

If you're in pursuit, that player sacrifices a nontoken creature.  
(You're in pursuit if an opponent controls more creatures than you.)

106/360 C  
MAR • EN • THEBOURGYMAN ON DEVIANART

By SethBling [Not For Sale]

# Para-Wing

1



## Artifact — Vehicle

\*: Para-Wing gains flying until end of turn.

Crew 1 (Tap any number of creatures you control with total power 1 or greater: This Vehicle becomes an artifact creature until end of turn.)

2/3

078/360 C  
MAR • EN • ZOMBIJ ON DEVIANART

By SethBling [Not For Sale]

# Trophy Ceremony

3



## Sorcery

Three target creatures and/or Vehicles each gain lifelink until end of turn. Choose a different mode for each target.

- It also gets +1/+1 until end of turn.
- It also gets +2/+2 until end of turn.
- It also gets +3/+3 until end of turn.

041/360 U  
MAR • EN • WARELANDER ON WARIOFORUMS

By SethBling [Not For Sale]

# Drift

1



## Enchantment — Aura

Enchant creature or Vehicle

Whenever enchanted creature attacks, put a +1/+1 counter on it.

When enchanted creature is dealt damage, sacrifice Drift.

006/360 C  
MAR • EN • INKHANA ON DEVIANART

By SethBling [Not For Sale]

# Earth-Shattering Stomp

1



## Sorcery

Destroy target creature.

Sacrifice a land unless you pay 3.

*If there's one thing Bowser loves more than his own castle, it's the feeling of squished plumbers under his feet.*

109/360 U  
MAR • EN • TEASELBONE ON DEVIANART

By SethBling [Not For Sale]

# So Long

1



## Instant

Destroy target blocking or blocked creature.

*"Thank you so much-a for to playing my game!"*  
—Mario

031/360 C  
MAR • EN • KNIGHT-MJ ON DEVIANART

By SethBling [Not For Sale]



## Bounding Dolphins



Creature — Dolphin



\*, : Target attacking creature gains flying until end of turn.

*Why swim with the dolphins when you can fly with them?*

1/3

052/360 C  
MAR • EN • TENBE ON DEVIANART

By SethBling [Not For Sale]

## Poochy



Creature — Dog



Sacrifice Poochy: Another target creature you control gains indestructible until end of turn.

*A dino's best friend.*

2/3

022/360 C  
MAR • EN • NEOCYANIA ON DEVIANART

By SethBling [Not For Sale]

## Lunge Fish



Creature — Fish



Flash

*One fish,  
Two fish,  
Red fish,  
You squish.*

3/4

075/360 C  
MAR • EN • ZOOKIEDRAGON ON DEVIANART

By SethBling [Not For Sale]

## Surprise Party



Instant



Target creature gets -3/-3 until end of turn.

Spook (You may cast this card face down as a 2/2 creature for 3. When it dies while face-down, exile it. You may cast it later from exile for its spook cost.)

134/360 C  
MAR • EN • SIGA4BDN ON DEVIANART

By SethBling [Not For Sale]

## Atop the Battlements



Enchantment



Whenever a blocking creature dies, it deals 3 damage to its controller.

*When Bowser gives you minions, you make minionade.*

139/360 U  
MAR • EN • TUSTINDEROSA ON DEVIANART

By SethBling [Not For Sale]

## Polterpup



Creature — Dog Spirit



When Polterpup enters the battlefield, exile target artifact until Polterpup leaves the battlefield.

Spook (You may cast this card face down as a 2/2 creature for 3. When this creature dies while face-down, exile it. You may cast it later from exile for its spook cost.)

2/1

172/360 C  
MAR • EN • RED-FLARE ON DEVIANART

By SethBling [Not For Sale]

## Finish Line



Enchantment



Whenever a Vehicle you control deals combat damage to a player, you may draw a card.

*Each crossing brings us both one lap closer to glory and one lap closer to defeat.*

062/360 U  
MAR • EN • NINTENDO

By SethBling [Not For Sale]

## Roulette Block



Sorcery



Choose artifact or enchantment. Scry 4, then reveal the top card of your library. If it's a card of the chosen type, put it into your hand.

*Although at first its contents appear completely random, with enough study, it can be manipulated to your favor.*

025/360 C  
MAR • EN • NINTENDO

By SethBling [Not For Sale]

## Peek-a-Boo



Instant



Exile target creature. Its owner casts it without paying its mana cost if able.

*Shouldn't have looked away.*

079/360 U  
MAR • EN • TEKKI ON ZEROCHAN

By SethBling [Not For Sale]



## Collateral Damage

2



### Instant

As an additional cost to cast this spell, sacrifice a creature.

Collateral Damage deals 3 damage to any target.

*Ah, trusty fire. Always gets the job done, no matter who's standing in the way!*

151/360 C  
MAR • EN NINTENDO

By SethBling [Not For Sale]

## Magma Jet

1 2



### Instant

Magma Jet deals 2 damage to any target.

Scry 2.

*A plumber's greatest folly is to believe that he controls the pipes.*

169/360 C  
MAR • EN SERPERIORRULER101 ON DEVIANART

By SethBling [Not For Sale]

## Blaze

X 2



### Sorcery

Blaze deals X damage to any target.

*"Mario! You again! Well that's just fine—I've been looking for something to fry with my fire breath!"*  
—Bowser, King Koopa

142/360 C  
MAR • EN NINTENDO

By SethBling [Not For Sale]

## Lemmy Koopa

2



### Legendary Creature — Koopa

As long as it's your turn, Minions you control have deathtouch.

Spawn (1, Exile this card from your hand: Create a 1/1 black Minion creature token. You may cast this card later from exile. Spawn only as a sorcery.)

2/3

119/360 U  
MAR • EN ARASHI-H ON DEVIANART

By SethBling [Not For Sale]

## Ludwig von Koopa

3 2



### Legendary Creature — Koopa

All creatures attack each combat if able.

Spawn (1, Exile this card from your hand: Create a 1/1 black Minion creature token. You may cast this card later from exile. Spawn only as a sorcery.)

3/3

168/360 R  
MAR • EN MRNERDLING ON DEVIANART

By SethBling [Not For Sale]

## Hoverkart

2



### Artifact — Vehicle

Hoverkart can't be blocked by artifact creatures.

Crew 3 (Tap any number of creatures you control with total power 3 or greater: This Vehicle becomes an artifact creature until end of turn.)

5/5

012/360 C  
MAR • EN CHINCHONGCHA ON DEVIANART

By SethBling [Not For Sale]

## Master Cycle

2



### Artifact — Vehicle

As long as it's your turn, Master Cycle has first strike.

Crew 1 (Tap any number of creatures you control with total power 1 or greater: This Vehicle becomes an artifact creature until end of turn.)

3/1

015/360 C  
MAR • EN SHAMSERG ON DEVIANART

By SethBling [Not For Sale]

## Koopa Airship

4



### Artifact — Vehicle

Flying, trample

At the beginning of your upkeep, up to one target creature gets -3/-3 until end of turn.

Crew 5 (Tap any number of creatures you control with total power 5 or greater: This Vehicle becomes an artifact creature until end of turn.)

7/10

116/360 R  
MAR • EN VIKING011 ON DEVIANART

By SethBling [Not For Sale]

## Diddy Kong

1 2



### Legendary Creature — Monkey Warrior

As long as it's your turn, Diddy Kong has first strike.

Super (When this creature dies, if it was enchanted, return it to the battlefield under its owner's control.)

2/2

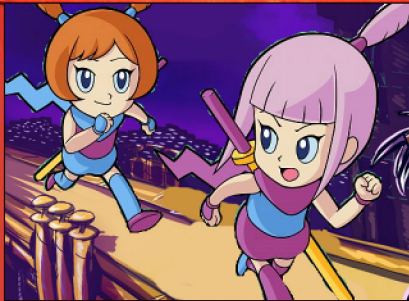
155/360 U  
MAR • EN FABIANLEONARDO ON DEVIANART

By SethBling [Not For Sale]



# Kat and Ana

2



Legendary Creature — Human Ninja

As long as Kat and Ana is attacking, you may cast Aura spells as though they had flash.

Super (When this creature dies, if it was enchanted, return it to the battlefield under its owner's control.)

3/3

165/360 U  
MAR • EN • RUENSON ON DEVIANART

By SethBling [Not For Sale]

# Big Bertha

4



Creature — Fish

Publish (If there are four or more card types among permanents you control, you're a maker for the rest of the game.)

1: Create a 1/1 blue Fish creature token. Activate only if you're a maker.

5/5

047/360 U  
MAR • EN • NINTENDO

By SethBling [Not For Sale]

# Invisible Block

1



Artifact

Flash

Publish (If there are four or more card types among permanents you control, you're a maker for the rest of the game.)

1, : Up to one target attacking creature doesn't untap during its controller's next untap step. If you're a maker, scry 1.

069/360 U  
MAR • EN • THEBOURGYMAN ON DEVIANART

By SethBling [Not For Sale]

# Mr. Eraser

\*



Artifact Creature — Construct

Publish (If there are four or more card types among permanents you control, you're a maker for the rest of the game.)

When Mr. Eraser dies, if you're a maker, choose one —

- Exile target enchantment.
- You gain 4 life.

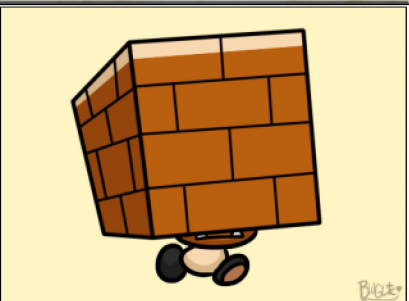
2/1

018/360 U  
MAR • EN • NINTENDO

By SethBling [Not For Sale]

# Pile Driver Micro-Goomba

1 \*



Artifact Creature — Fungus Wall Minion

Publish (If there are four or more card types among permanents you control, you're a maker for the rest of the game.)

As long as you're a maker, Pile Driver Micro-Goomba gets +3/+0 and has first strike.

0/2

019/360 C  
MAR • EN • @BWGLITE

By SethBling [Not For Sale]

# Rising Water

3



Enchantment

Publish (If there are four or more card types among permanents you control, you're a maker for the rest of the game.)

When Rising Water enters the battlefield, create three 1/1 blue Fish creature tokens.

As long as you're a maker, creatures you control can't be blocked by creatures with greater power.

083/360 U  
MAR • EN • AIKEN GARCIA

By SethBling [Not For Sale]

# Scare-a-thon

4



Sorcery

All creatures get -4/-4 until end of turn.

Spook 3 (You may cast this card face down as a 2/2 creature for 3. When it dies while face-down, exile it. You may cast it later from exile for its spook cost.)

129/360 R  
MAR • EN • POKEDSTUDIO ON DEVIANART

By SethBling [Not For Sale]

# Showdown

2 \*



Sorcery

Each player chooses a creature they control. Destroy the rest.

The moment you kidnapped the princess, this was inevitable.

029/360 R  
MAR • EN • LALILULELO2003 ON DEVIANART

By SethBling [Not For Sale]

# Firebrand

2



Enchantment — Aura

Enchant creature

When Firebrand enters the battlefield, it deals 2 damage to any target.

Enchanted creature gets +2/+0.

159/360 C  
MAR • EN • THELOMBX51

By SethBling [Not For Sale]



## Start Over

3



### Sorcery

Choose one or more —

- Return all artifacts to their owners' hands.
- Return all creatures to their owners' hands.
- Return all enchantments to their owners' hands.

*The reset rocket:  
Begin again at your task,  
complete the level.*

089/360 R  
MAR • EN NINTENDO

By SethBling [Not For Sale]

## Pit Crew Toad

1



### Creature — Fungus Artificer

As long as you control a Vehicle, Pit Crew Toad gets +2/+0.

*"Toad, reporting for duty!"*

1/1

021/360 C  
MAR • EN NINTENDO

By SethBling [Not For Sale]

## Wheelie

1



### Sorcery

Whenever target creature or Vehicle deals combat damage to a player this turn, draw two cards.

If you're in pursuit, that permanent gains "This creature can't be blocked" until end of turn. *(You're in pursuit if an opponent controls more creatures than you.)*

093/360 C  
MAR • EN NINTENDO

By SethBling [Not For Sale]

## Leave in the Dust

3



### Instant

Return target nonland permanent to its owner's hand.

Draw a card.

*"I lost to a bunch of losers!"  
—Wario the Trophyless*

074/360 C  
MAR • EN JEFFREY 'CHAMBA' CRUZ

By SethBling [Not For Sale]

## Proto Piranha

3



### Creature — Ooze

1: Target land you control becomes a 1/1 black Minion creature with haste until end of turn. It's still a land.

Spawn (1, *Exile this card from your hand: Create a 1/1 black Minion creature token. You may cast this card later from exile. Spawn only as a sorcery.*)

3/4

127/360 U  
MAR • EN NINTENDO

By SethBling [Not For Sale]

## Traffic Slip

1



### Instant

Target creature gets -1/-1 until end of turn.

If you're in pursuit, that creature gets -12/-12 until end of turn instead. *(You're in pursuit if an opponent controls more creatures than you.)*

*Slip in first and you can end up in last.*

136/360 C  
MAR • EN MLETH ON DEVIANART

By SethBling [Not For Sale]

## Shove Over

2



### Instant

Counter target spell unless its controller pays 3.

If you're in pursuit, draw a card. *(You're in pursuit if an opponent controls more creatures than you.)*

086/360 U  
MAR • EN NINTENDO

By SethBling [Not For Sale]

## Turn to Brick

3



### Enchantment

When Turn to Brick enters the battlefield, exile another target nonland permanent until Turn to Brick leaves the battlefield.

Sacrifice Turn to Brick: Create a Treasure token. *(It's an artifact with "e, Sacrifice this artifact: Add one mana of any color.")*

042/360 U  
MAR • EN NINTEGA-DARIO ON DEVIANART

By SethBling [Not For Sale]

## Crack the Eggs

1



### Sorcery

As an additional cost to cast this spell, discard a card or sacrifice a creature.

Draw two cards.

*Anything could be in these eggs; even another Yoshi!*

153/360 C  
MAR • EN YOSHIFANCLUB

By SethBling [Not For Sale]



## Heart Coach

3



### Artifact — Vehicle

Whenever Heart Coach attacks or blocks, if it was crewed by exactly two creatures this turn, you gain 5 life and draw a card.

Crew 4 (Tap any number of creatures you control with total power 4 or greater: This Vehicle becomes an artifact creature until end of turn.)

5/5

011/360 U MAR • EN PEACHYPINKPRINCESS ON DEVIANART By SethBling [Not For Sale]

## Biddybuggy

3



### Artifact — Vehicle

#### Deathtouch

Crew 1 (Tap any number of creatures you control with total power 1 or greater: This Vehicle becomes an artifact creature until end of turn.)

2/3

094/360 C MAR • EN ROTTAC ON DEVIANART By SethBling [Not For Sale]

## Bone Rattler

3



### Artifact — Vehicle

When Bone Rattler enters the battlefield, return target creature or Vehicle card from your graveyard to your hand.

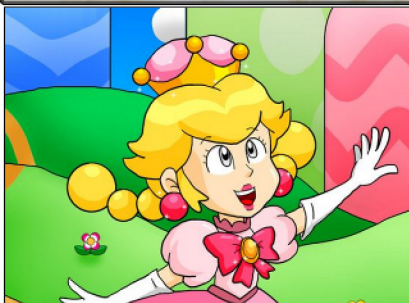
Crew 2 (Tap any number of creatures you control with total power 2 or greater: This Vehicle becomes an artifact creature until end of turn.)

4/4

099/360 C MAR • EN NINTENDO By SethBling [Not For Sale]

## Super Crown

3



### Enchantment — Aura

Enchant creature

Enchanted creature has lifelink and super. (When it dies, if it was enchanted, return it to the battlefield under its owner's control.)

034/360 C MAR • EN MISSPINKSTRIPES ON DEVIANART By SethBling [Not For Sale]

## Congested Roadway

3



### Instant

Target player creates two 0/1 white Spectator creature tokens with "This creature can't block Vehicles."

Destroy up to one target tapped creature or Vehicle if you're in pursuit. (You're in pursuit if an opponent controls more creatures than you.)

004/360 U MAR • EN NINTENDO By SethBling [Not For Sale]

## Bottomless Chasm

1



### Instant

Each player sacrifices a creature.

Spawn (1, Exile this card from your hand: Create a 1/1 black Minion creature token. You may cast this card later from exile. Spawn only as a sorcery.)

102/360 C MAR • EN ECSTATIC-ECTSY ON DEVIANART By SethBling [Not For Sale]

## Draggadon

4



### Creature — Dragon

Flying

2: Creatures you control get +1/+0 until end of turn.

Spawn (1, Exile this card from your hand: Create a 1/1 black Minion creature token. You may cast this card later from exile. Spawn only as a sorcery.)

5/5

157/360 R MAR • EN ISKETCH12 ON TUMBLR By SethBling [Not For Sale]

## Red Boo

2



### Creature — Spirit

Red Boo can't block as long as an opponent controls an untapped creature.

Spook (You may cast this card face down as a 2/2 creature for 3. When this creature dies while face-down, exile it. You may cast it later from exile for its spook cost.)

2/1

174/360 C MAR • EN SNARKEET ON DEVIANART By SethBling [Not For Sale]

## Bone Goomba

1



### Creature — Fungus Minion

When Bone Goomba dies, you draw a card and you lose 1 life.

No one cared what it was until it put on the mask.

2/1

098/360 C MAR • EN JOHN IN 3D By SethBling [Not For Sale]



# Boo-lette Wheel

3 2 2



## Sorcery

Each player discards their hand, then draws seven cards.

Spook 2 2 (You may cast this card face down as a 2/2 creature for 3. When it dies while face-down, exile it. You may cast it later from exile for its spook cost.)

144/360 R MAR • EN YOSELINFRANKCAT ON DEVIANART By SethBling [Not For Sale]

# Gushen

4 1



## Creature — Octopus

Return two lands you control to their owners' hands: Draw two cards.

Don't trust your secrets to Seaside Kingdom.

4/4

065/360 R MAR • EN NINTENDO By SethBling [Not For Sale]

# Morton Koopa

3 3 3



## Legendary Creature — Koopa

When Morton Koopa enters the battlefield, destroy target creature or Vehicle an opponent controls.

"You're history, you've had it, you're done for, it's ALL over, we win, time's up, your clock is cleaned!"

3/3

120/360 U MAR • EN TONY FERGUSON By SethBling [Not For Sale]

# Night's Whisper

1 3



## Sorcery

You draw two cards and you lose 2 life.

It can be dangerous to venture out at night. But if the conditions are just right, you can look up and see practically the whole galaxy all at once!

125/360 C MAR • EN NAOLITO ON DEVIANART By SethBling [Not For Sale]

# Rev Your Engines

3



## Enchantment

1: Target creature gets +1/+0 until end of turn. You can't activate this ability during combat.

If you time it just right, the whole race could be yours.

128/360 U MAR • EN NINTENDO By SethBling [Not For Sale]

# Muncher Patch

3



## Creature — Plant

Defender, deathtouch

They lack the biological functions necessary to digest large prey, yet their hunger for big game is unmatched.

2/1

123/360 C MAR • EN MK ON PIXIV By SethBling [Not For Sale]

# Ceiling Surprise

2 2



## Instant

Ceiling Surprise deals 3 damage to any target.

Spook 2 (You may cast this card face down as a 2/2 creature for 3. When it dies while face-down, exile it. You may cast it later from exile for its spook cost.)

149/360 C MAR • EN NINTENDO By SethBling [Not For Sale]

# Super Horn

3



## Instant

Target permanent you control gains protection from each of your opponents until end of turn. (It can't be blocked, targeted, dealt damage, enchanted, or equipped by anything controlled by those players.)

036/360 C MAR • EN NINTENDO By SethBling [Not For Sale]

# Throne Room

3



## Enchantment

Whenever you cast this spell from exile or you cast another spell from exile, you may pay 1. If you do, you draw a card and you lose 1 life.

Spawn (1, Exile this card from your hand: Create a 1/1 black Minion creature token. You may cast this card later from exile. Spawn only as a sorcery.)

135/360 U MAR • EN SUPERSHADEMARIO ON DEVIANART By SethBling [Not For Sale]



# King Bob-omb

3



Legendary Artifact Creature — Construct

When you sacrifice King Bob-omb, he deals 3 damage to target opponent and you draw three cards.

Spawn (1, *Exile this card from your hand. Create a 1/1 black Minion creature token. You may cast this card later from exile. Spawn only as a sorcery.*)

3/3

115/360 R  
MAR • EN • MRBFOX ON DEVIANART

By SethBling [Not For Sale]

# Bob-omb Cannon

1



Artifact

At the beginning of combat on your turn, you may pay 1 and sacrifice a creature. When you do, target creature gets -2/-2 until end of turn.

*Where do all the bob-ombs actually come from? No one's lived to find out.*

097/360 U  
MAR • EN • NINTENDO

By SethBling [Not For Sale]

# Gourmet Guy

2



Legendary Creature — Minion

When Gourmet Guy enters the battlefield, you may destroy target artifact or enchantment.

*"Where'd you learn to cook, truck driving school?"*

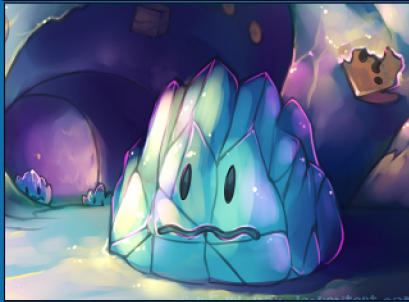
2/1

010/360 U  
MAR • EN • SUNSHINENOKA ON DEVIANART

By SethBling [Not For Sale]

# Freezie

3



Creature — Elemental

Defender

When Freezie enters the battlefield, tap target creature or Vehicle an opponent controls. That permanent doesn't untap during its controller's untap step for as long as you control Freezie.

3/3

063/360 U  
MAR • EN • SULFURBUNNY ON DEVIANART

By SethBling [Not For Sale]

# Justice Toad

1



Creature — Fungus Advisor

Spells your opponents cast from exile cost 1 more to cast.

Super (*When this creature dies, if it was enchanted, return it to the battlefield under its owner's control.*)

*"For Justice!"*

2/2

014/360 U  
MAR • EN • NINTENDO

By SethBling [Not For Sale]

# Capture on Canvas

2



Sorcery

Turn target nonland permanent face down. (*It's a 2/2 creature.*)

Spook 1 (You may cast this card face down as a 2/2 creature for 3. When it dies while face-down, exile it. You may cast it later from exile for its spook cost.)

054/360 C  
MAR • EN • NINTENDO

By SethBling [Not For Sale]

# Bob-omb

1



Artifact Creature — Construct Minion

When you sacrifice Bob-omb, choose one —

- Bob-omb deals 3 damage to target creature.
- Destroy target artifact.

2/1

143/360 C  
MAR • EN • HIKARUSHIFU ON DEVIANART

By SethBling [Not For Sale]

# Cosmic Clone

2



Creature — Shapeshifter

You may have Cosmic Clone enter the battlefield as a copy of any creature on the battlefield or creature card in exile, except its name is Cosmic Clone, and it has haste and "At the beginning of the end step, sacrifice this creature."

0/0

152/360 R  
MAR • EN • MRBUTCHINSX117 ON GAMEBANANA By SethBling [Not For Sale]

# Haunted Chest

1



Artifact

4, : Draw a card and create a Treasure token. (*It's an artifact with "Sacrifice this artifact: Add one mana of any color."*)

Spook (You may cast this card face down as a 2/2 creature for 3. When it dies while face-down, exile it. You may cast it later from exile for its spook cost.)

066/360 U  
MAR • EN • NINTENDO

By SethBling [Not For Sale]



## Sidestepper

1



Creature — Crab

♣: Untap Sidestepper.

*What's mad and red and flips right over?*

2/1

088/360 C  
MAR • EN • MYSTEREGAMINGYT ON DEVIANART By SethBling [Not For Sale]

## Magikooa's Blast

1



Instant

Counter target spell unless its controller pays 2. If that spell is countered this way, you create a Treasure token. (It's an artifact with "♣, Sacrifice this artifact: Add one mana of any color.")

076/360 C  
MAR • EN • ALLENSANCHES ON DEVIANART

By SethBling [Not For Sale]

## Ghost Writing

2



Sorcery

Draw two cards.

Spook 1 ♣ (You may cast this card face down as a 2/2 creature for 3. When it dies while face-down, exile it. You may cast it later from exile for its spook cost.)

064/360 C  
MAR • EN • NINTENDO

By SethBling [Not For Sale]

## Birdley

♣



Creature — Bird

Flying, vigilance, lifelink

*Dr. Toadley's pet bird fluttered in the lives of Mario and Luigi as an utter nuisance, but grew to become a guiding light and a dear friend.*

1/1

002/360 U  
MAR • EN • MRBOWZ ON DEVIANART

By SethBling [Not For Sale]

## Bully

1



Artifact Creature — Construct Minion

2/3

104/360 C  
MAR • EN • CHOPPEE ON DEVIANART

By SethBling [Not For Sale]

## Shiverian Racer

1



Creature — Beast Scout

3/1

027/360 C  
MAR • EN • TECHNPHHIA ON DEVIANART

By SethBling [Not For Sale]

## Boom Boom

2



Creature — Koopa Minion

5/2

145/360 C  
MAR • EN • KNIGHT-MI ON DEVIANART

By SethBling [Not For Sale]

## Dorrie

3



Creature — Dinosaur

2/7

059/360 C  
MAR • EN • NINTENDO

By SethBling [Not For Sale]

## Hellen Gravely

3



Legendary Creature — Spirit

At the beginning of each player's upkeep, that player sacrifices a nonland permanent.

Spook 3 ♣ (You may cast this card face down as a 2/2 creature for 3. When this creature dies while face-down, exile it. You may cast it later from exile for its spook cost.)

4/4

114/360 R  
MAR • EN • HANZHENG TANG

By SethBling [Not For Sale]



## Starship Mario

2



### Artifact — Vehicle

Flying

When Starship Mario enters the battlefield, create two 2/2 green and white Fungus creature tokens.

Crew 4 (Tap any number of creatures you control with total power 4 or greater: This Vehicle becomes an artifact creature until end of turn.)

3/3

033/360 R  
MAR • EN NINTENDO

By SethBling [Not For Sale]

## I Made This

2



### Instant

Publish (If there are four or more card types among permanents you control, you're a maker for the rest of the game.)

Counter target spell. If you're a maker, exile it instead. You may cast that card for as long as it remains exiled, and you may spend mana as though it were mana of any color to cast it.

067/360 R  
MAR • EN EMPEROR\_PIXEL

By SethBling [Not For Sale]

## Sand Trap

2



### Sorcery

Choose one —

- Destroy target artifact.
- Destroy target enchantment.
- Destroy target creature with power 4 or greater.

026/360 C  
MAR • EN NINTENDO

By SethBling [Not For Sale]

## Curve Ball

1



### Instant

Counter target spell unless its controller pays 1.

You may untap a land.

*Swing and a miss!*

057/360 C  
MAR • EN NINTENDO

By SethBling [Not For Sale]

## Endless Challenge

5



### Enchantment

Publish (If there are four or more card types among permanents you control, you're a maker for the rest of the game.)

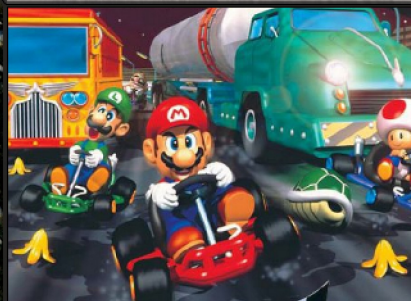
Whenever another permanent is put into your graveyard from the battlefield, if you're a maker, return it to the battlefield at the beginning of the next end step.

007/360 M  
MAR • EN NINTENDO

By SethBling [Not For Sale]

## Street Race

1



### Enchantment

At the beginning of your upkeep, each opponent creates a 0/1 white Spectator creature token with "This creature can't block Vehicles."

Whenever one or more Vehicles you control attack a player, that player loses 1 life for each Spectator they control.

133/360 R  
MAR • EN NINTENDO

By SethBling [Not For Sale]

## Daring Demolition

2



### Sorcery

Destroy target creature or Vehicle.

*A king must know how to delegate work to his subordinates, and a bob-omb only does one kind of work.*

105/360 C  
MAR • EN NINTEGA DARIO

By SethBling [Not For Sale]

## Super Hammer

3



### Enchantment — Aura

Enchant creature

Enchanted creature gets +2/+2 and has vigilance.

Enchanted creature has "X, ♣: Return target artifact card with mana value X from your graveyard to the battlefield."

035/360 U  
MAR • EN SAB64 ON DEVIANART

By SethBling [Not For Sale]

## Bowser Jr.

1



### Legendary Creature — Koopa

Whenever Bowser Jr. becomes tapped, target creature an opponent controls gets -1/-1 until end of turn.

*"Don't you know when to quit?! I'm gonna enjoy taking you out from the cozy confines of my robot cockpit!"*

2/1

103/360 U  
MAR • EN MRTHECOOLDUDE ON DEVIANART

By SethBling [Not For Sale]



## Hungry Luma

2



### Creature — Elemental

Flying

When Hungry Luma enters the battlefield, you may put target face-up exiled card into its owner's graveyard.

*Lumas will consume just about anything when they're hungry.*

3/1

013/360 U  
MAR • EN LEMIACRESCENT ON DEVIANART

By SethBling [Not For Sale]

## Gold Standard

1



### Artifact — Vehicle

Whenever Gold Standard attacks or blocks, create a Treasure token. *(It's an artifact with "♣, Sacrifice this artifact: Add one mana of any color.")*

Crew 1 *(Tap any number of creatures you control with total power 1 or greater: This Vehicle becomes an artifact creature until end of turn.)*

2/3

009/360 C  
MAR • EN NINTENDO

By SethBling [Not For Sale]

## Flame Flyer

1



### Artifact — Vehicle

Whenever a creature dies, if a Vehicle you control dealt damage to it this turn, draw a card.

Crew 2 *(Tap any number of creatures you control with total power 2 or greater: This Vehicle becomes an artifact creature until end of turn.)*

4/2

111/360 R  
MAR • EN MASA

By SethBling [Not For Sale]

## Cheep Charger

1



### Artifact — Vehicle

Whenever Cheep Charger or another Vehicle enters the battlefield under your control, you may create a 1/1 blue Fish creature token.

Crew 1 *(Tap any number of creatures you control with total power 1 or greater: This Vehicle becomes an artifact creature until end of turn.)*

2/2

055/360 U  
MAR • EN NINTENDO

By SethBling [Not For Sale]

## Steel Driver

1



### Artifact — Vehicle

Vehicles you control can't be blocked by creatures with greater power.

Crew 1 *(Tap any number of creatures you control with total power 1 or greater: This Vehicle becomes an artifact creature until end of turn.)*

1/4

090/360 U  
MAR • EN NINTENDO

By SethBling [Not For Sale]

## Shrink Lightning

2



### Sorcery

If you're in pursuit, you may cast this spell as though it had flash. *(You're in pursuit if an opponent controls more creatures than you.)*

Destroy all 1/1 creatures. All other creatures have base power and toughness 1/1 until end of turn.

030/360 R  
MAR • EN NINTENDO

By SethBling [Not For Sale]

## Shooting Star

2



### Artifact — Vehicle

When Shooting Star enters or leaves the battlefield, create a 1/1 white Elemental creature token with flying.

Crew 1 *(Tap any number of creatures you control with total power 1 or greater: This Vehicle becomes an artifact creature until end of turn.)*

3/2

028/360 C  
MAR • EN NINTENDO

By SethBling [Not For Sale]

## Bumper

1



### Artifact

When Bumper enters the battlefield, return another target permanent you control to its owner's hand.

1 ♠: Return Bumper to its owner's hand.

BOIOIOING!!!!

053/360 C  
MAR • EN NINTENDO

By SethBling [Not For Sale]

## Dash Pepper

2



### Enchantment — Aura

Enchant creature

Enchanted creature gets +2/+0 and has haste.

*Hothothothothothothothot!!*

154/360 C  
MAR • EN HUGO-H2P ON DEVIANART

By SethBling [Not For Sale]



# Mega Mole

2



Creature — Mole

4/4

016/360 C  
MAR • EN • SUPEREDCO ON DEVIANART

By SethBling [Not For Sale]

# All That Glitters

1



Enchantment — Aura

Enchant creature

Enchanted creature gets +1/+1 for each artifact and/or enchantment you control.

*Happiness is a hundred coins.*

001/360 C  
MAR • EN • NINTENDO

By SethBling [Not For Sale]

# Boss Rush

3



Sorcery

Creatures you control get +2/+0 and gain haste until end of turn.

Spawn (1, Exile this card from your hand: Create a 1/1 black Minion creature token. You may cast this card later from exile. Spawn only as a sorcery.)

147/360 C  
MAR • EN • FAYNSTER ON DEVIANART

By SethBling [Not For Sale]

# Exclude

2



Instant

Counter target creature spell.  
Draw a card.

*Left behind by the princess on the moon, he had ample time to consider whether he'd been chasing an unattainable goal, an unrequited love. He decided no.*

060/360 C  
MAR • EN • NINTENDO

By SethBling [Not For Sale]

# Shroob

1



Creature — Alien Minion

Shroob can't block.

*"One day, the shroobs will dance on the buried remains of this pathetic kingdom!"*  
—Elder Shroob Princess

2/1

131/360 C  
MAR • EN • NINTENDO

By SethBling [Not For Sale]

# Nabbit

1



Creature — Rabbit Rogue

When Nabbit enters the battlefield, target opponent discards a card.

*The self-proclaimed greatest thief in the Mushroom Kingdom.*

2/2

124/360 C  
MAR • EN • TIMMYPIRANHA ON DEVIANART

By SethBling [Not For Sale]

# Birdo

2



Creature — Dinosaur Warrior

Whenever Birdo attacks, you may pay 1. If you do, it deals damage equal to its power to the player or planeswalker it's attacking.

Super (When this creature dies, if it was enchanted, return it to the battlefield under its owner's control.)

1/1

141/360 U  
MAR • EN • ROY'S SPORTS HALL

By SethBling [Not For Sale]

# Ice-Blue

3



Artifact — Vehicle

Whenever Ice-Blue enters the battlefield or attacks, tap any number of target creatures with total power 2 or less. They don't untap during their controllers' next untap step.

Crew 2 (Tap any number of creatures you control with total power 2 or greater: This Vehicle becomes an artifact creature until end of turn.)

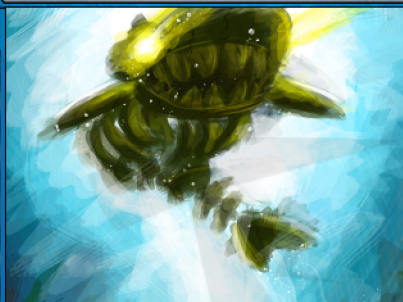
6/6

068/360 R  
MAR • EN • NINTENDO

By SethBling [Not For Sale]

# Kingfin

4



Legendary Creature — Skeleton Shark

When Kingfin enters the battlefield, create two 1/1 blue Fish creature tokens.

Fish you control get +1/+1.

Spook 4 (You may cast this card face down as a 2/2 creature for 3. When this creature dies while face-down, exile it. You may cast it later from exile for its spook cost.)

3/3

073/360 R  
MAR • EN • MOTHERGARCHOMP622

By SethBling [Not For Sale]