

Super Mario

1 2 3 4



Legendary Creature — Human Plumber

Haste

As Super Mario enters the battlefield, if you cast him, create a green Aura enchantment token named Mushroom Power attached to him. It has enchant creature and "Enchanted creature gets +2/+2."

Super (When this creature dies, if it was enchanted, return it to the battlefield under its owner's control.)

3/3

285/360 M
MAR • EN • GTS ON DEVIANART

By SethBling [Not For Sale]

Parade Kart

5 6 7 8



Artifact — Vehicle

At the beginning of your upkeep, if you're in pursuit, you gain 1 life and draw a card. (You're in pursuit if an opponent controls more creatures than you.)

3 4 5: Each Vehicle you control becomes an artifact creature until end of turn.

Crew 3

5/5

268/360 M
MAR • EN • NINTENDO

By SethBling [Not For Sale]

Bowser, King Koopa

2 3 4 5



Legendary Creature — Koopa Noble

1 2: Bowser gets +2/+0 until end of turn.

3 4 5, Sacrifice another creature: Bowser gets +4/+4 and gains trample until end of turn. Activate only once each turn.

Spawn (1, Exile this card from your hand: Create a 1/1 black Minion creature token. You may cast this card later from exile. Spawn only as a sorcery.)

4/4

239/360 M
MAR • EN • TOSHUMMANA ON DEVIANART

By SethBling [Not For Sale]

Valley of Bowser



Land

Valley of Bowser enters the battlefield tapped.

3 4 5: Add 3, 4, or 5.

357/360 U
MAR • EN • MARIANAFM

By SethBling [Not For Sale]

Course World



Land

Course World enters the battlefield tapped.

3 4 5: Add 3, 4, or 5.

338/360 U
MAR • EN • NINTENDO

By SethBling [Not For Sale]

Mario Kart Stadium



Land

Mario Kart Stadium enters the battlefield tapped.

3 4 5: Add 3, 4, or 5.

348/360 U
MAR • EN • NINTENDO

By SethBling [Not For Sale]

Luigi's Mansion



Land

Luigi's Mansion enters the battlefield tapped.

3 4 5: Add 3, 4, or 5.

347/360 U
MAR • EN • ORIOLO

By SethBling [Not For Sale]

Mushroom Kingdom



Land

Mushroom Kingdom enters the battlefield tapped.

3 4 5: Add 3, 4, or 5.

349/360 U
MAR • EN • NINTENDO

By SethBling [Not For Sale]

Goomba



Creature — Fungus Minion

2/1

197/360 C
MAR • EN • EVANK7501 ON FLICKR

By SethBling [Not For Sale]

Reznor

2 2



Creature — Dinosaur

4 Hits (This creature enters the battlefield with four +1/+1 counters on it. If damage would be dealt to it while it has a +1/+1 counter on it, remove one instead.)

1: Reznor gets +2/+0 until end of turn.

0/0

276/360 U
MAR • EN BLAZETBW ON DEVIANART

By SethBling [Not For Sale]

Mushroom Power

1



Enchantment — Aura

Enchant creature
Enchanted creature gets +2/+2.

207/360 C
MAR • EN NINTENDO

By SethBling [Not For Sale]

Blue Shell

1



Sorcery

If you're in pursuit, you may cast this spell as though it had flash. (You're in pursuit if an opponent controls more creatures than you.)

Destroy each creature with the greatest power.

The first shall be last, and the last, first.

233/360 U
MAR • EN SCOTT JOHNSON

By SethBling [Not For Sale]

Poison Bog



Land

Poison Bog enters the battlefield tapped.

When Poison Bog enters the battlefield, scry 1.

: Add or .

351/360 U
MAR • EN NINTENDO

By SethBling [Not For Sale]

Forest of Illusion



Land

Forest of Illusion enters the battlefield tapped.

When Forest of Illusion enters the battlefield, scry 1.

: Add or .

342/360 U
MAR • EN LEODIAMONDBLOG

By SethBling [Not For Sale]

Last Resort Hotel



Land

Last Resort Hotel enters the battlefield tapped.

When Last Resort Hotel enters the battlefield, scry 1.

: Add or .

345/360 U
MAR • EN NINTENDO

By SethBling [Not For Sale]

Wario Stadium



Land

Wario Stadium enters the battlefield tapped.

When Wario Stadium enters the battlefield, scry 1.

: Add * or .

358/360 U
MAR • EN NINTENDO

By SethBling [Not For Sale]

Dinosaur Land



Land

Dinosaur Land enters the battlefield tapped.

When Dinosaur Land enters the battlefield, scry 1.

: Add or *.

339/360 U
MAR • EN DANIEL BOGNI

By SethBling [Not For Sale]

Grumble Volcano



Land

Grumble Volcano enters the battlefield tapped.

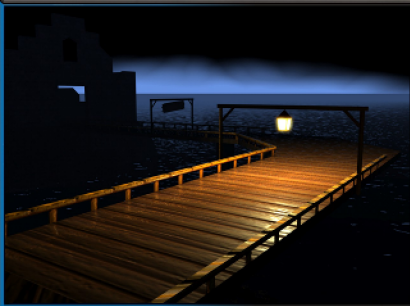
When Grumble Volcano enters the battlefield, scry 1.

: Add or .

343/360 U
MAR • EN DAVE BOLTON

By SethBling [Not For Sale]

Banshee Boardwalk



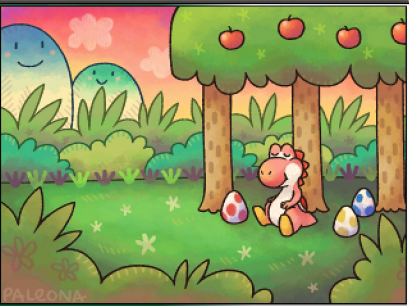
Land

Banshee Boardwalk enters the battlefield tapped.
When Banshee Boardwalk enters the battlefield, scry 1.
: Add or .

334/360 U
MAR • EN @PEARDIAN

By SethBling [Not For Sale]

Yoshi's House



Land

Yoshi's House enters the battlefield tapped.
When Yoshi's House enters the battlefield, scry 1.
: Add or .

360/360 U
MAR • EN PALEONA ON DEVIANART

By SethBling [Not For Sale]

DK Mountain



Land

DK Mountain enters the battlefield tapped.
When DK Mountain enters the battlefield, scry 1.
: Add or .

340/360 U
MAR • EN NINTENDO

By SethBling [Not For Sale]

Rainbow Road



Land

: Add .
: Add one mana of any color.
Activate only if you control four or more lands.

352/360 R
MAR • EN SAMUKASME14 ON DEVIANART

By SethBling [Not For Sale]

Wiggler



Creature — Insect Minion

Whenever Wiggler is dealt damage, put a +1/+1 counter on it.
As long as Wiggler has a +1/+1 counter on it, it attacks each combat if able.

3/3

228/360 C
MAR • EN DRAGOART

By SethBling [Not For Sale]

Form of Bullet Bill



Instant

This spell costs 2 less to cast if you're in pursuit. (*You're in pursuit if an opponent controls more creatures than you.*)
Until end of turn, target creature or Vehicle you control gets +1/+1 for each creature you don't control. Creatures you don't control get -1/-1 until end of turn.

252/360 U
MAR • EN NINTENDO

By SethBling [Not For Sale]

Shy Guy



Creature — Minion

: Add or .
"Once smitten, twice shy..."

1/1

217/360 C
MAR • EN PIRANHARTIST ON DEVIANART

By SethBling [Not For Sale]

Big World



Enchantment

Minions you control get +3/+3.
Spawn (1, Exile this card from your hand: Create a 1/1 black Minion creature token. You may cast this card later from exile. Spawn only as a sorcery.)

187/360 R
MAR • EN ESPENARTMAN ON ARTSTATION

By SethBling [Not For Sale]

Flower



Sorcery
Search your library for a basic Forest or Plains card, reveal it, put it into your hand, then shuffle.

Fire



Instant
Fire deals 2 damage divided as you choose among one or two targets.

By SethBling [Not For Sale]
BEANWITHGLASSES ON DEVIANART

THE 360 U
MAR • EN DR-REIKO ON DEVIANART

Piranha Plant

1



Creature — Plant Minion

Defender

2, ♣: Piranha Plant deals 2 damage to target opponent.

A fiery spirit and a hungry soul.

2/1

212/360 C
MAR • EN TOSHUMMANA ON DEVIANTART

By SethBling [Not For Sale]

Frog Suit

1



Enchantment — Aura

Enchant creature

Enchanted creature gets +1/+1.

1 ♠: Enchanted creature can't be blocked this turn.

"Blub-a blub! BLUB-bl-blub!"

195/360 C
MAR • EN NINTENDO POWER

By SethBling [Not For Sale]

Wario, Greed Incarnate

3



Legendary Creature — Human Rogue

Menace

2 ♠, ♣: Gain control of target artifact or creature an opponent controls until end of turn. Untap it. It gains haste until end of turn. Activate only as a sorcery.

"WAH!!"

4/3

291/360 R
MAR • EN IMSON ON DEVIANTART

By SethBling [Not For Sale]

Comet Observatory



Land

♣, Sacrifice Comet Observatory: Search your library for a basic land card, put it onto the battlefield tapped, then shuffle.

337/360 C
MAR • EN ROSALINA-LUMA ON DEVIANTART

By SethBling [Not For Sale]

Expendable Army

1



Instant

Create X 1/1 black Minion creature tokens.

"See what you're up against, Mario?"
—Bowser, King Koopa

192/360 U
MAR • EN EMORTAL982 ON DEVIANTART

By SethBling [Not For Sale]

Giant Banana

1



Artifact

Flash

* ♣, Sacrifice Giant Banana: Giant Banana deals 5 damage to target attacking creature.

319/360 C
MAR • EN NINTENDO

By SethBling [Not For Sale]

Green Yoshi

2



Enchantment Creature — Dinosaur

Bestow 4 ♠ (If you cast this card for its bestow cost, it's an Aura spell with enchant creature. It becomes a creature again if it's not attached to a creature.)

Enchanted creature gets +3/+3.

3/3

201/360 C
MAR • EN CORTOONY ON DEVIANTART

By SethBling [Not For Sale]

Peach's Crown

2



Artifact

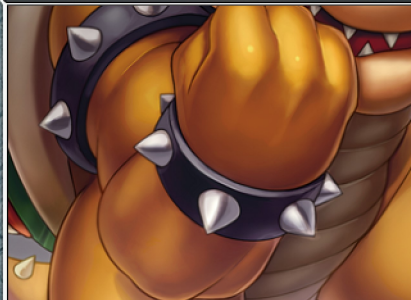
1, ♣: Add * ♠.

327/360 C
MAR • EN BRITANNY MURPHY

By SethBling [Not For Sale]

Bowser's Wristband

2



Artifact

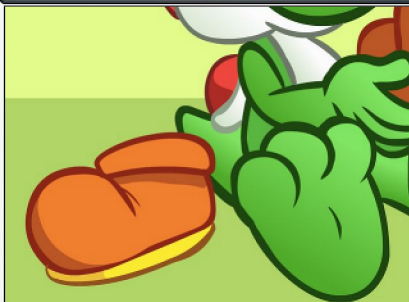
1, ♣: Add ♠ ♠.

316/360 C
MAR • EN HYBRIDMINK ON DEVIANTART

By SethBling [Not For Sale]

Yoshi's Shoe

2



Artifact

1, ♠: Add ♣*.

333/360 C
MAR • EN GREENYOSHI25 ON DEVIANART

By SethBling [Not For Sale]

Donkey Kong's Tie

2



Artifact

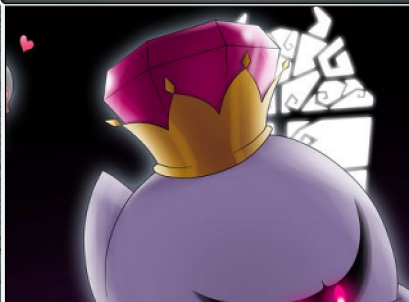
1, ♠: Add ♠♣.

318/360 C
MAR • EN THEPIXELWORKER ON DEVIANART

By SethBling [Not For Sale]

King Boo's Crown

2



Artifact

1, ♠: Add ♠♠.

323/360 C
MAR • EN ZIEGHOST ON DEVIANART

By SethBling [Not For Sale]

Ice Power



Enchantment — Aura

Enchant creature
Whenever enchanted creature
becomes tapped, tap target creature.
What's cooler than being cool?

299/360 C
MAR • EN NINTENDO

By SethBling [Not For Sale]

Toad



Creature — Fungus

Super *(When this creature dies, if it
was enchanted, return it to the
battlefield under its owner's control.)*
*Never in the spotlight, yet always shines
bright.*

2/2

305/360 C
MAR • EN TOSHUA DUNLOP

By SethBling [Not For Sale]

Thwomp Stomp



Sorcery

Thwomp Stomp deals 6 damage to
target creature without flying.
Tromped by the thwomp stomp.

182/360 C
MAR • EN MASEBREAKER ON DEVIANART

By SethBling [Not For Sale]

Para-Goomba



Creature — Fungus Minion

Flash
When Para-Goomba enters the
battlefield, it gets +1/+1 and gains
flying until end of turn.

2/1

209/360 C
MAR • EN TDDOG

By SethBling [Not For Sale]

Culex, Dark Knight of Vanda



Legendary Planeswalker — Culex

- −1: Add ♠. When you do, Culex deals 2 damage to any target.
- −1: Add ♣. When you do, untap all creatures you control.
- −1: Add *. When you do, exile target enchantment.
- −1: Add ♠. When you do, scry 1, then draw a card.

4

246/360 M
MAR • EN FROST-VIXEN ON DEVIANART

By SethBling [Not For Sale]

Mortar



Instant

Destroy target attacking
or blocking creature.

Brick



Sorcery

Destroy target artifact or
enchantment. Create a
Treasure token. *(It's an artifact
with "♠", Sacrifice this artifact:
Add one mana of any color.)*

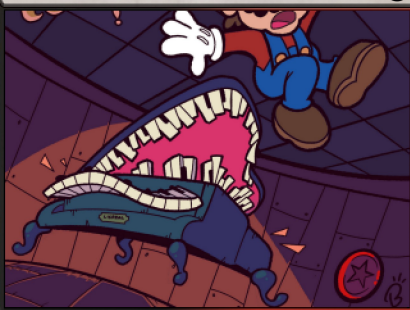
By SethBling [Not For Sale]

AULIE ON DEVIANART

THE 350 C
MAR • EN JAMES BOYLE

Mad Piano

4



Artifact Creature — Spirit Construct

Menace

Morph 2 ♠, Spook 3 ♠ (You may cast this card face down as a 2/2 creature for 3. Turn it face up any time for its morph cost. When it dies while face down, exile it, and you may cast it later from exile for its spook cost.)

6/3

301/360 C
MAR • EN WAFLEDAGW ON DEVIANART

By SethBling [Not For Sale]

Wrong Castle

1



Instant

Put target creature that dealt damage to you this turn into its owner's library third from the top.

"Thank you Mario! But our princess is in another castle!"
—Toad

312/360 U
MAR • EN OBYIAN

By SethBling [Not For Sale]

Super Star

2



Enchantment — Aura

Flash

Enchant creature

Enchanted creature has deathtouch, trample, indestructible, and hexproof.

At the beginning of your upkeep, sacrifice Super Star.

221/360 U
MAR • EN NATAN GENTIL

By SethBling [Not For Sale]

Goomba's Shoe

2



Artifact — Equipment

Equipped creature gets +2/+2 and has reach.

Equip Minion 0

Equip 2

198/360 U
MAR • EN TED ON DEVIANART

By SethBling [Not For Sale]

1-Up

1



Enchantment — Aura

Enchant creature

When 1-Up enters the battlefield, put a +1/+1 counter on enchanted creature.

Enchanted creature has extra hits. (If damage would be dealt to it while it has a +1/+1 counter on it, remove one instead.)

294/360 C
MAR • EN AHMED-ART ON DEVIANART

By SethBling [Not For Sale]

Kamek's Boon

3



Enchantment — Aura

Enchant creature

Enchanted creature gets +3/+3 and has trample.

Spawn (1, Exile this card from your hand: Create a 1/1 black Minion creature token. You may cast this card later from exile. Spawn only as a sorcery.)

203/360 C
MAR • EN HANS TSENG

By SethBling [Not For Sale]

Luigi, Player Two

1



Legendary Creature — Human Plumber

Reach

Whenever you attack or block with Luigi and exactly one other creature, you may pay 1. If you do, draw a card.

Super (When this creature dies, if it was enchanted, return it to the battlefield under its owner's control.)

3/3

264/360 R
MAR • EN TSUJIAART ON DEVIANART

By SethBling [Not For Sale]

Slipstream

1



Instant

If you're in pursuit, draw a card. (You're in pursuit if an opponent controls more creatures than you.)

Up to one target Vehicle becomes an artifact creature until end of turn. It gets +2/+2 until end of turn.

304/360 C
MAR • EN FELIPAO4 ON DEVIANART

By SethBling [Not For Sale]



Dash

Instant

Target creature gets -2/-2 until end of turn.



Double

Sorcery

Create a token that's a copy of target Vehicle, except it's a creature in addition to its other types.

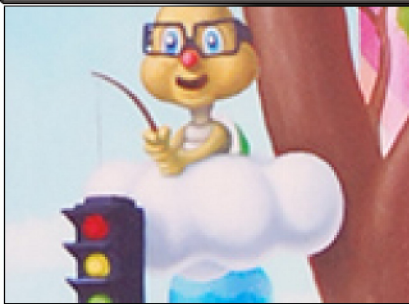
By SethBling [Not For Sale]

NINTENDO

304/360 U
MAR • EN NINTENDO

Traffic Lakitu

3



Creature — Koopa

Flying

When Traffic Lakitu enters the battlefield, you may return target Vehicle card from your graveyard to the battlefield.

"That'll be two coins, please!"

2/1

307/360 U
MAR • EN • IT8BIT

By SethBling [Not For Sale]

Toadette

1



Creature — Fungus

Whenever you cast an Aura spell, draw a card.

Super (When this creature dies, if it was enchanted, return it to the battlefield under its owner's control.)

Pink is the new red.

2/2

288/360 R
MAR • EN • INZANATI ON DEVIANART

By SethBling [Not For Sale]

Goo-Goo Buggy

2



Artifact — Vehicle

Haste

Crew 1 (Tap any number of creatures you control with total power 1 or greater: This Vehicle becomes an artifact creature until end of turn.)

3/3

321/360 C
MAR • EN • NINTENDO

By SethBling [Not For Sale]

Chain Chomp

1



Artifact Creature — Construct

Defender

Sacrifice another artifact: Chain Chomp loses defender and gains "This creature attacks each combat if able." (This effect lasts indefinitely.)

3/1

317/360 U
MAR • EN • VINCENTBISSCHOP ON DEVIANART

By SethBling [Not For Sale]

The Odyssey

3



Legendary Artifact — Vehicle

Flying

The Odyssey gets +1/+1 for each differently named noncreature permanent you control.

Crew 4 (Tap any number of creatures you control with total power 4 or greater: This Vehicle becomes an artifact creature until end of turn.)

2/2

267/360 R
MAR • EN • ZIEGHOST ON DEVIANART

By SethBling [Not For Sale]

Spear

2



Artifact — Vehicle

Spear can't be blocked.

Crew 2 (Tap any number of creatures you control with total power 2 or greater: This Vehicle becomes an artifact creature until end of turn.)

4/2

282/360 U
MAR • EN • NINTENDO

By SethBling [Not For Sale]

Letter from the Princess

2



Artifact

Mountains are red.

Islands are blue.

All creatures with super get +2/+2.

263/360 R
MAR • EN • NINTENDO

By SethBling [Not For Sale]

Enter the Painting

1



Sorcery

Look at the top six cards of your library. You may put a land card from among them onto the battlefield tapped. If you do, each opponent creates a 1/1 black Minion creature token. Put the rest on the bottom of your library in a random order.

190/360 U
MAR • EN • SUPRVIDEOGAMELAND ON DEVIANART

By SethBling [Not For Sale]

Ruined Dragon

4



Legendary Creature — Dragon

Flying

When Ruined Dragon enters the battlefield, you may sacrifice a creature. When you do, destroy target creature or Vehicle.

Spawn (1, Exile this card from your hand: Create a 1/1 black Minion creature token. You may cast this card later from exile. Spawn only as a sorcery.)

3/3

279/360 R
MAR • EN • NOLAN192 ON DEVIANART

By SethBling [Not For Sale]

Stack of Goombas



Creature — Fungus Minion

X Hits (This creature enters the battlefield with X +1/+1 counters on it. If damage would be dealt to it while it has a +1/+1 counter on it, remove one instead.)

If you can't be smarter than the enemy, at least be taller.

0/0

219/360 C
MAR • EN • NINTENDO

By SethBling [Not For Sale]

Urgent Possession



Sorcery

As an additional cost to cast this spell, sacrifice a face-down or Spirit creature.

Gain control of target creature or Vehicle. It gains haste.

289/360 R
MAR • EN • GEEKYTHEMARIOTAKU ON DEVIANART

By SethBling [Not For Sale]

Fishin' Boo



Creature — Spirit

Deathtouch, flying

At the beginning of combat on each opponent's turn, up to one target creature attacks this combat if able.

Spook (You may cast this card face down as a 2/2 creature for 3. When this creature dies while face-down, exile it. You may cast it later from exile for its spook cost.)

1/1

251/360 U
MAR • EN • SHADYGAMING ON DEVIANART

By SethBling [Not For Sale]

Gooigi



Legendary Creature — Ooze Shapeshifter

1: Gooigi can't be blocked this turn.

2: Put Gooigi from your graveyard or from exile on top of your library.

3: Target player must attack with at least one creature this combat if able.

4: Gooigi gets +1/-1 or -1/+1 until end of turn.

3/3

255/360 M
MAR • EN • NINTENDO

By SethBling [Not For Sale]

Metal Cap



Enchantment — Aura

Enchant creature

Enchanted creature loses flying and can't have or gain flying.

Enchanted creature gets +3/+0 and has hexproof and trample.

266/360 R
MAR • EN • NINTENDO

By SethBling [Not For Sale]

Boo Cloud



Enchantment

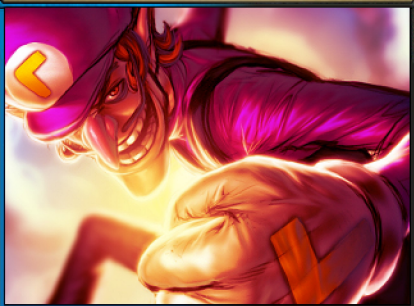
When Boo Cloud enters the battlefield, put up to two cards from your hand onto the battlefield face down. (They're 2/2 creatures.)

Face-down and/or Spirit creatures you control get +1/+1.

236/360 R
MAR • EN • ADAM-LEONHARDT ON DEVIANART

By SethBling [Not For Sale]

Waluigi, Spite Incarnate



Legendary Creature — Human Rogue

Whenever an opponent draws a card, you draw a card and you lose 1 life.

"WAH!!"

2/3

290/360 R
MAR • EN • PIRATE-CASHOO ON DEVIANART

By SethBling [Not For Sale]

Roy Koopa



Legendary Creature — Koopa

Trample

Roy Koopa can't block.

4: Sacrifice Roy Koopa: Target attacking creature gets +3/+3 and gains trample until end of turn.

3/3

278/360 R
MAR • EN • SERACROST ON DEVIANART

By SethBling [Not For Sale]

Bomb Boo



Creature — Spirit

When you sacrifice Bomb Boo, it deals 3 damage to any target.

Spook (You may cast this card face down as a 2/2 creature for 3. When this creature dies while face-down, exile it. You may cast it later from exile for its spook cost.)

3/1

234/360 C
MAR • EN • SAMMYSTAR ON COLORSLIVE

By SethBling [Not For Sale]

Troubling Season



Enchantment

If you would create a 1/1 token, you may instead pay 1 and create two of those tokens.

Double, double, toil and trouble.

224/360 R
MAR • EN LC-HOLY ON DEVIANART

By SethBling [Not For Sale]

Hero's Calling



Sorcery

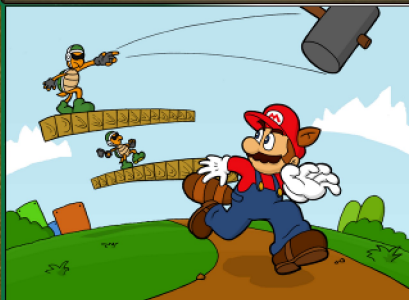
Look at the top six cards of your library. Reveal up to one Aura card or card with super from among them and put it on top of your library. Put the rest on the bottom in a random order.

Draw a card.

202/360 U
MAR • EN BARRY BLANKENSHIP

By SethBling [Not For Sale]

Hammer Bros.



Creature — Koopa Minion

First strike, reach

2 Hits (This creature enters the battlefield with two +1/+1 counters on it. If damage would be dealt to it while it has a +1/+1 counter on it, remove one instead.)

0/0

257/360 U
MAR • EN ATTICUS-W ON DEVIANART

By SethBling [Not For Sale]

Poltergust 3000



Artifact — Equipment

Equipped creature gets +2/+2.

Whenever equipped creature attacks, up to one target creature blocks it this turn if able. If that creature would die this turn, exile it instead.

Equip 3

270/360 U
MAR • EN KNOW-KNAME ON DEVIANART

By SethBling [Not For Sale]

Princess Daisy



Legendary Creature — Human Noble

Whenever an Aura you control becomes attached to Princess Daisy, you may pay 2. When you do, destroy target artifact or enchantment.

Super (When this creature dies, if it was enchanted, return it to the battlefield under its owner's control.)

2/2

271/360 R
MAR • EN OMNIARTS

By SethBling [Not For Sale]

King Boo



Legendary Creature — Spirit Noble

Flying

King Boo gets +2/+2 for each other face-down and/or Spirit creature you control.

Spook 1 (You may cast this card face down as a 2/2 creature for 3. When this creature dies while face-down, exile it. You may cast it later from exile for its spook cost.)

2/2

260/360 R
MAR • EN ちび太

By SethBling [Not For Sale]

Green Koopa



Creature — Koopa Minion

As long as you control another Minion, Green Koopa gets +1/+0 and has trample.

Known capabilities:

- Walking in one direction.

2/2

200/360 C
MAR • EN KOMOIO ON DEVIANART

By SethBling [Not For Sale]

Iggy Koopa



Legendary Creature — Koopa

Lands enter the battlefield tapped.

Iggy Koopa always looked at the world from a somewhat skewed perspective.

3/3

300/360 R
MAR • EN C-R-O-I-T ON DEVIANART

By SethBling [Not For Sale]

Pokey



Creature — Plant Minion

3 Hits (This creature enters the battlefield with three +1/+1 counters on it. If damage would be dealt to it while it has a +1/+1 counter on it, remove one instead.)

3*: Put a +1/+1 counter on Pokey.

-1/0

213/360 U
MAR • EN NINTENDO

By SethBling [Not For Sale]

Explore

1



Sorcery

You may play an additional land this turn.

Draw a card.

"Welcome! This is Dinosaur Land. In this strange land we find that Princess Toadstool is missing again! Looks like Bowser is at it again!"

193/360 C
MAR • EN • ORIOTO ON DEVIANART

By SethBling [Not For Sale]

Bouldergeist

2



Creature — Elemental Spirit

Whenever you sacrifice a permanent for the first time each turn, up to one target land you control becomes a 3/3 Elemental creature with haste until end of turn. It's still a land.

Spawn (1, Exile this card from your hand: Create a 1/1 black Minion creature token. You may cast this card later from exile. Spawn only as a sorcery.)

2/4

237/360 R
MAR • EN • ISPUDDY ON DEVIANART

By SethBling [Not For Sale]

Close Call

1



Instant

If you're in pursuit, draw a card. (You're in pursuit if an opponent controls more creatures than you.)

Choose up to one target creature or Vehicle card in your graveyard that was put there from the battlefield this turn. Return it to the battlefield.

295/360 U
MAR • EN • SKLAVENBRAUSE ON DEVIANART

By SethBling [Not For Sale]

Final Battle

1



Sorcery

As an additional cost to cast this spell, sacrifice X permanents.

Final Battle can't be countered.

Target creature you control gets +X/+X until end of turn. Then it fights up to one target creature you don't control.

298/360 M
MAR • EN • FREE4FIREYOUTUBE ON DEVIANART

By SethBling [Not For Sale]

Remote Driving

2



Enchantment

Vehicles you control get +1/+1.

1: Target Vehicle you control becomes an artifact creature until end of turn.

Who drives the drivers?

275/360 R
MAR • EN • PRINCESS-DAISY ON DEVIANART

By SethBling [Not For Sale]

Tatanga, Alien Invader

2



Legendary Creature — Alien Pilot

Flying, deathtouch

Whenever Tatanga crews a Vehicle, that Vehicle gains flying and deathtouch until end of turn.

Taking Sarasaland from Princess Daisy was the easy part.

2/1

286/360 R
MAR • EN • GRAPIOKAD ON DEVIANART

By SethBling [Not For Sale]

Yoshi Egg

2



Creature — Dinosaur Egg

Defender

When Yoshi Egg dies, look at the top five cards of your library. You may put a permanent card from among them onto the battlefield. Put the rest on the bottom of your library in a random order.

0/2

229/360 U
MAR • EN • ZEFRENCHM ON DEVIANART

By SethBling [Not For Sale]

Strength in Numbers

1



Instant

Until end of turn, target creature gains trample and gets +X/+X, where X is the number of attacking creatures.

"What do we want!?" "MARIO!"
"When do we want it!?" "MARIO!"

220/360 C
MAR • EN • MKDRAWINGS ON DEVIANART

By SethBling [Not For Sale]

Tiny Galaxy



Land

Tiny Galaxy enters the battlefield tapped.

When Tiny Galaxy enters the battlefield, scry 1.

☞: Add * or .

355/360 U
MAR • EN • JESSIBEANS ON DEVIANART

By SethBling [Not For Sale]

Read the Blueprints

1



Sorcery

Look at the top four cards of your library. For each permanent type, you may reveal a card of that type from among them and put it into your hand. Put the rest on the bottom of your library in a random order.

274/360 R
MAR • EN NINTENDRAWER ON DEVIANART

By SethBling [Not For Sale]

Frighten the Plumber

1



Sorcery

Return target creature to its owner's hand, then that player discards a card.

Spook (You may cast this card face down as a 2/2 creature for 3. When it dies while face-down, exile it. You may cast it later from exile for its spook cost.)

253/360 U
MAR • EN BOXBIRD ON DEVIANART

By SethBling [Not For Sale]

Trapped in the Ring

2



Instant

Trapped in the Ring deals 2 damage to target creature. That creature attacks or blocks this turn if able.

Spook (You may cast this card face down as a 2/2 creature for 3. When it dies while face-down, exile it. You may cast it later from exile for its spook cost.)

183/360 C
MAR • EN SRPELO ON DEVIANART

By SethBling [Not For Sale]

Wendy O. Koopa

2



Legendary Creature — Koopa

Whenever Wendy O. Koopa attacks, create two 1/1 black Minion creature tokens that are tapped and attacking.

Sacrifice two Minions: Wendy O. Koopa gains indestructible until end of turn. Tap her.

292/360 R
MAR • EN PROFESSORFANDANGO ON DEVIANART

By SethBling [Not For Sale]

4/2

Toad Brigade

2



Creature — Fungus Scout

When Toad Brigade enters the battlefield, create a 2/2 green and white Fungus creature token.

Super (When this creature dies, if it was enchanted, return it to the battlefield under its owner's control.)

306/360 U
MAR • EN NETERG ON DEVIANART

By SethBling [Not For Sale]

2/2

Toadsworth

3



Legendary Creature — Fungus Advisor

Enchanted creatures you control get +1/+1 and have trample.

Super (When this creature dies, if it was enchanted, return it to the battlefield under its owner's control.)

223/360 U
MAR • EN SHADOWFINDEROFVENUS ON DA

By SethBling [Not For Sale]

3/3

Coursebot

2



Legendary Artifact Creature — Construct

Trample, vigilance

Publish (If there are four or more card types among permanents you control, you're a maker for the rest of the game.)

At the beginning of your upkeep, if you're a maker, draw a card and reveal it. Coursebot gets +X/+X until end of turn, where X is that card's mana value.

244/360 M
MAR • EN NINTENDO

By SethBling [Not For Sale]

4/4

Soundfrog

1



Creature — Frog Bard

Publish (If there are four or more card types among permanents you control, you're a maker for the rest of the game.)

As long as you're a maker, Soundfrog gets +2/+2 and all creatures able to block it do so.

218/360 U
MAR • EN NINTENDO

By SethBling [Not For Sale]

2/2

Heavy Troopa

1



Creature — Koopa Minion

Publish (If there are four or more card types among permanents you control, you're a maker for the rest of the game.)

As long as you're a maker, Heavy Troopa has flying, vigilance, and base power and toughness 4/4.

258/360 U
MAR • EN NINTENDO

By SethBling [Not For Sale]

1/4

Yamamura, Skilled Creator



Legendary Creature — Bird Advisor

Flying

Publish (If there are four or more card types among permanents you control, you're a maker for the rest of the game.)

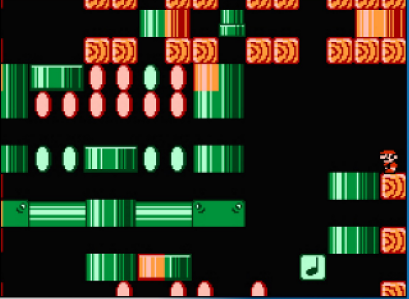
Whenever Yamamura deals combat damage to a player, if you're a maker, untap all lands you control.

2/2

293/360 R
MAR • EN NINTENDO

By SethBling [Not For Sale]

Credits Warp



Instant

Publish (If there are four or more card types among permanents you control, you're a maker for the rest of the game.)

If you're a maker, end the turn. (Exile all spells and abilities from the stack, including this card. The player whose turn it is discards down to their maximum hand size. Damage wears off, and "this turn" and "until end of turn" effects end.)

245/360 M
MAR • EN NINTENDO

By SethBling [Not For Sale]

World 1-1



Enchantment

Whenever World 1-1 enters the battlefield or you cast a spell with publish, create a 1/1 black Minion creature token and a Treasure token. (It's an artifact with "♣, Sacrifice this artifact: Add one mana of any color.")

311/360 R
MAR • EN ULTRAPLUS65 ON DEVIANART

By SethBling [Not For Sale]

Casualties of Wart



Sorcery

- Choose one or more —
- Destroy target enchantment.
 - Destroy target creature.
 - Destroy target artifact.
 - Destroy target land.
 - Destroy target planeswalker.

242/360 R
MAR • EN MASTER-RAINBOW ON DEVIANART

By SethBling [Not For Sale]

Thunder Hand



Enchantment — Aura

Flash

Enchant creature

When Thunder Hand enters the battlefield, it deals 3 damage to target blocking creature.

Enchanted creature has trample.

181/360 U
MAR • EN THELOMBAXI

By SethBling [Not For Sale]

Turnip



Enchantment — Aura

Enchant creature

Enchanted creature gets +1/+1.

2 ♣: Return Turnip from your graveyard to your hand.

225/360 U
MAR • EN ATHENAWYRM ON DEVIANART

By SethBling [Not For Sale]

Mega Mushroom



Enchantment — Aura

Enchant creature

Enchanted creature gets +5/+5 and has reach and trample.

Size matters.

205/360 R
MAR • EN RAFAELVENTURA ON DEVIANART

By SethBling [Not For Sale]

Honey Queen



Legendary Creature — Insect Noble

Flying

Publish (If there are four or more card types among permanents you control, you're a maker for the rest of the game.)

When Honey Queen enters the battlefield, if you're a maker, you gain 3 life and draw three cards.

3/3

259/360 R
MAR • EN NINTENDO

By SethBling [Not For Sale]

Bounty Board



Artifact

Publish (If there are four or more card types among permanents you control, you're a maker for the rest of the game.)

Whenever a land enters the battlefield under your control, create a Treasure token.

♣, Sacrifice two Treasures: Create a 2/2 green and white Fungus creature token. Activate only if you're a maker.

238/360 U
MAR • EN NINTENDO

By SethBling [Not For Sale]

Pianta Villager



Creature — Plant Citizen

☞: Add * or ♠.

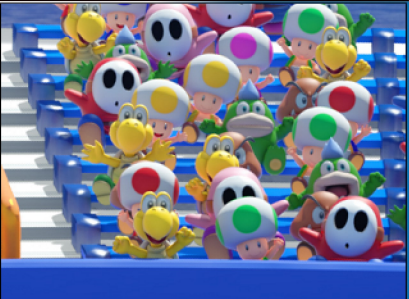
"Welcome to the sun-drenched tropical paradise of Isle Delfino!"

1/1

211/360 C
MAR • EN • KATZTRONAUT ON DEVIANART

By SethBling [Not For Sale]

Please the Crowd



Sorcery

Target player creates three 0/1 white Spectator creature tokens with "This creature can't block Vehicles."

If you're in pursuit, draw three cards. *(You're in pursuit if an opponent controls more creatures than you.)*

269/360 R
MAR • EN • NINTENDO

By SethBling [Not For Sale]

Something Wicked



Enchantment

At the beginning of your upkeep, look at the top card of your library. You may exile it. For as long as it remains exiled, you may cast it if it has spawn and you may cast it for its spook cost if it has spook.

281/360 R
MAR • EN • DAYJOHNSON ON DEVIANART

By SethBling [Not For Sale]

Weird Mushroom



Enchantment — Aura

Enchant creature

Publish *(If there are four or more card types among permanents you control, you're a maker for the rest of the game.)*

Enchanted creature can't be blocked by creatures with power 2 or less. As long as you're a maker, it gets +2/+2.

226/360 C
MAR • EN • CBARTIST

By SethBling [Not For Sale]

Snatch



Sorcery

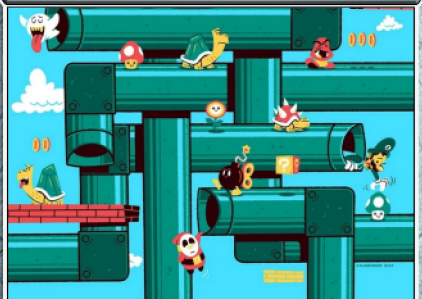
Target opponent discards two cards and you draw two cards.

There is no one's plight deemed quite so unfair as the driver whose items have been unjustly misappropriated.

280/360 U
MAR • EN • NINTENDO

By SethBling [Not For Sale]

Pipe Network



Artifact

2 ♠: Create a 1/1 black Minion creature token.

3 ♠: Draw a card.

4 *: Exile another target permanent you control, then return it to the battlefield under its owner's control.

328/360 U
MAR • EN • IAN GLAUBINGER

By SethBling [Not For Sale]

Koopa the Quick



Legendary Creature — Koopa Scout

Haste

Super *(When this creature dies, if it was enchanted, return it to the battlefield under its owner's control.)*

"When I say 'Go,' let the race begin!"

4/4

261/360 U
MAR • EN • CASSIO YOSHIYAKI SHIBUKAWA

By SethBling [Not For Sale]

Geno, Star Warrior



Legendary Creature — Avatar Warrior

Whenever Geno attacks for the first time each turn, untap all enchanted creatures you control. After this phase, there is an additional combat phase.

Super *(When this creature dies, if it was enchanted, return it to the battlefield under its owner's control.)*

4/4

254/360 R
MAR • EN • SCOTTR5680 ON DEVIANART

By SethBling [Not For Sale]

Epic Confrontation



Sorcery

Target creature you control gets +1/+2 until end of turn. It fights target creature you don't control.

It will either be a new high score or game over.

191/360 C
MAR • EN • GARY STORKAMP ON DEVIANART

By SethBling [Not For Sale]

Grand Star

1



Artifact



When Grand Star enters the battlefield, draw a card.

1, ♣: Add ♠, ♣, or *

322/360 C
MAR • EN SB7989-ART ON DEVIANART

By SethBling [Not For Sale]

Maker's Stylus

1



Artifact



When Maker's Stylus enters the battlefield, draw a card.

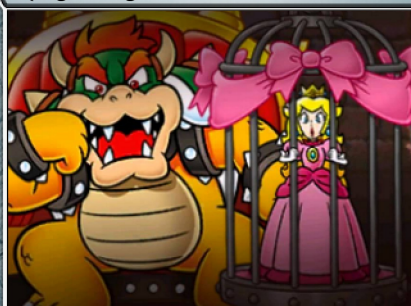
1, ♣: Add ♠, *, or ♣.

326/360 C
MAR • EN CALIDUL ON DEVIANART

By SethBling [Not For Sale]

King's Cage

1



Artifact



When King's Cage enters the battlefield, draw a card.

1, ♣: Add ♠, ♡, or ♣.

324/360 C
MAR • EN NINTENDO

By SethBling [Not For Sale]

Lifelike Painting

1



Artifact



When Lifelike Painting enters the battlefield, draw a card.

1, ♣: Add ♠, ♣, or ♡.

325/360 C
MAR • EN NINTENDO/EDI ON DEVIANART

By SethBling [Not For Sale]

Gold Trophy

1



Artifact



When Gold Trophy enters the battlefield, draw a card.

1, ♣: Add *, ♠, or ♣.

320/360 C
MAR • EN SHADOWSCARKNIGHT ON DEVIANART

By SethBling [Not For Sale]

Sweet Sweet Canyon



Land



Sweet Sweet Canyon enters the battlefield tapped.

♣: Add ♠ or ♡.

Cycling ♠ (♠, Discard this card: Draw a card.)

354/360 U
MAR • EN NINTENDO

By SethBling [Not For Sale]

Lost Pools



Land



Lost Pools enters the battlefield tapped.

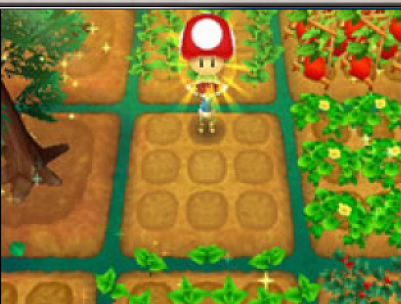
♣: Add ♠ or ♣.

Cycling ♠ (♠, Discard this card: Draw a card.)

346/360 U
MAR • EN NINTENDO

By SethBling [Not For Sale]

Seasonal Farmland



Land



Seasonal Farmland enters the battlefield tapped.

♣: Add * or ♠.

Cycling * (*, Discard this card: Draw a card.)

353/360 U
MAR • EN STORY OF SEASONS

By SethBling [Not For Sale]

Kingdom's Groves



Land



Kingdom's Groves enters the battlefield tapped.

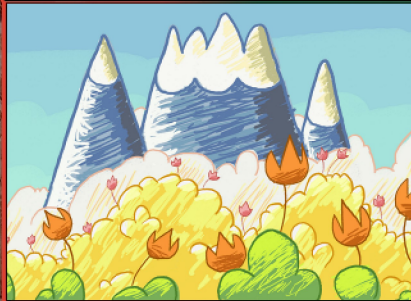
♣: Add ♠ or *.

Cycling ♠ (♠, Discard this card: Draw a card.)

344/360 U
MAR • EN NINTENDO

By SethBling [Not For Sale]

Downslope Thicket



Land

Downslope Thicket enters the battlefield tapped.

☞: Add ☞ or ♣.

Cycling ♣ (♣, Discard this card: Draw a card.)

341/360 U
MAR • EN • NINTENDO

By SethBling [Not For Sale]

Ukiki



Creature — Monkey Rogue

Haste

When Ukiki enters the battlefield, you may attach target Aura or Equipment to it. (Control of that permanent doesn't change.)

"I think it looks better on me than it does on you! Eeeee! Kee keeeee!"

3/2

184/360 U
MAR • EN • @BDAARTIST

By SethBling [Not For Sale]

Bonetail



Legendary Creature — Dragon Skeleton

Flying

Sacrifice three creatures: Return Bonetail from your graveyard to the battlefield. Activate only as a sorcery.

Spawn (1, Exile this card from your hand: Create a 1/1 black Minion creature token. You may cast this card later from exile. Spawn only as a sorcery.)

5/2

235/360 R
MAR • EN • NINTENDO

By SethBling [Not For Sale]

Meowser



Legendary Creature — Cat Koopa

First strike, trample, haste

Cat-astrophe awaits!

6/6

265/360 R
MAR • EN • IOELCHAN ON DEVIANART

By SethBling [Not For Sale]

Super Bell



Enchantment — Aura

Enchant creature

Enchanted creature gets +2/+0 and has first strike and haste.

Throwing on a cat costume and prancing around the place? It's more common than you'd think.

284/360 C
MAR • EN • HAYCHEL ON DEVIANART

By SethBling [Not For Sale]

Artistic Obsession



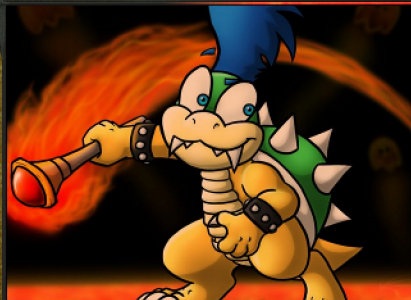
Sorcery

Exile a card from your hand, the top card of your library, and a card in your graveyard in a face-down pile. Shuffle that pile and put those cards onto the battlefield face down. (They're 2/2 creatures. You may look at them at any time.)

232/360 R
MAR • EN • @LUNARYHUES

By SethBling [Not For Sale]

Larry Koopa



Legendary Creature — Koopa

Whenever you sacrifice a permanent, Larry Koopa deals 1 damage to any target.

Spawn (1, Exile this card from your hand: Create a 1/1 black Minion creature token. You may cast this card later from exile. Spawn only as a sorcery.)

4/2

262/360 R
MAR • EN • METALLICUMBRAGE ON DEVIANART By SethBling [Not For Sale]

Mechawiggler



Artifact Creature — Insect Construct

Trample

Whenever you draw a card, Mechawiggler gets +2/+2 until end of turn.

"I always said we're doomed. Nobody ever listens to me!"
—New Donk City Resident

2/2

204/360 U
MAR • EN • BREWSTERKOOPA435 ON DEVIANART By SethBling [Not For Sale]

Goomboss



Legendary Creature — Fungus Noble

When Goomboss enters the battlefield or dies, create a 1/1 black Minion creature token.

Spawn (1, Exile this card from your hand: Create a 1/1 black Minion creature token. You may cast this card later from exile. Spawn only as a sorcery.)

2/2

199/360 U
MAR • EN • LOUVI ON DEVIANART

By SethBling [Not For Sale]

Toad's House

1



Artifact

Publish (If there are four or more card types among permanents you control, you're a maker for the rest of the game.)
As long as you're a maker, creatures you control get +1/+1.

"Hello! You found my shop of strange and wonderful things!" —Toad

222/360 U
MAR • EN SAB64 ON DEVIANART By SethBling [Not For Sale]

Professor E. Gadd

2



Legendary Creature — Human Artificer

1: Look at target face-down creature.
2: Destroy target face-down creature. Its controller draws a card.

1/3

272/360 R
MAR • EN NINTENDO By SethBling [Not For Sale]

Antasma, Dream Drinker

2



Legendary Creature — Bat Horror

Flash
Flying, lifelink
Each opponent can't draw more than one card each turn.

2/2

230/360 U
MAR • EN SQUADALA33 ON DEVIANART By SethBling [Not For Sale]

Cataquack

2



Artifact Creature — Bird Construct

Whenever Cataquack deals combat damage to a player, you may sacrifice it. When you do, destroy target artifact or enchantment that player controls.

3/3

243/360 C
MAR • EN INDIGOWILDCAT ON DEVIANART By SethBling [Not For Sale]

Fore!

2



Sorcery

Choose one —
• Destroy target artifact.
• Destroy target enchantment.
• Destroy target creature with flying.

194/360 C
MAR • EN NINTENDO By SethBling [Not For Sale]

Archivist Toadette

2



Creature — Fungus Advisor

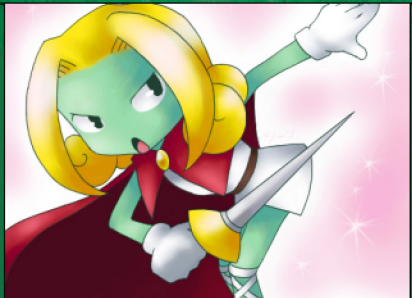
Whenever Archivist Toadette or another creature enters the battlefield under your control, you gain 1 life.
Super (When this creature dies, if it was enchanted, return it to the battlefield under its owner's control.)

2/2

231/360 U
MAR • EN TIGERSONALEX ON TUMBLR By SethBling [Not For Sale]

Prince Peasley

2



Legendary Creature — Plant Noble

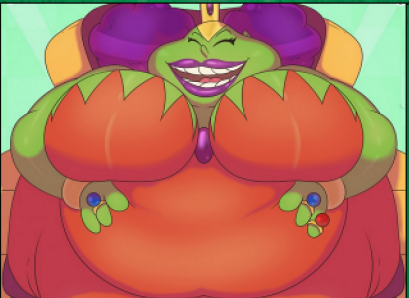
Whenever an Aura becomes attached to Prince Peasley, he fights up to one target creature an opponent controls.
Super (When this creature dies, if it was enchanted, return it to the battlefield under its owner's control.)

3/3

215/360 U
MAR • EN STARDROIDDEAN ON DEVIANART By SethBling [Not For Sale]

Queen Bean

2



Legendary Creature — Plant Noble

As long as Queen Bean is enchanted, she gets +1/+1 and has trample.
Super (When this creature dies, if it was enchanted, return it to the battlefield under its owner's control.)

1/1

216/360 U
MAR • EN CRESCENT-BLUE-ZERO By SethBling [Not For Sale]

Rollodillo Cloak

2



Enchantment — Aura

Enchant creature
Enchanted creature gets +2/+2 and has trample and lifelink.
"Rolling up the galaxy! What a truly noble endeavor!"
—The King of All Cosmos

277/360 U
MAR • EN NINTENDO By SethBling [Not For Sale]

Broozzer

1



Creature — Spirit

Whenever a creature you control with power 2 becomes tapped, target opponent loses 1 life.

Spook (You may cast this card face down as a 2/2 creature for 3. When this creature dies while face-down, exile it. You may cast it later from exile for its spook cost.)

2/1

240/360 U
MAR • EN RAVINGBOY ON TUMBLR

By SethBling [Not For Sale]

Whomp

2



Artifact Creature — Golem Minion

1/4

332/360 C
MAR • EN LORENZO MENDOZA

By SethBling [Not For Sale]

Fawful, Dark Keeper

3



Legendary Creature — Plant Warlock

Flying

: Target creature token has base power and toughness 5/5 until end of turn.

Spawn (1, Exile this card from your hand: Create a 1/1 black Minion creature token. You may cast this card later from exile. Spawn only as a sorcery.)

1/2

250/360 R
MAR • EN NEOCYANIA ON DEVIANTART

By SethBling [Not For Sale]

Colorful Platforms

1



Enchantment — Aura

Enchant land you control

Publish (If there are four or more card types among permanents you control, you're a maker for the rest of the game.)

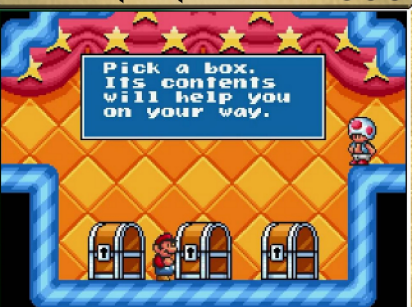
Whenever enchanted land is tapped for mana, add * or . If you're a maker, create a Treasure token instead.

189/360 U
MAR • EN PENCIL EQUIPPED ON ARTISTATION

By SethBling [Not For Sale]

Toad Shopkeep

3



Creature — Fungus

When Toad Shopkeep enters the battlefield, create three Treasure tokens. (They're artifacts with "♣, Sacrifice this artifact: Add one mana of any color.")

♣, ♣, Sacrifice a Treasure: Draw a card.

2/2

287/360 R
MAR • EN NINTENDO

By SethBling [Not For Sale]

Mii Racer

1



Creature — Human Avatar

Mii Racer gets +1/+1 for each Vehicle you control.

You call it vanity. I call it class.

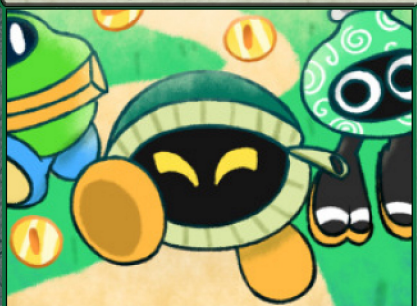
2/2

302/360 U
MAR • EN NINTENDO

By SethBling [Not For Sale]

Moneybag

1



Artifact Creature — Construct Minion

When Moneybag enters the battlefield, create a Treasure token. (It's an artifact with "♣, Sacrifice this artifact: Add one mana of any color.")

Behold the power of the purse.

1/1

206/360 C
MAR • EN LINKANDDORF ON TUMBLR

By SethBling [Not For Sale]

Coin Coffer

1



Artifact Creature — Construct Minion

*, ♣: Create a Treasure token. (It's an artifact with "♣, Sacrifice this artifact: Add one mana of any color.")

A dazzling smile and a heart of gold.

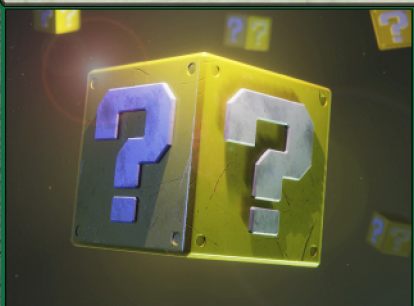
2/2

188/360 C
MAR • EN VERTELL ON DEVIANTART

By SethBling [Not For Sale]

Mystery Block

1



Artifact — Treasure

♣, Sacrifice Mystery Block: Add one mana of any color.

1, ♣, Sacrifice a Treasure: Draw a card.

208/360 U
MAR • EN DAVIDE PICARDI

By SethBling [Not For Sale]

Eerie

1



Creature — Dinosaur Spirit

Creature spells you cast with power 2 cost 1 less to cast.

Spook (You may cast this card face down as a 2/2 creature for 3. When this creature dies while face-down, exile it. You may cast it later from exile for its spook cost.)

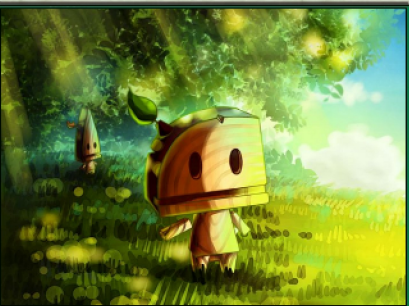
2/3

249/360 U
MAR • EN • TUTAN-KOOPA ON DEVIANART

By SethBling [Not For Sale]

Whittle

1



Creature — Treefolk

Vigilance

☞: Add .

“Our people. Brave.”

2/2

227/360 C
MAR • EN • AEVIANN ON DEVIANART

By SethBling [Not For Sale]

Petey Piranha

2



Legendary Creature — Plant

3 Hits (This creature enters the battlefield with three +1/+1 counters on it. If damage would be dealt to it while it has a +1/+1 counter on it, remove one instead.)

Petey Piranha gets +1/+1 for each counter on him.

0/0

210/360 R
MAR • EN • BLARGEN69 ON DEVIANART

By SethBling [Not For Sale]

Warp Whistle

4



Artifact

XXXX, ☞, Sacrifice Warp Whistle: Take X extra turns after this one.

You cheated not only the game, but yourself.

331/360 M
MAR • EN • COLLEGEHUMOR

By SethBling [Not For Sale]

Count Bleck

2



Legendary Planeswalker — Bleck

At the beginning of each end step, if a creature died this turn, scry 1.

+1: Create a 1/1 black Minion creature token.

-6: Destroy all creatures.

4

296/360 R
MAR • EN • DI-MIKA ON DEVIANART

By SethBling [Not For Sale]

Super Team

7



Artifact Creature — Construct

When Super Team enters the battlefield, create four Treasure tokens. (They're artifacts with “☞, Sacrifice this artifact: Add one mana of any color.”)

Treasures you control are 1/1 creatures with haste in addition to their other types.

4/7

330/360 R
MAR • EN • NINTENDO

By SethBling [Not For Sale]

The Duke

1



Artifact — Vehicle

Menace

Crew 2 (Tap any number of creatures you control with total power 2 or greater: This Vehicle becomes an artifact creature until end of turn.)

4/3

248/360 C
MAR • EN • PANCASANDHALIBUT ON DEVIANART

By SethBling [Not For Sale]

Star World

5



Enchantment

This spell costs 1 less to cast for each card type among permanents you control.

You may cast permanent spells as though they had flash.

Untap all lands you control during each other player's untap step.

283/360 R
MAR • EN • VERONICA FISH

By SethBling [Not For Sale]

Shroom Grocery

2



Enchantment

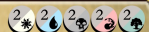
☞, Sacrifice an enchantment or two Treasures: Return target enchantment card from your graveyard to your hand.

“That Toad runs this shop. He buys, sells and checks items.”
—Goombario

303/360 U
MAR • EN • NINTENDO

By SethBling [Not For Sale]

Puzzle Level



Enchantment

At the beginning of your upkeep, if you control a Minion token, a Vehicle, a creature with super, a face-down creature, and you're a maker, you win the game. *(This ability doesn't make you a maker.)*

Level Code: 34BB-0000-01C4-4CF8

273/360 M
MAR • EN • NINTENDO & SEANHIP2

By SethBling [Not For Sale]

Bubble



Enchantment

Flash

When Bubble enters the battlefield, you may exile another target permanent you own, then return it to the battlefield under your control.

You have hexproof.

241/360 U
MAR • EN • NINTENDO

By SethBling [Not For Sale]

Tweester Trickery



Instant

Exile target nonland permanent. Return that card to the battlefield under its owner's control at the beginning of the next end step.

The winds in the desert have a mind of their own.

309/360 C
MAR • EN • ISPARROW ON DEVIANART

By SethBling [Not For Sale]

Top Secret Area



Legendary Land

When Top Secret Area enters the battlefield, look at the top five cards of your library. Reveal up to one Aura card or card with super from among them and put it on top of your library and the rest on the bottom in a random order.

☞: Add ♣.

356/360 U
MAR • EN • SYLVAIN SARRAILH

By SethBling [Not For Sale]

Bowser's Castle



Legendary Land

When Bowser's Castle enters the battlefield, look at the top five cards of your library. Reveal up to one card with spawn from among them and put it on top of your library and the rest on the bottom in a random order.

☞: Add ♣.

336/360 U
MAR • EN • RYAN SHU

By SethBling [Not For Sale]

Big Boo's Haunt



Legendary Land

When Big Boo's Haunt enters the battlefield, look at the top five cards of your library. Reveal up to one card with spook from among them and put it on top of your library and the rest on the bottom in a random order.

☞: Add ♣.

335/360 U
MAR • EN • NINTENDO

By SethBling [Not For Sale]

Yoshi Circuit



Legendary Land

When Yoshi Circuit enters the battlefield, look at the top five cards of your library. Reveal up to one Vehicle card from among them and put it on top of your library and the rest on the bottom in a random order.

☞: Add ♣.

359/360 U
MAR • EN • THRANEK ON STEAM WORKSHOP

By SethBling [Not For Sale]

Nintendo Headquarters



Legendary Land

When Nintendo Headquarters enters the battlefield, look at the top five cards of your library. Reveal up to one card with publish from among them and put it on top of your library and the rest on the bottom in a random order.

☞: Add ♣.

350/360 U
MAR • EN • XANDAY

By SethBling [Not For Sale]

Grand Prix



(As this Saga enters and after your draw step, add a lore counter. Sacrifice after III.)

I

You may put a Vehicle card from your hand onto the battlefield. It gains haste until end of turn.

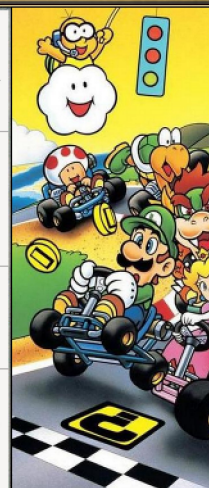
II

Any number of target Vehicles become artifact creatures until end of turn.

III

Create three Treasure tokens. *(They're artifacts with "☞, Sacrifice this artifact: Add one mana of any color.")*

Enchantment — Saga

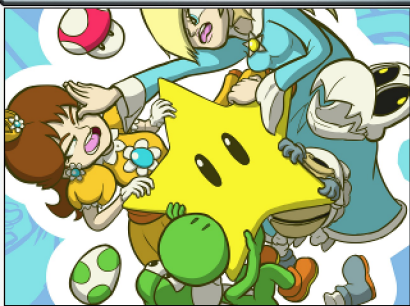


256/360 R
MAR • EN • NINTENDO

By SethBling [Not For Sale]

Star of the Party

2



Artifact

At the beginning of your upkeep, draw a card.

2 : Gain control of Star of the Party. Any player may activate this ability but only as a sorcery.

329/360 U
MAR • EN • THECITIVERSE ON DEVIANART

By SethBling [Not For Sale]

Double Team

1



Enchantment — Aura

Enchant creature

Whenever enchanted creature attacks, up to two target creatures each get +1/+1 and gain deathtouch until end of turn.

Spawn (1, *Exile this card from your hand: Create a 1/1 black Minion creature token. You may cast this card later from exile. Spawn only as a sorcery.*)

297/360 C
MAR • EN • NINTENDO

By SethBling [Not For Sale]

Prehistoric Tyrant

3



Creature — Dinosaur

Trample

Prehistoric Tyrant can't attack or block unless you control another creature with power 3 or greater.

Giant teeth, tiny brain.

6/6

214/360 C
MAR • EN • VANTASY ON DEVIANART

By SethBling [Not For Sale]

Aim High

1



Instant

Untap target creature. It gets +2/+2 and gains reach until end of turn.

"Yoshi!"
—Yoshi

186/360 C
MAR • EN • NINTENDO

By SethBling [Not For Sale]

Uncaged Fury

2



Instant

Target creature gets +1/+1 and gains double strike until end of turn.

"BWAHAHAHA! You finally made it! Just in time for me to stomp you into space bits!"
—Bowser, King Koopa

185/360 C
MAR • EN • WALKINGMELONSAAA ON DEVIANART

By SethBling [Not For Sale]

Double Cherry

1



Enchantment — Aura

Enchant creature

Enchanted creature has double strike and can block an additional creature each combat.

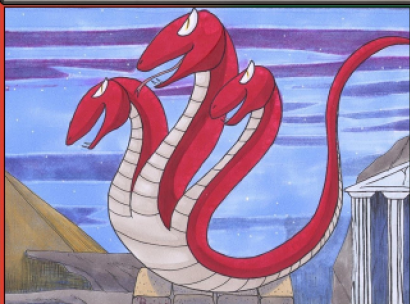
Double the treasure; double the run!

247/360 U
MAR • EN • BOXBIRD ON DEVIANART

By SethBling [Not For Sale]

Tryclyde

1



Creature — Hydra

3 Hits (This creature enters the battlefield with three +1/+1 counters on it. If damage would be dealt to it while it has a +1/+1 counter on it, remove one instead.)

2 : Tryclyde fights target creature you don't control.

0/0

308/360 U
MAR • EN • ETHETHEGUY

By SethBling [Not For Sale]

Galoomba

1



Creature — Fungus Minion

3/2

196/360 C
MAR • EN • KITTYNINIAFISH ON DEVIANART

By SethBling [Not For Sale]

Wart the Slippery

2



Legendary Creature — Frog Noble

Hexproof

He is the most mischievous of all in the world of dreams.

4/3

310/360 U
MAR • EN • MAST3R-RAINBOW ON DEVIANART

By SethBling [Not For Sale]