

Super Mario

1 2 3 4



Legendary Creature — Human Plumber

Haste

As Super Mario enters the battlefield, if you cast him, create a green Aura enchantment token named Mushroom Power attached to him. It has enchant creature and "Enchanted creature gets +2/+2."

Super (When this creature dies, if it was enchanted, return it to the battlefield under its owner's control.)

3/3

285/360 M
MAR • EN • GTS ON DEVIANART

By SethBling [Not For Sale]

Parade Kart

5 6 7 8



Artifact — Vehicle

At the beginning of your upkeep, if you're in pursuit, you gain 1 life and draw a card. (You're in pursuit if an opponent controls more creatures than you.)

3 4 5: Each Vehicle you control becomes an artifact creature until end of turn.

Crew 3

5/5

268/360 M
MAR • EN • NINTENDO

By SethBling [Not For Sale]

Big Boo

3 4 5



Creature — Spirit

Flying, trample

Big Boo can't attack or block as long as an opponent controls an untapped creature.

1 2 3: Target creature attacks this turn if able.

5/5

095/360 U
MAR • EN • CROTDWAG ON DEVIANART

By SethBling [Not For Sale]

Bowser, King Koopa

2 3 4 5



Legendary Creature — Koopa Noble

1 2: Bowser gets +2/+0 until end of turn.

3 4 5: Sacrifice another creature: Bowser gets +4/+4 and gains trample until end of turn. Activate only once each turn.

Spawn (1, Exile this card from your hand: Create a 1/1 black Minion creature token. You may cast this card later from exile. Spawn only as a sorcery.)

4/4

259/360 M
MAR • EN • IOSHUMMANA ON DEVIANART

By SethBling [Not For Sale]

Valley of Bowser



Land

Valley of Bowser enters the battlefield tapped.

2 3 4: Add 3, 2, or 1.

357/360 U
MAR • EN • MARIANAFM

By SethBling [Not For Sale]

Course World



Land

Course World enters the battlefield tapped.

2 3 4: Add 3, 2, or 1.

338/360 U
MAR • EN • NINTENDO

By SethBling [Not For Sale]

Mario Kart Stadium



Land

Mario Kart Stadium enters the battlefield tapped.

2 3 4: Add 3, 2, or 1.

348/360 U
MAR • EN • NINTENDO

By SethBling [Not For Sale]

Luigi's Mansion



Land

Luigi's Mansion enters the battlefield tapped.

2 3 4: Add 3, 2, or 1.

347/360 U
MAR • EN • ORIOLO

By SethBling [Not For Sale]

Mushroom Kingdom



Land

Mushroom Kingdom enters the battlefield tapped.

2 3 4: Add 3, 2, or 1.

349/360 U
MAR • EN • NINTENDO

By SethBling [Not For Sale]

Goomba



Creature — Fungus Minion



2/1

197/360 C
MAR • EN • EVANK7501 ON FLICKR

By SethBling [Not For Sale]

Angry Sun



Creature — Elemental



Flying

Angry Sun attacks each combat if able.

It was once commonly believed that the sun was thousands of miles wide and millions of miles away.

2/2

158/360 U
MAR • EN • GARYSTORKAMP ON DEVIANART

By SethBling [Not For Sale]

Reznor



Creature — Dinosaur



4 Hits (This creature enters the battlefield with four +1/+1 counters on it. If damage would be dealt to it while it has a +1/+1 counter on it, remove one instead.)

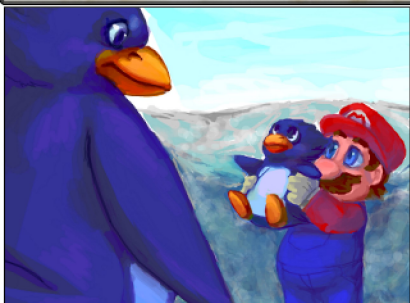
1: Reznor gets +2/+0 until end of turn.

0/0

276/360 U
MAR • EN • BLAZETBW ON DEVIANART

By SethBling [Not For Sale]

Tuxie



Creature — Bird



: Another target creature gains lifelink until end of turn.

"Egad! My baby!! Have you seen my baby???"
—Mother Penguin

1/2

043/360 C
MAR • EN • LOILERGATOR ON DEVIANART

By SethBling [Not For Sale]

Mushroom Power



Enchantment — Aura



Enchant creature

Enchanted creature gets +2/+2.

207/360 C
MAR • EN • NINTENDO

By SethBling [Not For Sale]

Feather Power



Enchantment — Aura



Enchant creature

Enchanted creature gets +1/+1 and has flying.

No feeling compares to the power in your step and the wind in your cape.

008/360 C
MAR • EN • LEODIAMONDBLOG

By SethBling [Not For Sale]

Blue Shell



Sorcery



If you're in pursuit, you may cast this spell as though it had flash. (You're in pursuit if an opponent controls more creatures than you.)

Destroy each creature with the greatest power.

The first shall be last, and the last, first.

233/360 U
MAR • EN • SCOTT JOHNSON

By SethBling [Not For Sale]

Poison Bog



Land



Poison Bog enters the battlefield tapped.

When Poison Bog enters the battlefield, scry 1.

: Add or .

351/360 U
MAR • EN • NINTENDO

By SethBling [Not For Sale]

Forest of Illusion



Land



Forest of Illusion enters the battlefield tapped.

When Forest of Illusion enters the battlefield, scry 1.

: Add or .

342/360 U
MAR • EN • LEODIAMONDBLOG

By SethBling [Not For Sale]

Last Resort Hotel



Land

Last Resort Hotel enters the battlefield tapped.
When Last Resort Hotel enters the battlefield, scry 1.
☞: Add ♠ or ♣.

345/360 U
MAR • EN NINTENDO

By SethBling [Not For Sale]

Wario Stadium



Land

Wario Stadium enters the battlefield tapped.
When Wario Stadium enters the battlefield, scry 1.
☞: Add * or ♣.

358/360 U
MAR • EN NINTENDO

By SethBling [Not For Sale]

Dinosaur Land



Land

Dinosaur Land enters the battlefield tapped.
When Dinosaur Land enters the battlefield, scry 1.
☞: Add ♣ or *.

339/360 U
MAR • EN DANIEL BOGNI

By SethBling [Not For Sale]

Grumble Volcano



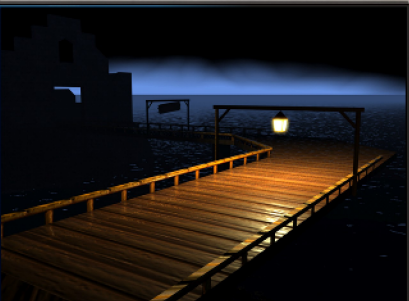
Land

Grumble Volcano enters the battlefield tapped.
When Grumble Volcano enters the battlefield, scry 1.
☞: Add ♣ or ♣.

343/360 U
MAR • EN DAVE BOLTON

By SethBling [Not For Sale]

Banshee Boardwalk



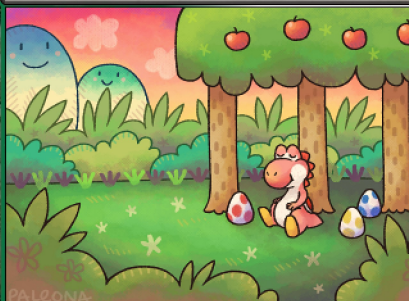
Land

Banshee Boardwalk enters the battlefield tapped.
When Banshee Boardwalk enters the battlefield, scry 1.
☞: Add ♠ or ♣.

334/360 U
MAR • EN @PEARDIAN

By SethBling [Not For Sale]

Yoshi's House



Land

Yoshi's House enters the battlefield tapped.
When Yoshi's House enters the battlefield, scry 1.
☞: Add ♣ or *.

360/360 U
MAR • EN PALEONA ON DEVIANART

By SethBling [Not For Sale]

DK Mountain



Land

DK Mountain enters the battlefield tapped.
When DK Mountain enters the battlefield, scry 1.
☞: Add ♣ or ♣.

340/360 U
MAR • EN NINTENDO

By SethBling [Not For Sale]

Rotate

2 ♣



Instant

Simultaneously untap all tapped permanents and tap all untapped permanents.
Draw a card.
It's a matter of perspective.

084/360 U
MAR • EN NINTENDO

By SethBling [Not For Sale]

Flower Power

2 ♣



Enchantment — Aura

Enchant creature
Enchanted creature has "2, ☞: This creature deals 2 damage divided as you choose among one or two targets."

161/360 U
MAR • EN WUZTAJYZA

By SethBling [Not For Sale]

Rainbow Road



Land

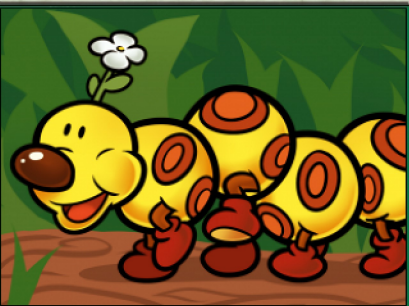
☞: Add ♦.

☞: Add one mana of any color.
Activate only if you control four or more lands.

352/360 R
MAR • EN SAMUKASME14 ON DEVIANART

By SethBling [Not For Sale]

Wiggler



Creature — Insect Minion

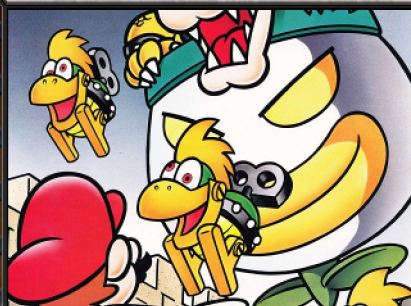
Whenever Wiggler is dealt damage, put a +1/+1 counter on it.
As long as Wiggler has a +1/+1 counter on it, it attacks each combat if able.

3/3

228/360 C
MAR • EN DRAGOART

By SethBling [Not For Sale]

Koopa Clown Car



Artifact — Vehicle

Flying

Whenever Koopa Clown Car attacks, you lose 2 life and create two tapped 1/1 black Minion creature tokens.

Crew 2 (Tap any number of creatures you control with total power 2 or greater: This Vehicle becomes an artifact creature until end of turn.)

2/3

117/360 U
MAR • EN NINTENDO

By SethBling [Not For Sale]

Form of Bullet Bill



Instant

This spell costs 2 less to cast if you're in pursuit. (You're in pursuit if an opponent controls more creatures than you.)

Until end of turn, target creature or Vehicle you control gets +1/+1 for each creature you don't control. Creatures you don't control get -1/-1 until end of turn.

252/360 U
MAR • EN NINTENDO

By SethBling [Not For Sale]

Shy Guy



Creature — Minion

☞: Add ♣ or ♠.

"Once smitten, twice shy..."

1/1

217/360 C
MAR • EN PIRANHARTIST ON DEVIANART

By SethBling [Not For Sale]

Lakitu



Creature — Koopa Minion

Flying

At the beginning of your upkeep, you lose 1 life and create a 1/1 black Minion creature token.

The princess's umbrella is far from a mere fashion accessory.

1/1

118/360 R
MAR • EN NESLUG ON DEVIANART

By SethBling [Not For Sale]

Kidnap



Sorcery

Gain control of target creature until end of turn. Tap it.

Bowser really ought to find a new occupation.

166/360 U
MAR • EN ESTIVADOR ON DEVIANART

By SethBling [Not For Sale]

Princess Rosalina



Legendary Planeswalker — Rosalina

- +1** : Up to one target creature gains flying, vigilance, lifelink and indestructible until end of turn.
- 2** : Exile target creature until Princess Rosalina leaves the battlefield.
- 7** : You get an emblem with "Elementals you control have indestructible." Create seven 1/1 white Elemental creature tokens with flying.

5

024/360 M
MAR • EN SIRTIEFLING ON DEVIANART

By SethBling [Not For Sale]

Big World



Enchantment

Minions you control get +3/+3.

Spawn (1, Exile this card from your hand: Create a 1/1 black Minion creature token. You may cast this card later from exile. Spawn only as a sorcery.)

187/360 R
MAR • EN ESPENARTMAN ON ARTSTATION

By SethBling [Not For Sale]



Flower

Sorcery

Search your library for a basic Forest or Plains card, reveal it, put it into your hand, then shuffle.

By SethBling [Not For Sale]
BEARWITHGLASSES ON DEVIANART



Fire

Instant

Fire deals 2 damage divided as you choose among one or two targets.

THE360 U
MAR • EN • DER-RUKO ON DEVIANART



Blooper

2

Creature — Squid

Flash

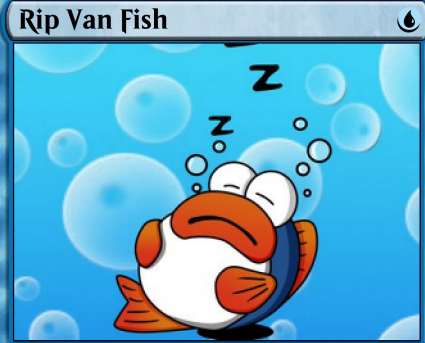
When Blooper enters the battlefield, creatures your opponents control get -2/-0 until end of turn.

“Stinkin’ inkin’s stopped my blinkin’!”
—Wario the Sightless

048/360 U
MAR • EN • NEOCYANIA ON DEVIANART

By SethBling [Not For Sale]

2/2



Rip Van Fish

1

Creature — Fish

Rip Van Fish enters the battlefield tapped and doesn’t untap during your untap step.

Whenever an opponent casts a spell, untap Rip Van Fish.

The sleeper must awaken.

082/360 U
MAR • EN • ATMA94 ON DEVIANART

By SethBling [Not For Sale]

2/2



Piranha Plant

1

Creature — Plant Minion

Defender

2, 2: Piranha Plant deals 2 damage to target opponent.

A fiery spirit and a hungry soul.

212/360 C
MAR • EN • IOSHSUMANA ON DEVIANART

By SethBling [Not For Sale]

2/1



Dr. Mario

3

Legendary Creature — Human Cleric

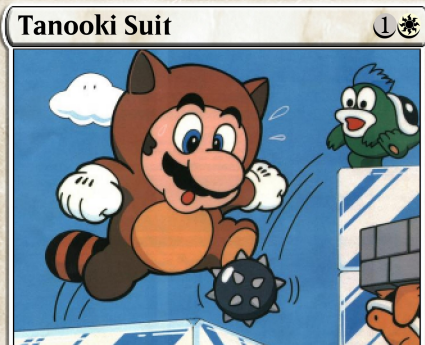
At the beginning of your upkeep, you may exile three cards that share a color from a single graveyard. When you do, destroy target creature or enchantment.

Super (When this creature dies, if it was enchanted, return it to the battlefield under its owner’s control.)

005/360 R
MAR • EN • EARTHB-KUN ON DEVIANART

By SethBling [Not For Sale]

5/5



Tanooki Suit

1

Enchantment — Aura

Enchant creature

Enchanted creature gets +1/+1 and has flying.

Enchanted creature has “2: This creature gains indestructible until end of turn. Tap it and remove it from combat.”

037/360 C
MAR • EN • NINTENDO POWER

By SethBling [Not For Sale]



Dry Bones

1

Creature — Skeleton Minion

At the beginning of your upkeep, you may pay 2 life. If you do, return Dry Bones from your graveyard to your hand.

These bones don’t know the meaning of the word “quit.” Or any other words.

107/360 U
MAR • EN • RIBERA ON DEVIANART

By SethBling [Not For Sale]

2/1



Frog Suit

1

Enchantment — Aura

Enchant creature

Enchanted creature gets +1/+1.

1: Enchanted creature can’t be blocked this turn.

“Blub-a blub! BLUB-bl-blub!”

195/360 C
MAR • EN • NINTENDO POWER

By SethBling [Not For Sale]



Hammer Suit

3

Enchantment — Aura

Enchant creature

Whenever enchanted creature attacks, it deals 2 damage to any target.

No one knows who threw the first hammer, but I intend to throw the last.

163/360 U
MAR • EN • MRMIREZ ON DEVIANART

By SethBling [Not For Sale]

Dry Bowser

3



Legendary Creature — Skeleton Koopa

1: Dry Bowser gets +2/+0 until end of turn.

At the beginning of your upkeep, you may pay 2 life. If you do, return Dry Bowser from your graveyard to your hand.

4/2

108/360 U
MAR • EN COKSI ON DEVIANTART

By SethBling [Not For Sale]

Wario, Greed Incarnate

3



Legendary Creature — Human Rogue

Menace

2: Gain control of target artifact or creature an opponent controls until end of turn. Untap it. It gains haste until end of turn. Activate only as a sorcery.

“WAH!!”

4/3

291/360 R
MAR • EN IMSON ON DEVIANTART

By SethBling [Not For Sale]

Undodog

3



Creature — Dog Wizard

When Undodog enters the battlefield, return target instant or sorcery card from your graveyard to your hand.

There's no mistake so big it can't be undone by Undodog!

1/3

091/360 U
MAR • EN KITTYNINIAFISH ON DEVIANTART

By SethBling [Not For Sale]

Boohemoth

3



Creature — Spirit

Indestructible

Boohemoth attacks each combat if able.

Boohemoth gets -1/-0 for each untapped creature an opponent controls.

5/5

101/360 U
MAR • EN HOOKSNFANGS

By SethBling [Not For Sale]

Comet Observatory



Land

, Sacrifice Comet Observatory: Search your library for a basic land card, put it onto the battlefield tapped, then shuffle.

337/360 C
MAR • EN ROSALINA-LUMA ON DEVIANTART

By SethBling [Not For Sale]

Expendable Army

3



Instant

Create X 1/1 black Minion creature tokens.

*“See what you’re up against, Mario?”
—Bowser, King Koopa*

192/360 U
MAR • EN EMORTAL982 ON DEVIANTART

By SethBling [Not For Sale]

POW Block

1



Sorcery

POW Block deals 2 damage to each creature without flying.

*“Flips shell enemies and inflicts 2 damage points on all enemies.”
—Paper Mario*

173/360 U
MAR • EN NINTENDO

By SethBling [Not For Sale]

Giant Banana

1



Artifact

Flash

, Sacrifice Giant Banana: Giant Banana deals 5 damage to target attacking creature.

319/360 C
MAR • EN NINTENDO

By SethBling [Not For Sale]

Counterspook

1



Instant

Counter target spell.

Spook 1 (You may cast this card face down as a 2/2 creature for 3. When it dies while face-down, exile it. You may cast it later from exile for its spook cost.)

056/360 C
MAR • EN JURASSICZALAR ON DEVIANTART

By SethBling [Not For Sale]

[illegible]

The image shows a custom Magic: The Gathering card named "Cappy". At the top, the name "Cappy" is written in a stylized font on a light brown banner. To the right of the name is a small circular icon containing two black eyes. Below the name is a large illustration of Mario's head from the chest up, wearing his iconic red cap and having a mischievous expression with wide eyes and a slight grin. Below the illustration is another light brown banner with the text "Legendary Artifact — Equipment" in a bold, serif font. To the right of this text is a small yellow icon of a keyhole. The main body of the card contains the following text in a serif font: "Equipped creature has “2 ♠, ♣, Unattach Cappy: Gain control of target creature until end of turn. Untap that creature. It gains haste until end of turn. Activate only as a sorcery.” Equip 2". At the bottom left corner, there is small text indicating the card's rarity and source: "148/360 R MAR • EN LC-HOLY ON DEVIANTART". At the bottom right corner, there is a credit line: "By SethBling [Not For Sale]".

Peach's Crown 2



Artifact

1, ♣: Add * ♠.

327/360 C
MAR • EN ♡ BRITTANY MURPHY

By SethBling [Not For Sale]

Bowser's Wristband 2



Artifact

1, ♠: Add 🐉🔥.

316/360 C
MAR • EN 🎲 HYBRIDMINK ON DEVIANART

By SethBling [Not For Sale]

Detailed description: This is a custom Magic: The Gathering card. The top border is light blue with a darker blue patterned outer edge. The title 'Bowser's Wristband' is in a bold, black, sans-serif font, followed by a blue-bordered circle containing the number '2'. The central image is a close-up of Bowser's right hand, which is orange and scaly, wearing a dark blue wristband with five silver spikes. The bottom section has a light blue background with a darker blue patterned border. It features the word 'Artifact' in a bold, black, sans-serif font, followed by a blue-bordered circle containing a small icon of a wristband. Below this is a large white rectangular area with the text '1, ♠: Add 🐉🔥.' in a black, sans-serif font. The bottom border is light blue with a darker blue patterned outer edge. It contains the text '316/360 C', 'MAR • EN', a small red and white icon, 'HYBRIDMINK ON DEVIANART', and 'By SethBling [Not For Sale]'.

The image shows a custom Magic: The Gathering card. The top border is grey with the title 'Yoshi's Shoe' in a bold, black, sans-serif font on the left and a small grey circle containing the number '2' on the right. The main illustration area has a light green background. It depicts a green Yoshi-like creature from the waist down, wearing a white diaper with red polka dots. The creature is holding a large, orange, cartoonish shoe with a yellow sole in its right hand. Below the illustration is a grey border containing the word 'Artifact' in a bold, black, sans-serif font on the left and a small grey circle containing a black icon of a shoe on the right. The bottom section of the card is a large, light blue-grey area with a subtle, repeating pattern of the Yoshi creature's head. In this section, the text '1, ♠: Add 🌳*.' is written in a black, sans-serif font. At the very bottom of the image, outside the card's border, is the text '333/360 C MAR • EN GREENYOSHI25 ON DEVIANART' on the left and 'By SethBling [Not For Sale]' on the right.

Donkey Kong's Tie 2



Artifact

1, ♠: Add 2♣.

318/360 C
MAR • EN THEPIXELWORKER ON DEVIANART

By SethBling [Not For Sale]

King Boo's Crown

2



Artifact

1, ♣: Add ♠♣.

323/360 C
MAR • EN • ZIEGHOST ON DEVIANART

By SethBling [Not For Sale]

Ice Power

♠



Enchantment — Aura

Enchant creature
Whenever enchanted creature becomes tapped, tap target creature.
What's cooler than being cool?

299/360 C
MAR • EN • NINTENDO

By SethBling [Not For Sale]

Toad

1 ♣



Creature — Fungus

Super (When this creature dies, if it was enchanted, return it to the battlefield under its owner's control.)
Never in the spotlight, yet always shines bright.

2/2

305/360 C
MAR • EN • TOSHUA DUNLOP

By SethBling [Not For Sale]

Kamek, Arch-Magikoopa

3 ♠♣



Legendary Creature — Koopa Wizard

Flying
When Kamek enters the battlefield, destroy up to one target nonland permanent. Its controller mills cards until they mill a nonland permanent card, then puts it onto the battlefield.

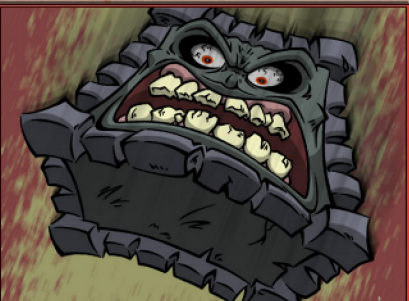
4/3

071/360 R
MAR • EN • GEOPYROLOTHAI ON DEVIANART

By SethBling [Not For Sale]

Thwomp Stomp

2 ♣



Sorcery

Thwomp Stomp deals 6 damage to target creature without flying.
Tromped by the thwomp stomp.

182/360 C
MAR • EN • MASEBREAKER ON DEVIANART

By SethBling [Not For Sale]

Thwimp

2 ♠



Artifact Creature — Golem Minion

Defender, indestructible
*"Thwimps and Thwumps;
Whimps and Whumps;
Grindels and Spindels and Grrrols"
—Song of Invincible Crushers*

1/1

039/360 U
MAR • EN • AARON CLARK

By SethBling [Not For Sale]

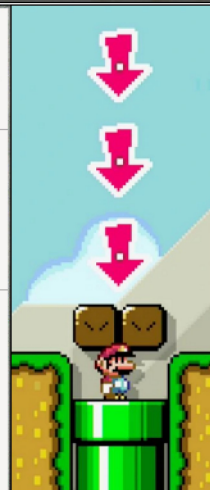
Troll Level

♠

(As this Saga enters and after your draw step, add a lore counter. Sacrifice after IV.)

Exile target creature until Troll Level leaves the battlefield.

I
II
III
IV



Enchantment — Saga

040/360 C
MAR • EN • NINTENDO

By SethBling [Not For Sale]

Para-Goomba

1 ♣



Creature — Fungus Minion

Flash
When Para-Goomba enters the battlefield, it gets +1/+1 and gains flying until end of turn.

2/1

209/360 C
MAR • EN • TDDOG

By SethBling [Not For Sale]

Donkey Kong

2 ♣



Legendary Creature — Ape Berserker

♠, ♣, Sacrifice an artifact or Minion: Donkey Kong deals 2 damage to any target.
Spawn (1, Exile this card from your hand: Create a 1/1 black Minion creature token. You may cast this card later from exile. Spawn only as a sorcery.)

3/1

156/360 R
MAR • EN • SEBASTIANVONBUCHWALD ON DA

By SethBling [Not For Sale]

Culex, Dark Knight of Vanda

2 2 2 2



Legendary Planeswalker — Culex

- 1: Add . When you do, Culex deals 2 damage to any target.
- 1: Add . When you do, untap all creatures you control.
- 1: Add *. When you do, exile target enchantment.
- 1: Add . When you do, scry 1, then draw a card.

246/360 M

MAR • EN FROST-VIXEN ON DEVIANART

By SethBling [Not For Sale]

Mortar



Instant

Destroy target attacking or blocking creature.

Brick



Sorcery

Destroy target artifact or enchantment. Create a Treasure token. (It's an artifact with "C", Sacrifice this artifact: Add one mana of any color.)

246/360 C

MAR • EN JAMES BOYLE

Boo Buddies

1



Creature — Spirit

: Turn Boo Buddies face down.

Spook (You may cast this card face down as a 2/2 creature for 3. When this creature dies while face-down, exile it. You may cast it later from exile for its spook cost.)

2/1

100/360 U

MAR • EN NINTENDO

By SethBling [Not For Sale]

Ghost Ride

2



Artifact — Vehicle

When Ghost Ride enters the battlefield, put a card from your hand or the top card of your library onto the battlefield face down. (It's a 2/2 creature)

Crew 2 (Tap any number of creatures you control with total power 2 or greater: This Vehicle becomes an artifact creature until end of turn.)

3/3

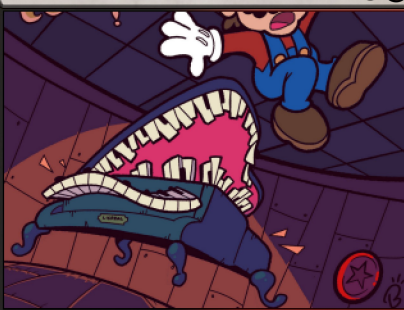
112/360 C

MAR • EN NINTENDO

By SethBling [Not For Sale]

Mad Piano

4



Artifact Creature — Spirit Construct

Menace

Morph 2 , Spook 3 (You may cast this card face down as a 2/2 creature for 3. Turn it face up any time for its morph cost. When it dies while face down, exile it, and you may cast it later from exile for its spook cost.)

6/3

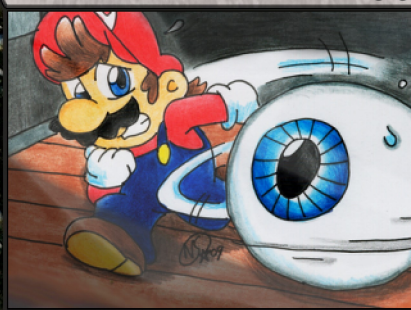
301/360 C

MAR • EN WAFFLEDAGW ON DEVIANART

By SethBling [Not For Sale]

Mr. I

1



Creature — Eye

Whenever Mr. I becomes tapped, scry 1.

I just wants some perspective.

2/2

122/360 C

MAR • EN NATSILVA ON DEVIANART

By SethBling [Not For Sale]

Backwards Long Jump

(As this Saga enters and after your draw step, add a lore counter. Sacrifice after III.)

Enchant creature

I

Enchanted creature doesn't untap during its controller's next untap step.

II

Enchanted creature gains flying until end of turn.

III

Enchanted creature can't be blocked this turn. Whenever it deals damage to an opponent this turn, draw three cards.

Enchantment — Aura Saga

046/360 U

MAR • EN NINTENDO

By SethBling [Not For Sale]

Wrong Castle



Instant

Put target creature that dealt damage to you this turn into its owner's library third from the top.

"Thank you Mario! But our princess is in another castle!"
—Toad

312/360 U

MAR • EN OBYIAN

By SethBling [Not For Sale]

F.L.U.D.D.

1



Enchantment — Aura

Enchant creature

: Enchanted creature gains flying until end of turn.

Whenever enchanted creature attacks, you may pay . When you do, return target nonland permanent with mana value X to its owner's hand.

061/360 U

MAR • EN HAPPYDOODLE ON DEVIANART

By SethBling [Not For Sale]

Right Behind You

1



Instant

Look at the top five cards of your library. Put one of them onto the battlefield face down, and the rest on the bottom of your library in a random order. *(It's a 2/2 creature.)*

"Aren't boos just the worst?!"

081/360 C
MAR • EN BIDOOGOO ON DEVIANART

By SethBling [Not For Sale]

Ghost Story

1



Sorcery

As an additional cost to cast this spell, sacrifice a creature.
Search your library for a card, put it onto the battlefield face down, then shuffle. *(It's a 2/2 creature.)*

113/360 R
MAR • EN TOASTDOODS ON TUMBLR

By SethBling [Not For Sale]

Moo Moo

2



Creature — Ox

Protection from Vehicles *(This creature can't be blocked, targeted, or dealt damage by Vehicles. It can still crew Vehicles.)*

Don't be fooled by their placid smiles. We've lost too many good drivers to their kind.

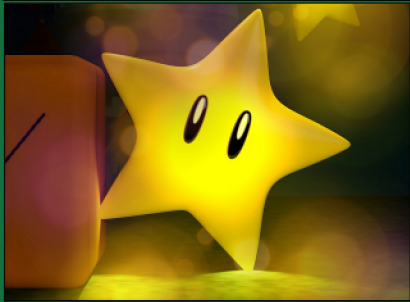
3/3

017/360 C
MAR • EN NINTENDO

By SethBling [Not For Sale]

Super Star

2



Enchantment — Aura

Flash

Enchant creature

Enchanted creature has deathtouch, trample, indestructible, and hexproof.

At the beginning of your upkeep, sacrifice Super Star.

221/360 U
MAR • EN NATAN GENTIL

By SethBling [Not For Sale]

Goomba's Shoe

2



Artifact — Equipment

Equipped creature gets +2/+2 and has reach.

Equip Minion 0

Equip 2

198/360 U
MAR • EN TED ON DEVIANART

By SethBling [Not For Sale]

1-Up

1



Enchantment — Aura

Enchant creature

When 1-Up enters the battlefield, put a +1/+1 counter on enchanted creature.

Enchanted creature has extra hits. *(If damage would be dealt to it while it has a +1/+1 counter on it, remove one instead.)*

294/360 C
MAR • EN AHMED-ART ON DEVIANART

By SethBling [Not For Sale]

Rex

2



Creature — Dinosaur Minion

2 Hits *(This creature enters the battlefield with two +1/+1 counters on it. If damage would be dealt to it while it has a +1/+1 counter on it, remove one instead.)*

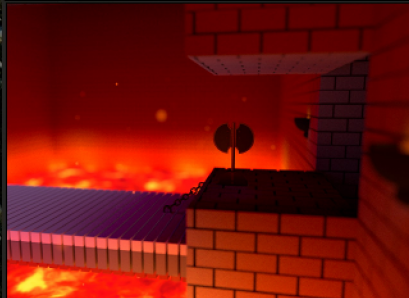
2/0

177/360 C
MAR • EN TOP_DOG ON FURAFFINITY.NET

By SethBling [Not For Sale]

Precarious Footing

1



Enchantment — Aura Curse

Enchant player

Whenever a creature you control deals damage to enchanted player, sacrifice Precarious Footing. When you do, destroy target creature without flying that player controls.

126/360 U
MAR • EN LANCEBERYL ON DEVIANART

By SethBling [Not For Sale]

Kamek's Boon

3



Enchantment — Aura

Enchant creature

Enchanted creature gets +3/+3 and has trample.

Spawn (1, Exile this card from your hand: Create a 1/1 black Minion creature token. You may cast this card later from exile. Spawn only as a sorcery.)

203/360 C
MAR • EN HANS TSENG

By SethBling [Not For Sale]

Princess Peach



Legendary Creature — Human Noble

As long as Princess Peach is enchanted, she gets +1/+1 and has lifelink.

Super (When this creature dies, if it was enchanted, return it to the battlefield under its owner's control.)

1/1

023/360 U
MAR • EN • IZHARDRAWS ON DEVIANART

By SethBling [Not For Sale]

Luigi, Player Two



Legendary Creature — Human Plumber

Reach

Whenever you attack or block with Luigi and exactly one other creature, you may pay 1. If you do, draw a card.

Super (When this creature dies, if it was enchanted, return it to the battlefield under its owner's control.)

3/3

264/360 R
MAR • EN • TISUART ON DEVIANART

By SethBling [Not For Sale]

Slipstream



Instant

If you're in pursuit, draw a card.
(You're in pursuit if an opponent controls more creatures than you.)

Up to one target Vehicle becomes an artifact creature until end of turn. It gets +2/+2 until end of turn.

304/360 C
MAR • EN • FELIPAO4 ON DEVIANART

By SethBling [Not For Sale]

Dash

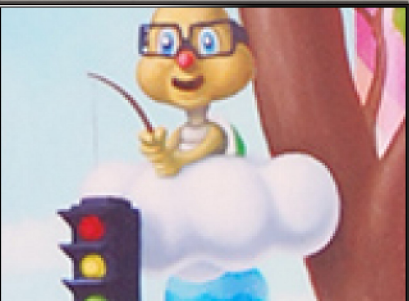


Instant

Target creature gets -2/-2 until end of turn.

By SethBling [Not For Sale]

Traffic Lakitu



Creature — Koopa

Flying

When Traffic Lakitu enters the battlefield, you may return target Vehicle card from your graveyard to the battlefield.

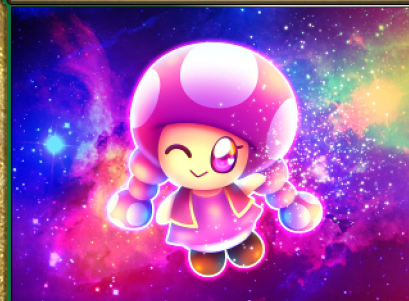
"That'll be two coins, please!"

2/1

307/360 U
MAR • EN • IT8BIT

By SethBling [Not For Sale]

Toadette



Creature — Fungus

Whenever you cast an Aura spell, draw a card.

Super (When this creature dies, if it was enchanted, return it to the battlefield under its owner's control.)

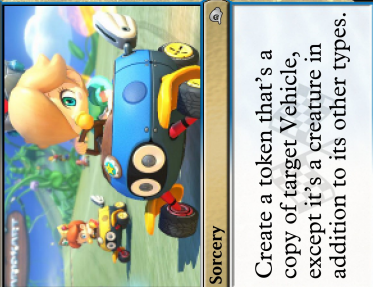
Pink is the new red.

2/2

288/360 R
MAR • EN • INZANATI ON DEVIANART

By SethBling [Not For Sale]

Double



Sorcery

Create a token that's a copy of target Vehicle, except it's a creature in addition to its other types.

By SethBling [Not For Sale]

Goo-Goo Buggy



Artifact — Vehicle

Haste

Crew 1 (Tap any number of creatures you control with total power 1 or greater: This Vehicle becomes an artifact creature until end of turn.)

3/3

321/360 C
MAR • EN • NINTENDO

By SethBling [Not For Sale]

Chain Chomp



Artifact Creature — Construct

Defender

Sacrifice another artifact: Chain Chomp loses defender and gains "This creature attacks each combat if able." (This effect lasts indefinitely.)

3/1

317/360 U
MAR • EN • VINCENTBISSCHOP ON DEVIANART

By SethBling [Not For Sale]

Magma Spray



Instant

Magma Spray deals 2 damage to target creature. If that creature would die this turn, exile it instead.

Mario's one true weakness: lava.

170/360 C
MAR • EN • SOLMATTER ON DEVIANART

By SethBling [Not For Sale]

The Odyssey

3 * 6



Legendary Artifact — Vehicle

Flying

The Odyssey gets +1/+1 for each differently named noncreature permanent you control.

Crew 4 (Tap any number of creatures you control with total power 4 or greater: This Vehicle becomes an artifact creature until end of turn.)

2/2

267/360 R
MAR • EN ZIEGHOST ON DEVIANART

By SethBling [Not For Sale]

Spear

2 6



Artifact — Vehicle

Spear can't be blocked.

Crew 2 (Tap any number of creatures you control with total power 2 or greater: This Vehicle becomes an artifact creature until end of turn.)

4/2

282/360 U
MAR • EN NINTENDO

By SethBling [Not For Sale]

Letter from the Princess

2 2 6 *



Artifact

Mountains are red.

Islands are blue.

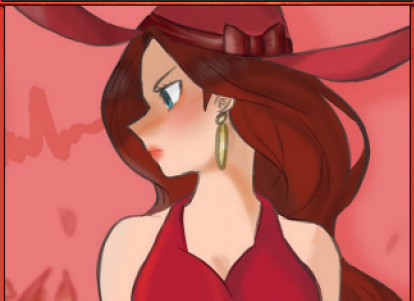
All creatures with super get +2/+2.

263/360 R
MAR • EN NINTENDO

By SethBling [Not For Sale]

Mayor Pauline

2



Legendary Creature — Human Noble

As long as Mayor Pauline is enchanted, she gets +1/+1 and has menace.

Super (When this creature dies, if it was enchanted, return it to the battlefield under its owner's control.)

1/1

171/360 U
MAR • EN ILVERNA ON DEVIANART

By SethBling [Not For Sale]

Enter the Painting

6



Sorcery

Look at the top six cards of your library. You may put a land card from among them onto the battlefield tapped. If you do, each opponent creates a 1/1 black Minion creature token. Put the rest on the bottom of your library in a random order.

190/360 U
MAR • EN SUPERVIDEOGAMELAND ON DEVIANART

By SethBling [Not For Sale]

Pipe Frame

2 *



Artifact — Vehicle

Whenever Pipe Frame attacks or blocks, other Vehicles you control get +2/+2 until end of turn.

Crew 1 (Tap any number of creatures you control with total power 1 or greater: This Vehicle becomes an artifact creature until end of turn.)

3/4

020/360 U
MAR • EN CASSIO YOSHIYAKI SHIBUKAWA

By SethBling [Not For Sale]

Boo Pipes

1 6



Artifact — Vehicle

Whenever Boo Pipes deals combat damage to a player, exile target permanent you control, then return it to the battlefield under its owner's control.

Crew 2 (Tap any number of creatures you control with total power 2 or greater: This Vehicle becomes an artifact creature until end of turn.)

2/5

051/360 U
MAR • EN NINTENDO

By SethBling [Not For Sale]

Ruined Dragon

4 6 2



Legendary Creature — Dragon

Flying

When Ruined Dragon enters the battlefield, you may sacrifice a creature. When you do, destroy target creature or Vehicle.

Spawn (1, Exile this card from your hand: Create a 1/1 black Minion creature token. You may cast this card later from exile. Spawn only as a sorcery.)

3/3

279/360 R
MAR • EN NOLAN192 ON DEVIANART

By SethBling [Not For Sale]

Return Volley

1 6



Instant

Return target spell to its owner's hand.

Draw a card.

"Try-a gain!"

080/360 U
MAR • EN HRRRRRRRRR ON DEVIANART

By SethBling [Not For Sale]

Baby Form

1



Enchantment — Aura

Enchant face-up creature
Enchanted creature loses all abilities and has base power and toughness 1/1.

045/360 C
MAR • EN PALEONA ON DEVIANART

By SethBling [Not For Sale]

Three Balloons

3



Enchantment — Aura

Enchant creature or Vehicle
When Three Balloons enters the battlefield, put three +1/+1 counters on enchanted permanent.
Enchanted permanent has extra hits. (If damage would be dealt to it while it has a +1/+1 counter on it, remove one instead.)

038/360 U
MAR • EN NINTENDO

By SethBling [Not For Sale]

Stack of Goombas

X



Creature — Fungus Minion

X Hits (This creature enters the battlefield with X +1/+1 counters on it. If damage would be dealt to it while it has a +1/+1 counter on it, remove one instead.)

If you can't be smarter than the enemy, at least be taller.

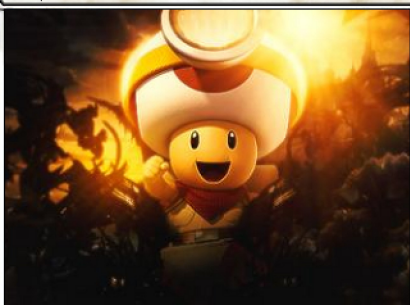
0/0

219/360 C
MAR • EN NINTENDO

By SethBling [Not For Sale]

Captain Toad, Treasure Tracker

3



Legendary Creature — Fungus Scout

When Captain Toad enters the battlefield, if you cast him, choose one —
• Create a Treasure token.
• Return target Aura card from your graveyard to your hand.

Super (When this creature dies, if it was enchanted, return it to the battlefield under its owner's control.)

3/3

003/360 U
MAR • EN AZONIS ON DEVIANART

By SethBling [Not For Sale]

Urgent Possession

3



Sorcery

As an additional cost to cast this spell, sacrifice a face-down or Spirit creature.

Gain control of target creature or Vehicle. It gains haste.

289/360 R
MAR • EN GEEKYTHEMARIOTAKU ON DEVIANART

By SethBling [Not For Sale]

Slammer

1



Creature — Spirit

Whenever you cast this spell from exile or you cast another spell from exile, Slammer deals 2 damage to target opponent.

Spook 1 (You may cast this card face down as a 2/2 creature for 3. When this creature dies while face-down, exile it. You may cast it later from exile for its spook cost.)

2/1

179/360 U
MAR • EN JAMESMANTHEREGENOLD ON DA

By SethBling [Not For Sale]

Spirited Away

1



Sorcery

Destroy target non-Spirit creature.

Spook 1 (You may cast this card face down as a 2/2 creature for 3. When it dies while face-down, exile it. You may cast it later from exile for its spook cost.)

132/360 C
MAR • EN SPICYAVOGATO ON DEVIANART

By SethBling [Not For Sale]

Fishin' Boo

1



Creature — Spirit

Deathtouch, flying

At the beginning of combat on each opponent's turn, up to one target creature attacks this combat if able.

Spook 1 (You may cast this card face down as a 2/2 creature for 3. When this creature dies while face-down, exile it. You may cast it later from exile for its spook cost.)

1/1

251/360 U
MAR • EN SHADYGAMBINO ON DEVIANART

By SethBling [Not For Sale]

Should've Stayed Home

1



Instant

Destroy up to two target creatures that were dealt damage this turn.

Spook 1 (You may cast this card face down as a 2/2 creature for 3. When it dies while face-down, exile it. You may cast it later from exile for its spook cost.)

130/360 U
MAR • EN NINTENDO

By SethBling [Not For Sale]

Shy Boo



Creature — Spirit



Flying

Shy Boo can't attack as long as an opponent controls an untapped creature.

Spook ☠ (You may cast this card face down as a 2/2 creature for 3. When this creature dies while face-down, exile it. You may cast it later from exile for its spook cost.)

2/1

087/360 C
MAR • EN • FIRGOF ON DERPIBOORU

By SethBling [Not For Sale]

Gooigi



Legendary Creature — Ooze Shapeshifter



☹: Gooigi can't be blocked this turn.

☠: Put Gooigi from your graveyard or from exile on top of your library.

🔥: Target player must attack with at least one creature this combat if able.

1: Gooigi gets +1/-1 or -1/+1 until end of turn.

3/3

255/360 M
MAR • EN • NINTENDO

By SethBling [Not For Sale]

Metal Cap



Enchantment — Aura



Enchant creature

Enchanted creature loses flying and can't have or gain flying.

Enchanted creature gets +3/+0 and has hexproof and trample.

266/360 R
MAR • EN • NINTENDO

By SethBling [Not For Sale]

Vanish Cap



Enchantment — Aura



Enchant creature

Enchanted creature has shroud and can't be blocked or deal damage.

1 ☹: Return Vanish Cap to its owner's hand.

092/360 C
MAR • EN • NINTENDO

By SethBling [Not For Sale]

Gobblegut



Creature — Dragon



Flying

When Gobblegut enters the battlefield, you may sacrifice a land. When you do, Gobblegut fights another target creature.

3/3

162/360 U
MAR • EN • NINTENDO

By SethBling [Not For Sale]

King Kaliente



Legendary Creature — Octopus Noble



1 ☠, Sacrifice another creature: King Kaliente deals 2 damage to target player or planeswalker.

Spawn (1, Exile this card from your hand: Create a 1/1 black Minion creature token. You may cast this card later from exile. Spawn only as a sorcery.)

2/6

167/360 R
MAR • EN • SHOGUCHIME ON DEVIANTART

By SethBling [Not For Sale]

Rocky Wrench



Creature — Mole Minion



First strike

If you can dodge a wrench, you can dodge a fireball.

2/1

178/360 C
MAR • EN • DIC ENTERTAINMENT CORPORATION

By SethBling [Not For Sale]

Boo Cloud



Enchantment



When Boo Cloud enters the battlefield, put up to two cards from your hand onto the battlefield face down. (They're 2/2 creatures.)

Face-down and/or Spirit creatures you control get +1/+1.

236/360 R
MAR • EN • ADAM-LEONHARDT ON DEVIANTART

By SethBling [Not For Sale]

Matching Game



Enchantment



When Matching Game enters the battlefield, exile the top six cards of your library face down.

At the beginning of your upkeep, look at a card exiled with Matching Game, then look at another. If the two cards are both colorless or share a color, you may reveal them and put them into your hand.

077/360 R
MAR • EN • NINTENDO

By SethBling [Not For Sale]

Blue Yoshi

2



Enchantment Creature — Dinosaur

Bestow 4 (If you cast this card for its bestow cost, it's an Aura spell with enchant creature. It becomes a creature again if it's not attached to a creature.)

Flying

Enchanted creature gets +2/+2 and has flying.

2/2

049/360 C
MAR • EN Z-GRAVES ON DEVIANART

By SethBling [Not For Sale]

White Yoshi

2



Enchantment Creature — Dinosaur

Bestow 4 (If you cast this card for its bestow cost, it's an Aura spell with enchant creature. It becomes a creature again if it's not attached to a creature.)

First strike

Enchanted creature gets +2/+2 and has first strike.

2/2

044/360 C
MAR • EN THOMAKAZE ON GAMEBANANA

By SethBling [Not For Sale]

Red Yoshi

2



Enchantment Creature — Dinosaur

Bestow 4 (If you cast this card for its bestow cost, it's an Aura spell with enchant creature. It becomes a creature again if it's not attached to a creature.)

1: Red Yoshi gets +2/+0 until end of turn. If it's an Aura, enchanted creature gets +2/+0 until end of turn instead.

Enchanted creature gets +2/+2.

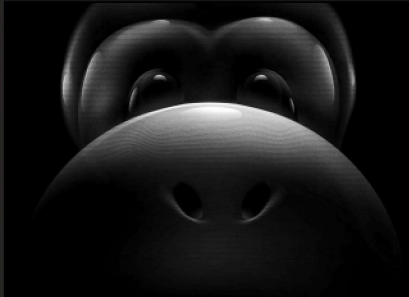
2/2

176/360 C
MAR • EN PARIAXEILWRATH ON DEVIANART

By SethBling [Not For Sale]

Black Yoshi

2



Enchantment Creature — Dinosaur

Bestow 4 (If you cast this card for its bestow cost, it's an Aura spell with enchant creature. It becomes a creature again if it's not attached to a creature.)

Sacrifice a creature: Black Yoshi gets +2/+2 until end of turn. If it's an Aura, enchanted creature gets +2/+2 until end of turn instead.

Enchanted creature gets +2/+2.

2/2

096/360 C
MAR • EN PHILIPPE VALLET

By SethBling [Not For Sale]

Waluigi, Spite Incarnate

2



Legendary Creature — Human Rogue

Whenever an opponent draws a card, you draw a card and you lose 1 life.

"WAH!!"

2/3

290/360 R
MAR • EN PIRATE-CASHOO ON DEVIANART

By SethBling [Not For Sale]

Roy Koopa

2



Legendary Creature — Koopa

Trample

Roy Koopa can't block.

Sacrifice Roy Koopa: Target attacking creature gets +3/+3 and gains trample until end of turn.

3/3

278/360 R
MAR • EN SERACEROST ON DEVIANART

By SethBling [Not For Sale]

Bomb Boo

2



Creature — Spirit

When you sacrifice Bomb Boo, it deals 3 damage to any target.

Spook (You may cast this card face down as a 2/2 creature for 3. When this creature dies while face-down, exile it. You may cast it later from exile for its spook cost.)

3/1

234/360 C
MAR • EN SAMMYSTAR ON COLORSLIVE

By SethBling [Not For Sale]

Hammer Time

1



Instant

Until end of turn, target creature gets +3/+0 and gains trample and "Whenever this creature deals combat damage to a player, destroy target artifact that player controls."

If all you have is a hammer, there isn't a problem you can't smash!

By SethBling [Not For Sale]

164/360 C
MAR • EN @SAMFILSTRUP

Fling

1



Instant

As an additional cost to cast this spell, sacrifice a creature.

Fling deals damage equal to the sacrificed creature's power to any target.

160/360 C
MAR • EN IOEADOK ON DEVIANART

By SethBling [Not For Sale]

Troubling Season



Enchantment

If you would create a 1/1 token, you may instead pay 1 and create two of those tokens.

Double, double, toil and trouble.

224/360 R
MAR • EN LC-HOLY ON DEVIANART

By SethBling [Not For Sale]

Hero's Calling



Sorcery

Look at the top six cards of your library. Reveal up to one Aura card or card with super from among them and put it on top of your library. Put the rest on the bottom in a random order.

Draw a card.

202/360 U
MAR • EN BARRY BLANKENSHIP

By SethBling [Not For Sale]

Search the Grounds



Enchantment

At the beginning of your upkeep, scry 1.

As Luigi crept down each corridor, he couldn't decide which he would be more horrified to find around the next corner: a swarm of greedy and ghoulish ghosts, or the missing brother who had overshadowed him for his entire life.

085/360 C
MAR • EN BUTTERFLYTETO ON DEVIANART

By SethBling [Not For Sale]

Hammer Bros.



Creature — Koopa Minion

First strike, reach

2 Hits (This creature enters the battlefield with two +1/+1 counters on it. If damage would be dealt to it while it has a +1/+1 counter on it, remove one instead.)

0/0

257/360 U
MAR • EN ATTICUS-W ON DEVIANART

By SethBling [Not For Sale]

Boomerang Bro



Creature — Koopa Minion

First strike

Whenever Boomerang Bro becomes untapped, it deals 1 damage to target opponent.

At least a hammer only hits you once.

1/1

146/360 C
MAR • EN NINTENDO

By SethBling [Not For Sale]

Poltergust 3000



Artifact — Equipment

Equipped creature gets +2/+2.

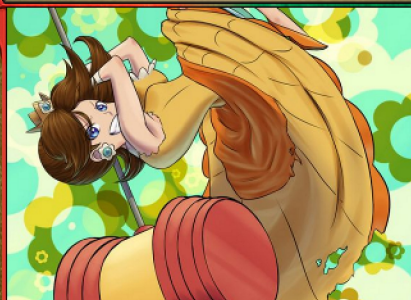
Whenever equipped creature attacks, up to one target creature blocks it this turn if able. If that creature would die this turn, exile it instead.

Equip 3

270/360 U
MAR • EN KNOW-KNAME ON DEVIANART

By SethBling [Not For Sale]

Princess Daisy



Legendary Creature — Human Noble

Whenever an Aura you control becomes attached to Princess Daisy, you may pay 2. When you do, destroy target artifact or enchantment.

Super (When this creature dies, if it was enchanted, return it to the battlefield under its owner's control.)

2/2

271/360 R
MAR • EN OMNIARTS

By SethBling [Not For Sale]

Kamek's Broomstick



Artifact — Vehicle

Flying

Whenever you cast an instant or sorcery spell, you may have Kamek's Broomstick become an artifact creature until end of turn.

Crew 2 (Tap any number of creatures you control with total power 2 or greater: This Vehicle becomes an artifact creature until end of turn.)

3/3

072/360 C
MAR • EN TAYCONOWO ON DEVIANART

By SethBling [Not For Sale]

Fire Bar Roast



Enchantment

At the beginning of each player's upkeep, Fire Bar Roast deals 2 damage to that player.

Round and round it goes!

158/360 U
MAR • EN LOUVI ON DEVIANART

By SethBling [Not For Sale]

King Boo

2 0 0 0 2



Legendary Creature — Spirit Noble

Flying

King Boo gets +2/+2 for each other face-down and/or Spirit creature you control.

Spook 1 (You may cast this card face down as a 2/2 creature for 3. When this creature dies while face-down, exile it. You may cast it later from exile for its spook cost.)

2/2

260/360 R
MAR • EN • ちび太

By SethBling [Not For Sale]

Spiny

2



Creature — Koopa Minion

Whenever a creature deals damage to Spiny, Spiny deals that much damage to that creature's controller.

Through years and years of evolution, nature has produced the absolute pinnacle of things-not-to-step-on.

1/2

180/360 C
MAR • EN • MORTALSHINOBI ON DEVIANART

By SethBling [Not For Sale]

Green Koopa

1



Creature — Koopa Minion

As long as you control another Minion, Green Koopa gets +1/+0 and has trample.

Known capabilities:

- Walking in one direction.

2/2

200/360 C
MAR • EN • KOMOJO ON DEVIANART

By SethBling [Not For Sale]

Red Koopa

1



Creature — Koopa Minion

As long as you control another Minion, Red Koopa gets +1/+0 and has haste.

Known capabilities:

- Walking in one direction.
- Walking in the other direction.

2/2

175/360 C
MAR • EN • NINTENDO

By SethBling [Not For Sale]

Iggy Koopa

1



Legendary Creature — Koopa

Lands enter the battlefield tapped.

Iggy Koopa always looked at the world from a somewhat skewed perspective.

3/3

300/360 R
MAR • EN • C-R-O-F-T ON DEVIANART

By SethBling [Not For Sale]

Pokey

2



Creature — Plant Minion

3 Hits (This creature enters the battlefield with three +1/+1 counters on it. If damage would be dealt to it while it has a +1/+1 counter on it, remove one instead.)

3 *: Put a +1/+1 counter on Pokey.

-1/0

213/360 U
MAR • EN • NINTENDO

By SethBling [Not For Sale]

Explore

1



Sorcery

You may play an additional land this turn.

Draw a card.

"Welcome! This is Dinosaur Land. In this strange land we find that Princess Toadstool is missing again! Looks like Bowser is at it again!"

193/360 C
MAR • EN • ORIOTO ON DEVIANART

By SethBling [Not For Sale]

Item Box

1



Sorcery

Look at the top two cards of your library. Put one of them into your hand and the rest on the bottom of your library in a random order.

If you're in pursuit, look at the top four cards of your library instead of two. (You're in pursuit if an opponent controls more creatures than you.)

070/360 C
MAR • EN • NINTENDO

By SethBling [Not For Sale]

Fake Item Box

1



Sorcery

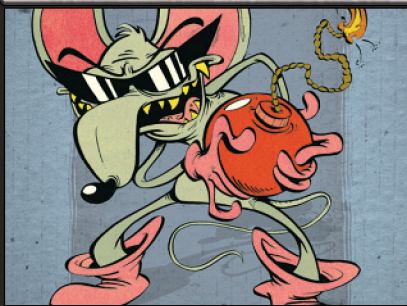
Target player reveals their hand. You choose two nonland cards from among them. That player discards one of the chosen cards.

If you're in pursuit, you choose one card from among them instead of two. (You're in pursuit if an opponent controls more creatures than you.)

110/360 U
MAR • EN • NINTENDO

By SethBling [Not For Sale]

Mouser



Creature — Mouse Minion



2, Sacrifice another permanent: Mouser deals 2 damage to each player.

2, : Create a Treasure token. (It's an artifact with "Sacrifice this artifact: Add one mana of any color.")

1/1

121/360 U
MAR • EN THEMROCK ON DEVIANART

By SethBling [Not For Sale]

Bouldergeist



Creature — Elemental Spirit



Whenever you sacrifice a permanent for the first time each turn, up to one target land you control becomes a 3/3 Elemental creature with haste until end of turn. It's still a land.

Spawn (1, Exile this card from your hand: Create a 1/1 black Minion creature token. You may cast this card later from exile. Spawn only as a sorcery.)

2/4

237/360 R
MAR • EN ISPUDDY ON DEVIANART

By SethBling [Not For Sale]

Ulcerate



Instant



Target creature gets -3/-3 until end of turn. You lose 3 life.

"Becoming giant and looming over your foes is pretty great, yeah? Well, that won't happen if you get this mushroom." —Super Smash Bros.

137/360 C
MAR • EN MIMILUBUG ON DEVIANART

By SethBling [Not For Sale]

Soft Lock



Enchantment — Aura



Flash

Enchant creature or Vehicle

Enchanted creature can't attack or block.

032/360 C
MAR • EN NINTENDO

By SethBling [Not For Sale]

Banzai Bill



Artifact Creature — Construct Minion



Trample, haste

At the beginning of the end step, sacrifice Banzai Bill.

Built single-use for a single purpose.

4/4

140/360 C
MAR • EN WARITSALA ON DEVIANART

By SethBling [Not For Sale]

Death Stare



Sorcery



Target player discards two cards.

If you're in pursuit, that player sacrifices a nontoken creature. (You're in pursuit if an opponent controls more creatures than you.)

106/360 C
MAR • EN THEBOURGYMAN ON DEVIANART

By SethBling [Not For Sale]

Para-Wing



Artifact — Vehicle



*: Para-Wing gains flying until end of turn.

Crew 1 (Tap any number of creatures you control with total power 1 or greater: This Vehicle becomes an artifact creature until end of turn.)

2/3

078/360 C
MAR • EN ZOMBIDI ON DEVIANART

By SethBling [Not For Sale]

Trophy Ceremony



Sorcery



Three target creatures and/or Vehicles each gain lifelink until end of turn. Choose a different mode for each target.

- It also gets +1/+1 until end of turn.
- It also gets +2/+2 until end of turn.
- It also gets +3/+3 until end of turn.

041/360 U
MAR • EN WARELANDER ON WARIOFORUMS

By SethBling [Not For Sale]

Close Call



Instant



If you're in pursuit, draw a card. (You're in pursuit if an opponent controls more creatures than you.)

Choose up to one target creature or Vehicle card in your graveyard that was put there from the battlefield this turn. Return it to the battlefield.

295/360 U
MAR • EN SKLAVENBRUSE ON DEVIANART

By SethBling [Not For Sale]

Drift



Enchantment — Aura



Enchant creature or Vehicle
Whenever enchanted creature attacks, put a +1/+1 counter on it.
When enchanted creature is dealt damage, sacrifice Drift.

006/360 C
MAR • EN INKHANA ON DEVIANART

By SethBling [Not For Sale]

Final Battle



Sorcery



As an additional cost to cast this spell, sacrifice X permanents.
Final Battle can't be countered.
Target creature you control gets +X/+X until end of turn. Then it fights up to one target creature you don't control.

298/360 M
MAR • EN FREE4FIREYOUTUBE ON DEVIANART

By SethBling [Not For Sale]

Earth-Shattering Stomp



Sorcery



Destroy target creature.
Sacrifice a land unless you pay 3.
If there's one thing Bowser loves more than his own castle, it's the feeling of squished plumbers under his feet.

109/360 U
MAR • EN TEASELBONE ON DEVIANART

By SethBling [Not For Sale]

So Long



Instant



Destroy target blocking or blocked creature.

"Thank you so much-a for to playing my game!"
—Mario

031/360 C
MAR • EN KNIGHT-MI ON DEVIANART

By SethBling [Not For Sale]

Remote Driving



Enchantment



Vehicles you control get +1/+1.
1: Target Vehicle you control becomes an artifact creature until end of turn.

Who drives the drivers?

275/360 R
MAR • EN PRINCESS-DAISY ON DEVIANART

By SethBling [Not For Sale]

Tatanga, Alien Invader



Legendary Creature — Alien Pilot



Flying, deathtouch
Whenever Tatanga crews a Vehicle, that Vehicle gains flying and deathtouch until end of turn.
Taking Sarasaland from Princess Daisy was the easy part.

2/1

286/360 R
MAR • EN GRAPIOKAD ON DEVIANART

By SethBling [Not For Sale]

Yoshi Egg



Creature — Dinosaur Egg



Defender
When Yoshi Egg dies, look at the top five cards of your library. You may put a permanent card from among them onto the battlefield. Put the rest on the bottom of your library in a random order.

0/2

229/360 U
MAR • EN ZEFRENCHM ON DEVIANART

By SethBling [Not For Sale]

Bounding Dolphins



Creature — Dolphin



*, ♠: Target attacking creature gains flying until end of turn.

Why swim with the dolphins when you can fly with them?

1/3

052/360 C
MAR • EN TENBE ON DEVIANART

By SethBling [Not For Sale]

Strength in Numbers



Instant



Until end of turn, target creature gains trample and gets +X/+X, where X is the number of attacking creatures.

"What do we want!?" "MARIO!"
"When do we want it!?" "MARIO!"

220/360 C
MAR • EN MKDRAWINGS ON DEVIANART

By SethBling [Not For Sale]

Poochy

1*



Creature — Dog

Sacrifice Poochy: Another target creature you control gains indestructible until end of turn.

A dino's best friend.

2/3

022/360 C
MAR • EN • NEOCYANIA ON DEVIANART

By SethBling [Not For Sale]

Tiny Galaxy



Land

Tiny Galaxy enters the battlefield tapped.

When Tiny Galaxy enters the battlefield, scry 1.

☞: Add * or ♠.

355/360 U
MAR • EN • TESSIBEANS ON DEVIANART

By SethBling [Not For Sale]

Read the Blueprints

1♣♠



Sorcery

Look at the top four cards of your library. For each permanent type, you may reveal a card of that type from among them and put it into your hand. Put the rest on the bottom of your library in a random order.

274/360 R
MAR • EN • NINTENDRAWER ON DEVIANART

By SethBling [Not For Sale]

Lunge Fish

3♣



Creature — Fish

Flash

*One fish,
Two fish,
Red fish,
You squish.*

3/4

075/360 C
MAR • EN • ZOOKIEDRAGON ON DEVIANART

By SethBling [Not For Sale]

Frighten the Plumber

♠☞



Sorcery

Return target creature to its owner's hand, then that player discards a card.

Spook ♠☞ (You may cast this card face down as a 2/2 creature for 3. When it dies while face-down, exile it. You may cast it later from exile for its spook cost.)

253/360 U
MAR • EN • BOXBIRD ON DEVIANART

By SethBling [Not For Sale]

Surprise Party

2☞



Instant

Target creature gets -3/-3 until end of turn.

Spook ☞ (You may cast this card face down as a 2/2 creature for 3. When it dies while face-down, exile it. You may cast it later from exile for its spook cost.)

134/360 C
MAR • EN • SIGA4BDN ON DEVIANART

By SethBling [Not For Sale]

Atop the Battlements

2☞



Enchantment

Whenever a blocking creature dies, it deals 3 damage to its controller.

When Bowser gives you minions, you make minionade.

139/360 U
MAR • EN • JUSTINDEROSA ON DEVIANART

By SethBling [Not For Sale]

Trapped in the Ring

☞



Instant

Trapped in the Ring deals 2 damage to target creature. That creature attacks or blocks this turn if able.

Spook ☞ (You may cast this card face down as a 2/2 creature for 3. When it dies while face-down, exile it. You may cast it later from exile for its spook cost.)

183/360 C
MAR • EN • SRPELO ON DEVIANART

By SethBling [Not For Sale]

Polterpup

1☞



Creature — Dog Spirit

When Polterpup enters the battlefield, exile target artifact until Polterpup leaves the battlefield.

Spook ☞ (You may cast this card face down as a 2/2 creature for 3. When this creature dies while face-down, exile it. You may cast it later from exile for its spook cost.)

2/1

172/360 C
MAR • EN • RED-FLARE ON DEVIANART

By SethBling [Not For Sale]

Finish Line

1



Enchantment

Whenever a Vehicle you control deals combat damage to a player, you may draw a card.

Each crossing brings us both one lap closer to glory and one lap closer to defeat.

062/360 U
MAR • EN NINTENDO

By SethBling [Not For Sale]

Roulette Block

1



Sorcery

Choose artifact or enchantment. Scry 4, then reveal the top card of your library. If it's a card of the chosen type, put it into your hand.

Although at first its contents appear completely random, with enough study, it can be manipulated to your favor.

025/360 C
MAR • EN NINTENDO

By SethBling [Not For Sale]

Peek-a-Boo

1



Instant

Exile target creature. Its owner casts it without paying its mana cost if able.

Shouldn't have looked away.

079/360 U
MAR • EN TEKKI ON ZEROCHAN

By SethBling [Not For Sale]

Collateral Damage

2



Instant

As an additional cost to cast this spell, sacrifice a creature.

Collateral Damage deals 3 damage to any target.

Ah, trusty fire. Always gets the job done, no matter who's standing in the way!

151/360 C
MAR • EN NINTENDO

By SethBling [Not For Sale]

Magma Jet

1



Instant

Magma Jet deals 2 damage to any target.

Scry 2.

A plumber's greatest folly is to believe that he controls the pipes.

169/360 C
MAR • EN SERPERIORRULER101 ON DEVIANTART

By SethBling [Not For Sale]

Blaze

X



Sorcery

Blaze deals X damage to any target.

"Mario! You again! Well that's just fine—I've been looking for something to fry with my fire breath!"
—Bowser, King Koopa

142/360 C
MAR • EN NINTENDO

By SethBling [Not For Sale]

Lemmy Koopa

2



Legendary Creature — Koopa

As long as it's your turn, Minions you control have deathtouch.

Spawn (1, Exile this card from your hand: Create a 1/1 black Minion creature token. You may cast this card later from exile. Spawn only as a sorcery.)

2/3

119/360 U
MAR • EN ARASHI-H ON DEVIANTART

By SethBling [Not For Sale]

Wendy O. Koopa

2



Legendary Creature — Koopa

Whenever Wendy O. Koopa attacks, create two 1/1 black Minion creature tokens that are tapped and attacking.

♣, Sacrifice two Minions: Wendy O. Koopa gains indestructible until end of turn. Tap her.

4/2

292/360 R
MAR • EN PROFESSORFANDANGO ON DEVIANTART

By SethBling [Not For Sale]

Ludwig von Koopa

3



Legendary Creature — Koopa

All creatures attack each combat if able.

Spawn (1, Exile this card from your hand: Create a 1/1 black Minion creature token. You may cast this card later from exile. Spawn only as a sorcery.)

3/3

168/360 R
MAR • EN MRNERDLING ON DEVIANTART

By SethBling [Not For Sale]

Hoverkart

2



Artifact — Vehicle

Hoverkart can't be blocked by artifact creatures.

Crew 3 (Tap any number of creatures you control with total power 3 or greater: This Vehicle becomes an artifact creature until end of turn.)

5/5

012/360 C
MAR • EN CHINCHONGCHA ON DEVIANART

By SethBling [Not For Sale]

Master Cycle

1



Artifact — Vehicle

As long as it's your turn, Master Cycle has first strike.

Crew 1 (Tap any number of creatures you control with total power 1 or greater: This Vehicle becomes an artifact creature until end of turn.)

3/1

015/360 C
MAR • EN SHAMSERG ON DEVIANART

By SethBling [Not For Sale]

Koopa Airship

4



Artifact — Vehicle

Flying, trample

At the beginning of your upkeep, up to one target creature gets -3/-3 until end of turn.

Crew 5 (Tap any number of creatures you control with total power 5 or greater: This Vehicle becomes an artifact creature until end of turn.)

7/10

116/360 R
MAR • EN VIKING011 ON DEVIANART

By SethBling [Not For Sale]

Toad Brigade

2



Creature — Fungus Scout

When Toad Brigade enters the battlefield, create a 2/2 green and white Fungus creature token.

Super (When this creature dies, if it was enchanted, return it to the battlefield under its owner's control.)

2/2

306/360 U
MAR • EN NETERG ON DEVIANART

By SethBling [Not For Sale]

Toadsworth

3



Legendary Creature — Fungus Advisor

Enchanted creatures you control get +1/+1 and have trample.

Super (When this creature dies, if it was enchanted, return it to the battlefield under its owner's control.)

3/3

223/360 U
MAR • EN SHADOWFINDEROFVENUS ON DA

By SethBling [Not For Sale]

Diddy Kong

1



Legendary Creature — Monkey Warrior

As long as it's your turn, Diddy Kong has first strike.

Super (When this creature dies, if it was enchanted, return it to the battlefield under its owner's control.)

2/2

155/360 U
MAR • EN FABIANLEONARDO ON DEVIANART

By SethBling [Not For Sale]

Kat and Ana

2



Legendary Creature — Human Ninja

As long as Kat and Ana is attacking, you may cast Aura spells as though they had flash.

Super (When this creature dies, if it was enchanted, return it to the battlefield under its owner's control.)

3/3

165/360 U
MAR • EN RUENSON ON DEVIANART

By SethBling [Not For Sale]

Big Bertha

4



Creature — Fish

Publish (If there are four or more card types among permanents you control, you're a maker for the rest of the game.)

1: Create a 1/1 blue Fish creature token. Activate only if you're a maker.

5/5

047/360 U
MAR • EN NINTENDO

By SethBling [Not For Sale]

Coursebot

2



Legendary Artifact Creature — Construct

Trample, vigilance

Publish (If there are four or more card types among permanents you control, you're a maker for the rest of the game.)

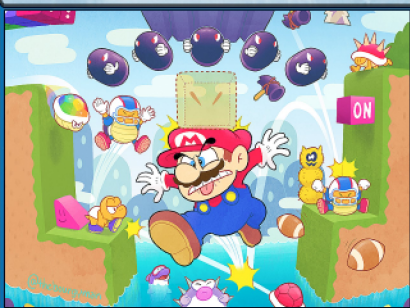
At the beginning of your upkeep, if you're a maker, draw a card and reveal it. Coursebot gets +X/+X until end of turn, where X is that card's mana value.

4/4

244/360 M
MAR • EN NINTENDO

By SethBling [Not For Sale]

Invisible Block



Artifact

Flash

Publish (If there are four or more card types among permanents you control, you're a maker for the rest of the game.)

1, ♣: Up to one target attacking creature doesn't untap during its controller's next untap step. If you're a maker, scry 1.

069/360 U MAR • EN THEBOURGYMAN ON DEVIANART By SethBling [Not For Sale]

Mr. Eraser



Artifact Creature — Construct

Publish (If there are four or more card types among permanents you control, you're a maker for the rest of the game.)

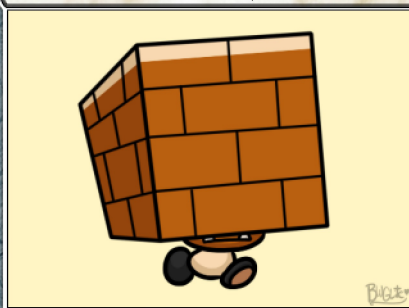
When Mr. Eraser dies, if you're a maker, choose one —

- Exile target enchantment.
- You gain 4 life.

2/1

018/360 U MAR • EN NINTENDO By SethBling [Not For Sale]

Pile Driver Micro-Goomba



Artifact Creature — Fungus Wall Minion

Publish (If there are four or more card types among permanents you control, you're a maker for the rest of the game.)

As long as you're a maker, Pile Driver Micro-Goomba gets +3/+0 and has first strike.

0/2

019/360 C MAR • EN @BWGLITE By SethBling [Not For Sale]

Rising Water



Enchantment

Publish (If there are four or more card types among permanents you control, you're a maker for the rest of the game.)

When Rising Water enters the battlefield, create three 1/1 blue Fish creature tokens.

As long as you're a maker, creatures you control can't be blocked by creatures with greater power.

083/360 U MAR • EN AIKEN GARCIA By SethBling [Not For Sale]

Soundfrog



Creature — Frog Bard

Publish (If there are four or more card types among permanents you control, you're a maker for the rest of the game.)

As long as you're a maker, Soundfrog gets +2/+2 and all creatures able to block it do so.

2/2

218/360 U MAR • EN NINTENDO By SethBling [Not For Sale]

Heavy Troopa



Creature — Koopa Minion

Publish (If there are four or more card types among permanents you control, you're a maker for the rest of the game.)

As long as you're a maker, Heavy Troopa has flying, vigilance, and base power and toughness 4/4.

1/4

258/360 U MAR • EN NINTENDO By SethBling [Not For Sale]

Yamamura, Skilled Creator



Legendary Creature — Bird Advisor

Flying

Publish (If there are four or more card types among permanents you control, you're a maker for the rest of the game.)

Whenever Yamamura deals combat damage to a player, if you're a maker, untap all lands you control.

2/2

293/360 R MAR • EN NINTENDO By SethBling [Not For Sale]

Credits Warp



Instant

Publish (If there are four or more card types among permanents you control, you're a maker for the rest of the game.)

If you're a maker, end the turn. (Exile all spells and abilities from the stack, including this card. The player whose turn it is discards down to their maximum hand size. Damage wears off, and "this turn" and "until end of turn" effects end.)

245/360 M MAR • EN NINTENDO By SethBling [Not For Sale]

World 1-1



Enchantment

Whenever World 1-1 enters the battlefield or you cast a spell with publish, create a 1/1 black Minion creature token and a Treasure token. (It's an artifact with "♣, Sacrifice this artifact: Add one mana of any color.")

311/360 R MAR • EN ULTRAPLUS65 ON DEVIANART By SethBling [Not For Sale]

Casualties of Wart

4 3 2 1



Sorcery

- Choose one or more —
- Destroy target enchantment.
 - Destroy target creature.
 - Destroy target artifact.
 - Destroy target land.
 - Destroy target planeswalker.

242/360 R
MAR • EN MAST3R-RAINBOW ON DEVIANART By SethBling [Not For Sale]

Scare-a-thon

4 3 2 1



Sorcery

All creatures get -4/-4 until end of turn.
Spook 3 (You may cast this card face down as a 2/2 creature for 3. When it dies while face-down, exile it. You may cast it later from exile for its spook cost.)

129/360 R
MAR • EN POKEDSTUDIO ON DEVIANART By SethBling [Not For Sale]

Showdown

2 3 2



Sorcery

Each player chooses a creature they control. Destroy the rest.

The moment you kidnapped the princess, this was inevitable.

029/360 R
MAR • EN LALILULELO2003 ON DEVIANART By SethBling [Not For Sale]

Firebrand

2 2



Enchantment — Aura

Enchant creature
When Firebrand enters the battlefield, it deals 2 damage to any target.
Enchanted creature gets +2/+0.

159/360 C
MAR • EN THELOMBAXSI By SethBling [Not For Sale]

Thunder Hand

1 2



Enchantment — Aura

Flash
Enchant creature
When Thunder Hand enters the battlefield, it deals 3 damage to target blocking creature.
Enchanted creature has trample.

181/360 U
MAR • EN THELOMBAXSI By SethBling [Not For Sale]

Turnip

1



Enchantment — Aura

Enchant creature
Enchanted creature gets +1/+1.
2 : Return Turnip from your graveyard to your hand.

225/360 U
MAR • EN ATHENAWYRM ON DEVIANART By SethBling [Not For Sale]

Mega Mushroom

4 3 2 1



Enchantment — Aura

Enchant creature
Enchanted creature gets +5/+5 and has reach and trample.
Size matters.

205/360 R
MAR • EN RAFAELVENTURA ON DEVIANART By SethBling [Not For Sale]

Honey Queen

3 3 2



Legendary Creature — Insect Noble

Flying
Publish (If there are four or more card types among permanents you control, you're a maker for the rest of the game.)
When Honey Queen enters the battlefield, if you're a maker, you gain 3 life and draw three cards.

3/3

259/360 R
MAR • EN NINTENDO By SethBling [Not For Sale]

Bounty Board

1 3



Artifact

Publish (If there are four or more card types among permanents you control, you're a maker for the rest of the game.)
Whenever a land enters the battlefield under your control, create a Treasure token.
S, Sacrifice two Treasures: Create a 2/2 green and white Fungus creature token.
Activate only if you're a maker.

238/360 U
MAR • EN NINTENDO By SethBling [Not For Sale]

Start Over

3



Sorcery

Choose one or more —

- Return all artifacts to their owners' hands.
- Return all creatures to their owners' hands.
- Return all enchantments to their owners' hands.

*The reset rocket:
Begin again at your task,
complete the level.*

089/360 R
MAR • EN NINTENDO

By SethBling [Not For Sale]

Pianta Villager

1



Creature — Plant Citizen

☞: Add * or .

*"Welcome to the sun-drenched tropical
paradise of Isle Delfino!"*

1/1

211/360 C
MAR • EN KATZTRONAUT ON DEVIANART

By SethBling [Not For Sale]

Pit Crew Toad

*



Creature — Fungus Artificer

As long as you control a Vehicle, Pit Crew Toad gets +2/+0.

"Toad, reporting for duty!"

1/1

021/360 C
MAR • EN NINTENDO

By SethBling [Not For Sale]

Wheelie

1



Sorcery

Whenever target creature or Vehicle deals combat damage to a player this turn, draw two cards.

If you're in pursuit, that permanent gains "This creature can't be blocked" until end of turn. *(You're in pursuit if an opponent controls more creatures than you.)*

093/360 C
MAR • EN NINTENDO

By SethBling [Not For Sale]

Please the Crowd

2*



Sorcery

Target player creates three 0/1 white Spectator creature tokens with "This creature can't block Vehicles."

If you're in pursuit, draw three cards. *(You're in pursuit if an opponent controls more creatures than you.)*

269/360 R
MAR • EN NINTENDO

By SethBling [Not For Sale]

Leave in the Dust

3



Instant

Return target nonland permanent to its owner's hand.

Draw a card.

*"I lost to a bunch of losers!"
—Wario the Trophyless*

074/360 C
MAR • EN JEFFREY 'CHAMBA' CRUZ

By SethBling [Not For Sale]

Proto Piranha

3



Creature — Ooze

1: Target land you control becomes a 1/1 black Minion creature with haste until end of turn. It's still a land.

Spawn (1, *Exile this card from your hand: Create a 1/1 black Minion creature token. You may cast this card later from exile. Spawn only as a sorcery.*)

3/4

127/360 U
MAR • EN NINTENDO

By SethBling [Not For Sale]

Something Wicked

2



Enchantment

At the beginning of your upkeep, look at the top card of your library. You may exile it. For as long as it remains exiled, you may cast it if it has spawn and you may cast it for its spook cost if it has spook.

281/360 R
MAR • EN DAYJOHNSON ON DEVIANART

By SethBling [Not For Sale]

Traffic Slip

*



Instant

Target creature gets -1/-1 until end of turn.

If you're in pursuit, that creature gets -12/-12 until end of turn instead. *(You're in pursuit if an opponent controls more creatures than you.)*

Slip in first and you can end up in last.

136/360 C
MAR • EN MLETH ON DEVIANART

By SethBling [Not For Sale]

Shove Over

2



Instant

Counter target spell unless its controller pays 3.

If you're in pursuit, draw a card.
(You're in pursuit if an opponent controls more creatures than you.)

086/360 U
MAR • EN NINTENDO

By SethBling [Not For Sale]

Turn to Brick

3



Enchantment

When Turn to Brick enters the battlefield, exile another target nonland permanent until Turn to Brick leaves the battlefield.

Sacrifice Turn to Brick: Create a Treasure token. (It's an artifact with "C, Sacrifice this artifact: Add one mana of any color.")

042/360 U
MAR • EN NINTEGA-DARIO ON DEVIANART

By SethBling [Not For Sale]

Weird Mushroom

1



Enchantment — Aura

Enchant creature

Publish (If there are four or more card types among permanents you control, you're a maker for the rest of the game.)

Enchanted creature can't be blocked by creatures with power 2 or less. As long as you're a maker, it gets +2/+2.

226/360 C
MAR • EN CBARTIST

By SethBling [Not For Sale]

Snatch

3



Sorcery

Target opponent discards two cards and you draw two cards.

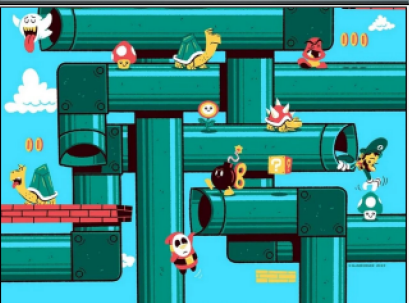
There is no one's plight deemed quite so unfair as the driver whose items have been unjustly misappropriated.

280/360 U
MAR • EN NINTENDO

By SethBling [Not For Sale]

Pipe Network

2



Artifact

2: Create a 1/1 black Minion creature token.

3: Draw a card.

4: Exile another target permanent you control, then return it to the battlefield under its owner's control.

328/360 U
MAR • EN IAN GLAUBINGER

By SethBling [Not For Sale]

Crack the Eggs

1



Sorcery

As an additional cost to cast this spell, discard a card or sacrifice a creature.

Draw two cards.

Anything could be in these eggs; even another Yoshi!

153/360 C
MAR • EN YOSHIFANCLUB

By SethBling [Not For Sale]

Koopa the Quick

2



Legendary Creature — Koopa Scout

Haste

Super (When this creature dies, if it was enchanted, return it to the battlefield under its owner's control.)

"When I say 'Go,' let the race begin!"

4/4

261/360 U
MAR • EN CASSIO YOSHIYAKI SHIBUKAWA

By SethBling [Not For Sale]

Geno, Star Warrior

2



Legendary Creature — Avatar Warrior

Whenever Geno attacks for the first time each turn, untap all enchanted creatures you control. After this phase, there is an additional combat phase.

Super (When this creature dies, if it was enchanted, return it to the battlefield under its owner's control.)

4/4

254/360 R
MAR • EN SCOTTR5680 ON DEVIANART

By SethBling [Not For Sale]

Epic Confrontation

1



Sorcery

Target creature you control gets +1/+2 until end of turn. It fights target creature you don't control.

It will either be a new high score or game over.

191/360 C
MAR • EN GARY STORKAMP ON DEVIANART

By SethBling [Not For Sale]

Grand Star

1



Artifact



When Grand Star enters the battlefield, draw a card.

1, ♣: Add ♠, ♣, or *.

322/360 C
MAR • EN SB7989-ART ON DEVIANART

By SethBling [Not For Sale]

Maker's Stylus

1



Artifact



When Maker's Stylus enters the battlefield, draw a card.

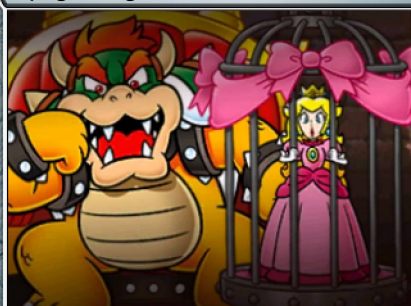
1, ♣: Add ♠, *, or ♣.

326/360 C
MAR • EN CALIDUL ON DEVIANART

By SethBling [Not For Sale]

King's Cage

1



Artifact



When King's Cage enters the battlefield, draw a card.

1, ♣: Add ♠, ♣, or ♣.

324/360 C
MAR • EN NINTENDO

By SethBling [Not For Sale]

Lifelike Painting

1



Artifact



When Lifelike Painting enters the battlefield, draw a card.

1, ♣: Add ♠, ♣, or ♣.

325/360 C
MAR • EN NINTENDO/EDI ON DEVIANART

By SethBling [Not For Sale]

Gold Trophy

1



Artifact



When Gold Trophy enters the battlefield, draw a card.

1, ♣: Add *, ♣, or ♣.

320/360 C
MAR • EN SHADOWSCARKNIGHT ON DEVIANART

By SethBling [Not For Sale]

Sweet Sweet Canyon



Land



Sweet Sweet Canyon enters the battlefield tapped.

♣: Add ♣ or ♣.

Cycling ♣ (♣, Discard this card: Draw a card.)

354/360 U
MAR • EN NINTENDO

By SethBling [Not For Sale]

Lost Pools



Land



Lost Pools enters the battlefield tapped.

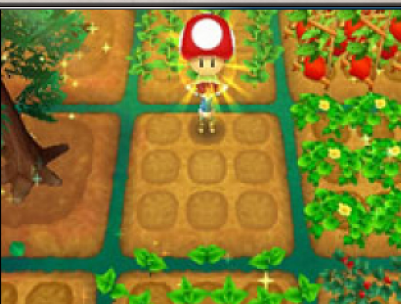
♣: Add ♣ or ♣.

Cycling ♣ (♣, Discard this card: Draw a card.)

346/360 U
MAR • EN NINTENDO

By SethBling [Not For Sale]

Seasonal Farmland



Land



Seasonal Farmland enters the battlefield tapped.

♣: Add * or ♣.

Cycling * (*, Discard this card: Draw a card.)

353/360 U
MAR • EN STORY OF SEASONS

By SethBling [Not For Sale]

Kingdom's Groves



Land



Kingdom's Groves enters the battlefield tapped.

♣: Add ♣ or *.

Cycling ♣ (♣, Discard this card: Draw a card.)

344/360 U
MAR • EN NINTENDO

By SethBling [Not For Sale]

Downslope Thicket



Land

Downslope Thicket enters the battlefield tapped.

☞: Add ♠ or ♣.

Cycling ♣ (♣, Discard this card: Draw a card.)

341/360 U
MAR • EN NINTENDO

By SethBling [Not For Sale]

Heart Coach

3



Artifact — Vehicle

Whenever Heart Coach attacks or blocks, if it was crewed by exactly two creatures this turn, you gain 5 life and draw a card.

Crew 4 (Tap any number of creatures you control with total power 4 or greater: This Vehicle becomes an artifact creature until end of turn.)

5/5

011/360 U
MAR • EN PEACHYPINKPRINCESS ON DEVIANTART By SethBling [Not For Sale]

Biddybuggy

3



Artifact — Vehicle

Deathtouch

Crew 1 (Tap any number of creatures you control with total power 1 or greater: This Vehicle becomes an artifact creature until end of turn.)

2/3

094/360 C
MAR • EN ROTTAC ON DEVIANTART

By SethBling [Not For Sale]

Bone Rattler

3



Artifact — Vehicle

When Bone Rattler enters the battlefield, return target creature or Vehicle card from your graveyard to your hand.

Crew 2 (Tap any number of creatures you control with total power 2 or greater: This Vehicle becomes an artifact creature until end of turn.)

4/4

099/360 C
MAR • EN NINTENDO

By SethBling [Not For Sale]

Super Crown

3



Enchantment — Aura

Enchant creature

Enchanted creature has lifelink and super. (When it dies, if it was enchanted, return it to the battlefield under its owner's control.)

034/360 C
MAR • EN MISSPINKSTRIPES ON DEVIANTART

By SethBling [Not For Sale]

Congested Roadway

3



Instant

Target player creates two 0/1 white Spectator creature tokens with "This creature can't block Vehicles."

Destroy up to one target tapped creature or Vehicle if you're in pursuit. (You're in pursuit if an opponent controls more creatures than you.)

004/360 U
MAR • EN NINTENDO

By SethBling [Not For Sale]

Ukiki

2



Creature — Monkey Rogue

Haste

When Ukiki enters the battlefield, you may attach target Aura or Equipment to it. (Control of that permanent doesn't change.)

"I think it looks better on me than it does on you! Eeeee! Kee keeeee!"

3/2

184/360 U
MAR • EN @BDAARTIST

By SethBling [Not For Sale]

Bottomless Chasm

1



Instant

Each player sacrifices a creature.

Spawn (1, Exile this card from your hand: Create a 1/1 black Minion creature token. You may cast this card later from exile. Spawn only as a sorcery.)

102/360 C
MAR • EN ECSTATIC-ECTSY ON DEVIANTART

By SethBling [Not For Sale]

Bonetail

3



Legendary Creature — Dragon Skeleton

Flying

Sacrifice three creatures: Return Bonetail from your graveyard to the battlefield. Activate only as a sorcery.

Spawn (1, Exile this card from your hand: Create a 1/1 black Minion creature token. You may cast this card later from exile. Spawn only as a sorcery.)

5/2

235/360 R
MAR • EN NINTENDO

By SethBling [Not For Sale]

Draggadon

4 2 2



Creature — Dragon

Flying

2 2: Creatures you control get +1/+0 until end of turn.

Spawn (1, Exile this card from your hand: Create a 1/1 black Minion creature token. You may cast this card later from exile. *Spawn only as a sorcery.*)

5/5

157/360 R
MAR • EN • ISKETCH12 ON TUMBLR

By SethBling [Not For Sale]

Red Boo

2



Creature — Spirit

Red Boo can't block as long as an opponent controls an untapped creature.

Spook (You may cast this card face down as a 2/2 creature for 3. When this creature dies while face-down, exile it. You may cast it later from exile for its spook cost.)

2/1

174/360 C
MAR • EN • SNARKEET ON DEVIANART

By SethBling [Not For Sale]

Bone Goomba

1



Creature — Fungus Minion

When Bone Goomba dies, you draw a card and you lose 1 life.

No one cared what it was until it put on the mask.

2/1

098/360 C
MAR • EN • JOHN IN 3D

By SethBling [Not For Sale]

Boo-lette Wheel

3 2 2



Sorcery

Each player discards their hand, then draws seven cards.

Spook 2 2 (You may cast this card face down as a 2/2 creature for 3. When it dies while face-down, exile it. You may cast it later from exile for its spook cost.)

144/360 R
MAR • EN • YOSELINFRANKCAT ON DEVIANART

By SethBling [Not For Sale]

Meowser

4 2 2



Legendary Creature — Cat Koopa

First strike, trample, haste

Cat-astrophe awaits!

6/6

265/360 R
MAR • EN • IOELCHAN ON DEVIANART

By SethBling [Not For Sale]

Super Bell

2 *



Enchantment — Aura

Enchant creature

Enchanted creature gets +2/+0 and has first strike and haste.

Throwing on a cat costume and prancing around the place? It's more common than you'd think.

284/360 C
MAR • EN • HAYCHEL ON DEVIANART

By SethBling [Not For Sale]

Gushen

4



Creature — Octopus

, Return two lands you control to their owners' hands: Draw two cards.

Don't trust your secrets to Seaside Kingdom.

4/4

065/360 R
MAR • EN • NINTENDO

By SethBling [Not For Sale]

Morton Koopa

3



Legendary Creature — Koopa

When Morton Koopa enters the battlefield, destroy target creature or Vehicle an opponent controls.

"You're history, you've had it, you're done for, it's ALL over, we win, time's up, your clock is cleaned!"

3/3

120/360 U
MAR • EN • TONY FERGUSON

By SethBling [Not For Sale]

Night's Whisper

1



Sorcery

You draw two cards and you lose 2 life.

It can be dangerous to venture out at night. But if the conditions are just right, you can look up and see practically the whole galaxy all at once!

125/360 C
MAR • EN • NAOLITO ON DEVIANART

By SethBling [Not For Sale]

Artistic Obsession

1 0 0 2



Sorcery

Exile a card from your hand, the top card of your library, and a card in your graveyard in a face-down pile. Shuffle that pile and put those cards onto the battlefield face down. *(They're 2/2 creatures. You may look at them at any time.)*

232/360 R
MAR • EN @LUNARYHUES

By SethBling [Not For Sale]

Rev Your Engines

0 0 0 0



Enchantment

1: Target creature gets +1/+0 until end of turn. You can't activate this ability during combat.

If you time it just right, the whole race could be yours.

128/360 U
MAR • EN NINTENDO

By SethBling [Not For Sale]

Muncher Patch

0 0 0 0



Creature — Plant

Defender, deathtouch

They lack the biological functions necessary to digest large prey, yet their hunger for big game is unmatched.

2/1

123/360 C
MAR • EN MK ON PIXIV

By SethBling [Not For Sale]

Ceiling Surprise

2 0 0 0



Instant

Ceiling Surprise deals 3 damage to any target.

Spook (You may cast this card face down as a 2/2 creature for 3. When it dies while face-down, exile it. You may cast it later from exile for its spook cost.)

149/360 C
MAR • EN NINTENDO

By SethBling [Not For Sale]

Super Horn

0 0 0 0



Instant

Target permanent you control gains protection from each of your opponents until end of turn. *(It can't be blocked, targeted, dealt damage, enchanted, or equipped by anything controlled by those players.)*

036/360 C
MAR • EN NINTENDO

By SethBling [Not For Sale]

Throne Room

0 0 0 0



Enchantment

Whenever you cast this spell from exile or you cast another spell from exile, you may pay 1. If you do, you draw a card and you lose 1 life.

Spawn (1, Exile this card from your hand: Create a 1/1 black Minion creature token. You may cast this card later from exile. Spawn only as a sorcery.)

135/360 U
MAR • EN SUPERSHADEMARIO ON DEVIANTART

By SethBling [Not For Sale]

Larry Koopa

2 0 0 0



Legendary Creature — Koopa

Whenever you sacrifice a permanent, Larry Koopa deals 1 damage to any target.

Spawn (1, Exile this card from your hand: Create a 1/1 black Minion creature token. You may cast this card later from exile. Spawn only as a sorcery.)

4/2

262/360 R
MAR • EN METALLICUMBRAGE ON DEVIANTART By SethBling [Not For Sale]

Mechawiggler

3 0 0 0



Artifact Creature — Insect Construct

Trample

Whenever you draw a card, Mechawiggler gets +2/+2 until end of turn.

"I always said we're doomed. Nobody ever listens to me!"
—New Donk City Resident

2/2

204/360 U
MAR • EN BREWSTERKOOPA435 ON DEVIANTART By SethBling [Not For Sale]

Goomboss

2 0 0 0



Legendary Creature — Fungus Noble

When Goomboss enters the battlefield or dies, create a 1/1 black Minion creature token.

Spawn (1, Exile this card from your hand: Create a 1/1 black Minion creature token. You may cast this card later from exile. Spawn only as a sorcery.)

2/2

199/360 U
MAR • EN LOUVI ON DEVIANTART

By SethBling [Not For Sale]

Toad's House

1



Artifact

Publish (If there are four or more card types among permanents you control, you're a maker for the rest of the game.)

As long as you're a maker, creatures you control get +1/+1.

"Hello! You found my shop of strange and wonderful things!" —Toad

222/360 U MAR • EN SAB64 ON DEVIANART By SethBling [Not For Sale]

King Bob-omb

3



Legendary Artifact Creature — Construct

When you sacrifice King Bob-omb, he deals 3 damage to target opponent and you draw three cards.

Spawn (1, Exile this card from your hand: Create a 1/1 black Minion creature token. You may cast this card later from exile. Spawn only as a sorcery.)

3/3

115/360 R MAR • EN MRBFOX ON DEVIANART By SethBling [Not For Sale]

Bob-omb Cannon

1



Artifact

At the beginning of combat on your turn, you may pay 1 and sacrifice a creature. When you do, target creature gets -2/-2 until end of turn.

Where do all the bob-ombs actually come from? No one's lived to find out.

097/360 U MAR • EN NINTENDO By SethBling [Not For Sale]

Gourmet Guy

2



Legendary Creature — Minion

When Gourmet Guy enters the battlefield, you may destroy target artifact or enchantment.

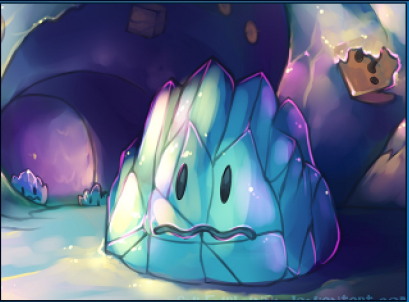
"Where'd you learn to cook, truck driving school?"

2/1

010/360 U MAR • EN SUNSHINEOKA ON DEVIANART By SethBling [Not For Sale]

Freezie

3



Creature — Elemental

Defender

When Freezie enters the battlefield, tap target creature or Vehicle an opponent controls. That permanent doesn't untap during its controller's untap step for as long as you control Freezie.

3/3

063/360 U MAR • EN SULFURBUNNY ON DEVIANART By SethBling [Not For Sale]

Professor E. Gadd

2



Legendary Creature — Human Artificer

1: Look at target face-down creature.

: Destroy target face-down creature. Its controller draws a card.

1/3

272/360 R MAR • EN NINTENDO By SethBling [Not For Sale]

Antasma, Dream Drinker

2



Legendary Creature — Bat Horror

Flash

Flying, lifelink

Each opponent can't draw more than one card each turn.

2/2

230/360 U MAR • EN SQUADAL33 ON DEVIANART By SethBling [Not For Sale]

Justice Toad

1



Creature — Fungus Advisor

Spells your opponents cast from exile cost 1 more to cast.

Super (When this creature dies, if it was enchanted, return it to the battlefield under its owner's control.)

"For Justice!"

2/2

014/360 U MAR • EN NINTENDO By SethBling [Not For Sale]

Capture on Canvas

2



Sorcery

Turn target nonland permanent face down. (It's a 2/2 creature.)

Spook 1 (You may cast this card face down as a 2/2 creature for 3. When it dies while face-down, exile it. You may cast it later from exile for its spook cost.)

054/360 C MAR • EN NINTENDO By SethBling [Not For Sale]

Cataquack



Artifact Creature — Bird Construct

Whenever Cataquack deals combat damage to a player, you may sacrifice it. When you do, destroy target artifact or enchantment that player controls.

3/3

243/360 C MAR • EN INDIGOWILDCAT ON DEVIANART By SethBling [Not For Sale]

Bob-omb



Artifact Creature — Construct Minion

When you sacrifice Bob-omb, choose one —

- Bob-omb deals 3 damage to target creature.
- Destroy target artifact.

2/1

143/360 C MAR • EN HIKARUSHITU ON DEVIANART By SethBling [Not For Sale]

Cosmic Clone



Creature — Shapeshifter

You may have Cosmic Clone enter the battlefield as a copy of any creature on the battlefield or creature card in exile, except its name is Cosmic Clone, and it has haste and “At the beginning of the end step, sacrifice this creature.”

0/0

152/360 R MAR • EN MRBUTCHINSX117 ON GAMEBANANA By SethBling [Not For Sale]

Haunted Chest



Artifact

4, ☞: Draw a card and create a Treasure token. (It's an artifact with “☞, Sacrifice this artifact: Add one mana of any color.”)

Spook ☞ (You may cast this card face down as a 2/2 creature for 3. When it dies while face-down, exile it. You may cast it later from exile for its spook cost.)

066/360 U MAR • EN NINTENDO By SethBling [Not For Sale]

Sidestepper



Creature — Crab

☞: Untap Sidestepper.

What's mad and red and flips right over?

2/1

088/360 C MAR • EN MYSTEREGAMINGYT ON DEVIANART By SethBling [Not For Sale]

Fore!



Sorcery

Choose one —

- Destroy target artifact.
- Destroy target enchantment.
- Destroy target creature with flying.

194/360 C MAR • EN NINTENDO By SethBling [Not For Sale]

Magikoopa's Blast



Instant

Counter target spell unless its controller pays 2. If that spell is countered this way, you create a Treasure token. (It's an artifact with “☞, Sacrifice this artifact: Add one mana of any color.”)

076/360 C MAR • EN ALLENSANCHES ON DEVIANART By SethBling [Not For Sale]

Archivist Toadette



Creature — Fungus Advisor

Whenever Archivist Toadette or another creature enters the battlefield under your control, you gain 1 life.

Super (When this creature dies, if it was enchanted, return it to the battlefield under its owner's control.)

2/2

231/360 U MAR • EN TIGERSONALEX ON TUMBLR By SethBling [Not For Sale]

Prince Peasley



Legendary Creature — Plant Noble

Whenever an Aura becomes attached to Prince Peasley, he fights up to one target creature an opponent controls.

Super (When this creature dies, if it was enchanted, return it to the battlefield under its owner's control.)

3/3

215/360 U MAR • EN STARDROIDIAN ON DEVIANART By SethBling [Not For Sale]

Ghost Writing

2



Sorcery

Draw two cards.

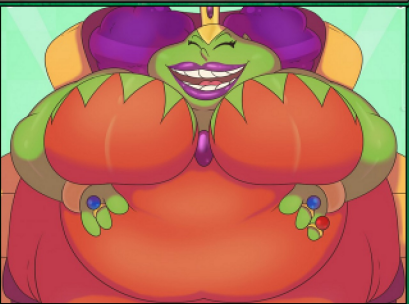
Spook 1 (You may cast this card face down as a 2/2 creature for 3. When it dies while face-down, exile it. You may cast it later from exile for its spook cost.)

064/360 C
MAR • EN • NINTENDO

By SethBling [Not For Sale]

Queen Bean

1



Legendary Creature — Plant Noble

As long as Queen Bean is enchanted, she gets +1/+1 and has trample.

Super (When this creature dies, if it was enchanted, return it to the battlefield under its owner's control.)

1/1

216/360 U
MAR • EN • CRESCENT-BLUE-ZERO

By SethBling [Not For Sale]

Rollodillo Cloak

2



Enchantment — Aura

Enchant creature

Enchanted creature gets +2/+2 and has trample and lifelink.

"Rolling up the galaxy! What a truly noble endeavor!"
—The King of All Cosmos

277/360 U
MAR • EN • NINTENDO

By SethBling [Not For Sale]

Birdley

1



Creature — Bird

Flying, vigilance, lifelink

Dr. Toadley's pet bird fluttered in the lives of Mario and Luigi as an utter nuisance, but grew to become a guiding light and a dear friend.

1/1

002/360 U
MAR • EN • MRBOWZ ON DEVIANART

By SethBling [Not For Sale]

Broozzer

1



Creature — Spirit

Whenever a creature you control with power 2 becomes tapped, target opponent loses 1 life.

Spook 1 (You may cast this card face down as a 2/2 creature for 3. When this creature dies while face-down, exile it. You may cast it later from exile for its spook cost.)

2/1

240/360 U
MAR • EN • RAVINGBOY ON TUMGR

By SethBling [Not For Sale]

Bully

1



Artifact Creature — Construct Minion

2/3

104/360 C
MAR • EN • CHOPPE ON DEVIANART

By SethBling [Not For Sale]

Whomp

2



Artifact Creature — Golem Minion

1/4

332/360 C
MAR • EN • LORENZO MENDOZA

By SethBling [Not For Sale]

Shiverian Racer

1



Creature — Beast Scout

3/1

027/360 C
MAR • EN • TECHNPHHIA ON DEVIANART

By SethBling [Not For Sale]

Boom Boom

2



Creature — Koopa Minion

5/2

145/360 C
MAR • EN • KNIGHT-MI ON DEVIANART

By SethBling [Not For Sale]

Dorrie

3



Creature — Dinosaur



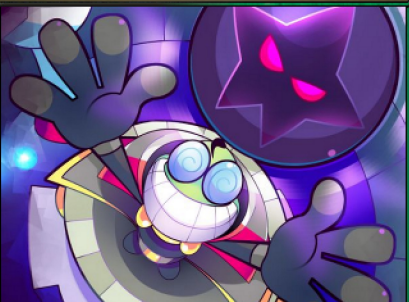
2/7

059/360 C
MAR • EN NINTENDO

By SethBling [Not For Sale]

Fawful, Dark Keeper

3



Legendary Creature — Plant Warlock

Flying

☛: Target creature token has base power and toughness 5/5 until end of turn.

Spawn (1, Exile this card from your hand: Create a 1/1 black Minion creature token. You may cast this card later from exile. Spawn only as a sorcery.)

1/2

250/360 R
MAR • EN NEOCYANIA ON DEVIANTART

By SethBling [Not For Sale]

Hellen Gravely

3



Legendary Creature — Spirit

At the beginning of each player's upkeep, that player sacrifices a nonland permanent.

Spook 3 ☛ (You may cast this card face down as a 2/2 creature for 3. When this creature dies while face-down, exile it. You may cast it later from exile for its spook cost.)

4/4

114/360 R
MAR • EN HANZHENG TANG

By SethBling [Not For Sale]

Colorful Platforms



Enchantment — Aura



Enchant land you control

Publish (If there are four or more card types among permanents you control, you're a maker for the rest of the game.)

Whenever enchanted land is tapped for mana, add * or . If you're a maker, create a Treasure token instead.

189/360 U
MAR • EN PENCIL EQUIPPED ON ARTISTATION

By SethBling [Not For Sale]

Toad Shopkeep

3



Creature — Fungus

When Toad Shopkeep enters the battlefield, create three Treasure tokens. (They're artifacts with "☛, Sacrifice this artifact: Add one mana of any color.")

☛, ☛, Sacrifice a Treasure: Draw a card.

2/2

287/360 R
MAR • EN NINTENDO

By SethBling [Not For Sale]

Starship Mario

2



Artifact — Vehicle



Flying

When Starship Mario enters the battlefield, create two 2/2 green and white Fungus creature tokens.

Crew 4 (Tap any number of creatures you control with total power 4 or greater: This Vehicle becomes an artifact creature until end of turn.)

3/3

033/360 R
MAR • EN NINTENDO

By SethBling [Not For Sale]

I Made This

2



Instant



Publish (If there are four or more card types among permanents you control, you're a maker for the rest of the game.)

Counter target spell. If you're a maker, exile it instead. You may cast that card for as long as it remains exiled, and you may spend mana as though it were mana of any color to cast it.

067/360 R
MAR • EN EMPEROR_PIXEL

By SethBling [Not For Sale]

Sand Trap

2



Sorcery

Choose one —

- Destroy target artifact.
- Destroy target enchantment.
- Destroy target creature with power 4 or greater.

026/360 C
MAR • EN NINTENDO

By SethBling [Not For Sale]

Curve Ball



Instant



Counter target spell unless its controller pays 1.

You may untap a land.

Swing and a miss!

057/360 C
MAR • EN NINTENDO

By SethBling [Not For Sale]

Mii Racer

1



Creature — Human Avatar

Mii Racer gets +1/+1 for each Vehicle you control.

You call it vanity. I call it class.

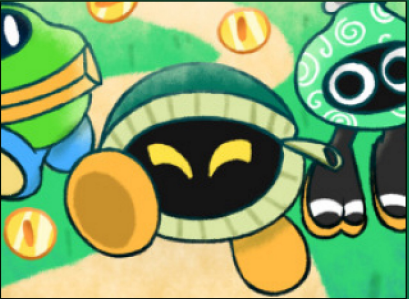
2/2

302/360 U
MAR • EN NINTENDO

By SethBling [Not For Sale]

Moneybag

1



Artifact Creature — Construct Minion

When Moneybag enters the battlefield, create a Treasure token.
(It's an artifact with "☞, Sacrifice this artifact: Add one mana of any color.")

Behold the power of the purse.

1/1

206/360 C
MAR • EN LINKANDDORF ON TUMBLR

By SethBling [Not For Sale]

Coin Coffler

1



Artifact Creature — Construct Minion

*☞☞: Create a Treasure token.
(It's an artifact with "☞, Sacrifice this artifact: Add one mana of any color.")

A dazzling smile and a heart of gold.

2/2

188/360 C
MAR • EN VERTELL ON DEVIANART

By SethBling [Not For Sale]

Mystery Block

1



Artifact — Treasure

☞, Sacrifice Mystery Block: Add one mana of any color.

1, ☞, Sacrifice a Treasure: Draw a card.

208/360 U
MAR • EN DAVIDE PICARDI

By SethBling [Not For Sale]

Endless Challenge

5



Enchantment

Publish (If there are four or more card types among permanents you control, you're a maker for the rest of the game.)

Whenever another permanent is put into your graveyard from the battlefield, if you're a maker, return it to the battlefield at the beginning of the next end step.

007/360 M
MAR • EN NINTENDO

By SethBling [Not For Sale]

Eerie

1



Creature — Dinosaur Spirit

Creature spells you cast with power 2 cost 1 less to cast.

Spook ☞☞ (You may cast this card face down as a 2/2 creature for 3. When this creature dies while face-down, exile it. You may cast it later from exile for its spook cost.)

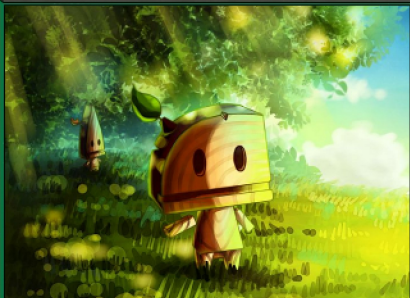
2/3

249/360 U
MAR • EN TUTAN-KOOPA ON DEVIANART

By SethBling [Not For Sale]

Whittle

1



Creature — Treefolk

Vigilance

☞: Add ☞.

"Our people. Brave."

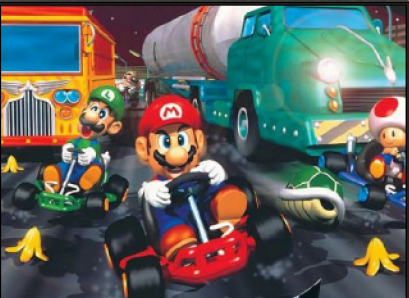
2/2

227/360 C
MAR • EN AEVIANN ON DEVIANART

By SethBling [Not For Sale]

Street Race

1



Enchantment

At the beginning of your upkeep, each opponent creates a 0/1 white Spectator creature token with "This creature can't block Vehicles."

Whenever one or more Vehicles you control attack a player, that player loses 1 life for each Spectator they control.

133/360 R
MAR • EN NINTENDO

By SethBling [Not For Sale]

Daring Demolition

2



Sorcery

Destroy target creature or Vehicle.

A king must know how to delegate work to his subordinates, and a bob-omb only does one kind of work.

105/360 C
MAR • EN NINTEGA DARIO

By SethBling [Not For Sale]

Super Hammer

3



Enchantment — Aura

Enchant creature

Enchanted creature gets +2/+2 and has vigilance.

Enchanted creature has “X, ♣: Return target artifact card with mana value X from your graveyard to the battlefield.”

035/360 U
MAR • EN SAB64 ON DEVIANART

By SethBling [Not For Sale]

Petey Piranha

2



Legendary Creature — Plant

3 Hits (This creature enters the battlefield with three +1/+1 counters on it. If damage would be dealt to it while it has a +1/+1 counter on it, remove one instead.)

Petey Piranha gets +1/+1 for each counter on him.

0/0

210/360 R
MAR • EN BLARGEN69 ON DEVIANART

By SethBling [Not For Sale]

Bowser Jr.

1



Legendary Creature — Koopa

Whenever Bowser Jr. becomes tapped, target creature an opponent controls gets -1/-1 until end of turn.

“Don’t you know when to quit?! I’m gonna enjoy taking you out from the cozy confines of my robot cockpit!”

2/1

103/360 U
MAR • EN MRTHECOOLDUDE ON DEVIANART

By SethBling [Not For Sale]

Warp Whistle

4



Artifact

X X X X, ♣, Sacrifice Warp Whistle: Take X extra turns after this one.

You cheated not only the game, but yourself.

331/360 M
MAR • EN COLLEGEHUMOR

By SethBling [Not For Sale]

Count Bleck

2



Legendary Planeswalker — Bleck

At the beginning of each end step, if a creature died this turn, scry 1.

+1: Create a 1/1 black Minion creature token.

-6: Destroy all creatures.

4

296/360 R
MAR • EN DI-MIKA ON DEVIANART

By SethBling [Not For Sale]

Super Team

7



Artifact Creature — Construct

When Super Team enters the battlefield, create four Treasure tokens. (They’re artifacts with “♣, Sacrifice this artifact: Add one mana of any color.”)

Treasures you control are 1/1 creatures with haste in addition to their other types.

4/7

330/360 R
MAR • EN NINTENDO

By SethBling [Not For Sale]

Hungry Luma

2



Creature — Elemental

Flying

When Hungry Luma enters the battlefield, you may put target face-up exiled card into its owner’s graveyard.

Lumas will consume just about anything when they’re hungry.

3/1

013/360 U
MAR • EN LEMIACRESCENT ON DEVIANART

By SethBling [Not For Sale]

The Duke

1



Artifact — Vehicle

Menace

Crew 2 (Tap any number of creatures you control with total power 2 or greater: This Vehicle becomes an artifact creature until end of turn.)

4/3

248/360 C
MAR • EN PANCAKESANDHALIBUT ON DEVIANART

By SethBling [Not For Sale]

Gold Standard

1



Artifact — Vehicle

Whenever Gold Standard attacks or blocks, create a Treasure token. (It’s an artifact with “♣, Sacrifice this artifact: Add one mana of any color.”)

Crew 1 (Tap any number of creatures you control with total power 1 or greater: This Vehicle becomes an artifact creature until end of turn.)

2/3

009/360 C
MAR • EN NINTENDO

By SethBling [Not For Sale]

Flame Flyer

1



Artifact — Vehicle

Whenever a creature dies, if a Vehicle you control dealt damage to it this turn, draw a card.

Crew 2 (Tap any number of creatures you control with total power 2 or greater: This Vehicle becomes an artifact creature until end of turn.)

4/2

111/360 R
MAR • EN • MASA

By SethBling [Not For Sale]

Cheep Charger

1



Artifact — Vehicle

Whenever Cheep Charger or another Vehicle enters the battlefield under your control, you may create a 1/1 blue Fish creature token.

Crew 1 (Tap any number of creatures you control with total power 1 or greater: This Vehicle becomes an artifact creature until end of turn.)

2/2

055/360 U
MAR • EN • NINTENDO

By SethBling [Not For Sale]

Steel Driver

1



Artifact — Vehicle

Vehicles you control can't be blocked by creatures with greater power.

Crew 1 (Tap any number of creatures you control with total power 1 or greater: This Vehicle becomes an artifact creature until end of turn.)

1/4

090/360 U
MAR • EN • NINTENDO

By SethBling [Not For Sale]

Shrink Lightning

2



Sorcery

If you're in pursuit, you may cast this spell as though it had flash. (You're in pursuit if an opponent controls more creatures than you.)

Destroy all 1/1 creatures. All other creatures have base power and toughness 1/1 until end of turn.

030/360 R
MAR • EN • NINTENDO

By SethBling [Not For Sale]

Star World

5



Enchantment

This spell costs 1 less to cast for each card type among permanents you control.

You may cast permanent spells as though they had flash.

Untap all lands you control during each other player's untap step.

283/360 R
MAR • EN • VERONICA FISH

By SethBling [Not For Sale]

Shroom Grocery

2



Enchantment

*, Sacrifice an enchantment or two Treasures: Return target enchantment card from your graveyard to your hand.

"That Toad runs this shop. He buys, sells and checks items."
—Goombario

303/360 U
MAR • EN • NINTENDO

By SethBling [Not For Sale]

Puzzle Level

2



Enchantment

At the beginning of your upkeep, if you control a Minion token, a Vehicle, a creature with super, a face-down creature, and you're a maker, you win the game. (This ability doesn't make you a maker.)

Level Code: 34BB-0000-01C4-4CF8

273/360 M
MAR • EN • NINTENDO & SEANHIP2

By SethBling [Not For Sale]

Shooting Star

2



Artifact — Vehicle

When Shooting Star enters or leaves the battlefield, create a 1/1 white Elemental creature token with flying.

Crew 1 (Tap any number of creatures you control with total power 1 or greater: This Vehicle becomes an artifact creature until end of turn.)

3/2

028/360 C
MAR • EN • NINTENDO

By SethBling [Not For Sale]

Bubble

1



Enchantment

Flash

When Bubble enters the battlefield, you may exile another target permanent you own, then return it to the battlefield under your control.

You have hexproof.

241/360 U
MAR • EN • NINTENDO

By SethBling [Not For Sale]

Tweester Trickery



Instant



Exile target nonland permanent. Return that card to the battlefield under its owner's control at the beginning of the next end step.

The winds in the desert have a mind of their own.

309/360 C
MAR • EN • ISPARROW ON DEVIANART

By SethBling [Not For Sale]

Top Secret Area



Legendary Land



When Top Secret Area enters the battlefield, look at the top five cards of your library. Reveal up to one Aura card or card with super from among them and put it on top of your library and the rest on the bottom in a random order.

☞: Add ♣.

356/360 U
MAR • EN • SYLVAIN SARRAILH

By SethBling [Not For Sale]

Bumper



Artifact



When Bumper enters the battlefield, return another target permanent you control to its owner's hand.

1 ♠: Return Bumper to its owner's hand.

BOIOIOING!!!!

053/360 C
MAR • EN • NINTENDO

By SethBling [Not For Sale]

Bowser's Castle



Legendary Land



When Bowser's Castle enters the battlefield, look at the top five cards of your library. Reveal up to one card with spawn from among them and put it on top of your library and the rest on the bottom in a random order.

☞: Add ♠.

336/360 U
MAR • EN • RYAN SHIU

By SethBling [Not For Sale]

Big Boo's Haunt



Legendary Land



When Big Boo's Haunt enters the battlefield, look at the top five cards of your library. Reveal up to one card with spook from among them and put it on top of your library and the rest on the bottom in a random order.

☞: Add ♣.

355/360 U
MAR • EN • NINTENDO

By SethBling [Not For Sale]

Yoshi Circuit



Legendary Land



When Yoshi Circuit enters the battlefield, look at the top five cards of your library. Reveal up to one Vehicle card from among them and put it on top of your library and the rest on the bottom in a random order.

☞: Add ♠.

359/360 U
MAR • EN • THRANEK ON STEAM WORKSHOP

By SethBling [Not For Sale]

Nintendo Headquarters



Legendary Land



When Nintendo Headquarters enters the battlefield, look at the top five cards of your library. Reveal up to one card with publish from among them and put it on top of your library and the rest on the bottom in a random order.

☞: Add ♠.

350/360 U
MAR • EN • XANDAY

By SethBling [Not For Sale]

Dash Pepper



Enchantment — Aura



Enchant creature

Enchanted creature gets +2/+0 and has haste.

Hothothothothothothothothot!!

154/360 C
MAR • EN • HUGO-H2P ON DEVIANART

By SethBling [Not For Sale]

Grand Prix



(As this Saga enters and after your draw step, add a lore counter. Sacrifice after III.)

I

You may put a Vehicle card from your hand onto the battlefield. It gains haste until end of turn.

II

Any number of target Vehicles become artifact creatures until end of turn.

III

Create three Treasure tokens. (They're artifacts with "☞, Sacrifice this artifact: Add one mana of any color.")

Enchantment — Saga



256/360 R
MAR • EN • NINTENDO

By SethBling [Not For Sale]

Star of the Party

2



Artifact

At the beginning of your upkeep, draw a card.

2 : Gain control of Star of the Party. Any player may activate this ability but only as a sorcery.

329/360 U
MAR • EN THECITIVERSE ON DEVIANART

By SethBling [Not For Sale]

Double Team

1



Enchantment — Aura

Enchant creature

Whenever enchanted creature attacks, up to two target creatures each get +1/+1 and gain deathtouch until end of turn.

Spawn (1, Exile this card from your hand: Create a 1/1 black Minion creature token. You may cast this card later from exile. Spawn only as a sorcery.)

297/360 C
MAR • EN NINTENDO

By SethBling [Not For Sale]

Prehistoric Tyrant

3



Creature — Dinosaur

Trample

Prehistoric Tyrant can't attack or block unless you control another creature with power 3 or greater.

Giant teeth, tiny brain.

6/6

214/360 C
MAR • EN VANTASY ON DEVIANART

By SethBling [Not For Sale]

Mega Mole

2



Creature — Mole

4/4

016/360 C
MAR • EN SUPEREDCO ON DEVIANART

By SethBling [Not For Sale]

All That Glitters

1



Enchantment — Aura

Enchant creature

Enchanted creature gets +1/+1 for each artifact and/or enchantment you control.

Happiness is a hundred coins.

001/360 C
MAR • EN NINTENDO

By SethBling [Not For Sale]

Aim High

1



Instant

Untap target creature. It gets +2/+2 and gains reach until end of turn.

"Yoshi!"
—Yoshi

186/360 C
MAR • EN NINTENDO

By SethBling [Not For Sale]

Uncaged Fury

2



Instant

Target creature gets +1/+1 and gains double strike until end of turn.

"BWAHAHAHA! You finally made it! Just in time for me to stomp you into space bits!"
—Bowser, King Koopa

185/360 C
MAR • EN WALKINGMELONSAAA ON DEVIANART

By SethBling [Not For Sale]

Boss Rush

3



Sorcery

Creatures you control get +2/+0 and gain haste until end of turn.

Spawn (1, Exile this card from your hand: Create a 1/1 black Minion creature token. You may cast this card later from exile. Spawn only as a sorcery.)

147/360 C
MAR • EN FAYNSTER ON DEVIANART

By SethBling [Not For Sale]

Exclude

2



Instant

Counter target creature spell. Draw a card.

Left behind by the princess on the moon, he had ample time to consider whether he'd been chasing an unattainable goal, an unrequited love. He decided no.

060/360 C
MAR • EN NINTENDO

By SethBling [Not For Sale]

Shroob



Creature — Alien Minion

Shroob can't block.

"One day, the shroobs will dance on the buried remains of this pathetic kingdom!"

—Elder Shroob Princess

2/1

131/360 C
MAR • EN NINTENDO

By SethBling [Not For Sale]

Nabbit



Creature — Rabbit Rogue

When Nabbit enters the battlefield, target opponent discards a card.

The self-proclaimed greatest thief in the Mushroom Kingdom.

2/2

124/360 C
MAR • EN TIMMYPIRANHA ON DEVIANART

By SethBling [Not For Sale]

Birdo



Creature — Dinosaur Warrior

Whenever Birdo attacks, you may pay 1. If you do, it deals damage equal to its power to the player or planeswalker it's attacking.

Super (When this creature dies, if it was enchanted, return it to the battlefield under its owner's control.)

1/1

141/360 U
MAR • EN ROY'S SPORTS HALL

By SethBling [Not For Sale]

Double Cherry



Enchantment — Aura

Enchant creature

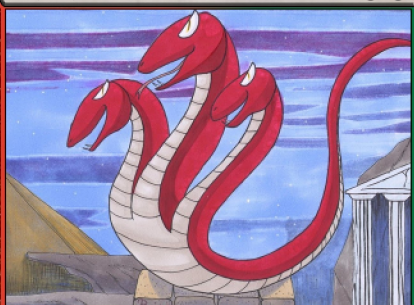
Enchanted creature has double strike and can block an additional creature each combat.

Double the treasure; double the run!

247/360 U
MAR • EN BOXBIRD ON DEVIANART

By SethBling [Not For Sale]

Tryclyde



Creature — Hydra

3 Hits (This creature enters the battlefield with three +1/+1 counters on it. If damage would be dealt to it while it has a +1/+1 counter on it, remove one instead.)

2 red, 2 blue, 2 blue: Tryclyde fights target creature you don't control.

0/0

308/360 U
MAR • EN ETHTHEGUY

By SethBling [Not For Sale]

Galoomba



Creature — Fungus Minion

3/2

196/360 C
MAR • EN KITTYNINIAFISH ON DEVIANART

By SethBling [Not For Sale]

Ice-Blue



Artifact — Vehicle

Whenever Ice-Blue enters the battlefield or attacks, tap any number of target creatures with total power 2 or less. They don't untap during their controllers' next untap step.

Crew 2 (Tap any number of creatures you control with total power 2 or greater: This Vehicle becomes an artifact creature until end of turn.)

6/6

068/360 R
MAR • EN NINTENDO

By SethBling [Not For Sale]

Kingfin



Legendary Creature — Skeleton Shark

When Kingfin enters the battlefield, create two 1/1 blue Fish creature tokens.

Fish you control get +1/+1.

Spook 4 blue (You may cast this card face down as a 2/2 creature for 3. When this creature dies while face-down, exile it. You may cast it later from exile for its spook cost.)

3/3

073/360 R
MAR • EN MOTHERGARCHOMP622

By SethBling [Not For Sale]

Wart the Slippery



Legendary Creature — Frog Noble

Hexproof

He is the most mischievous of all in the world of dreams.

4/3

310/360 U
MAR • EN MAST3R-RAINBOW ON DEVIANART

By SethBling [Not For Sale]